

FLOOR PLAN LEGEND

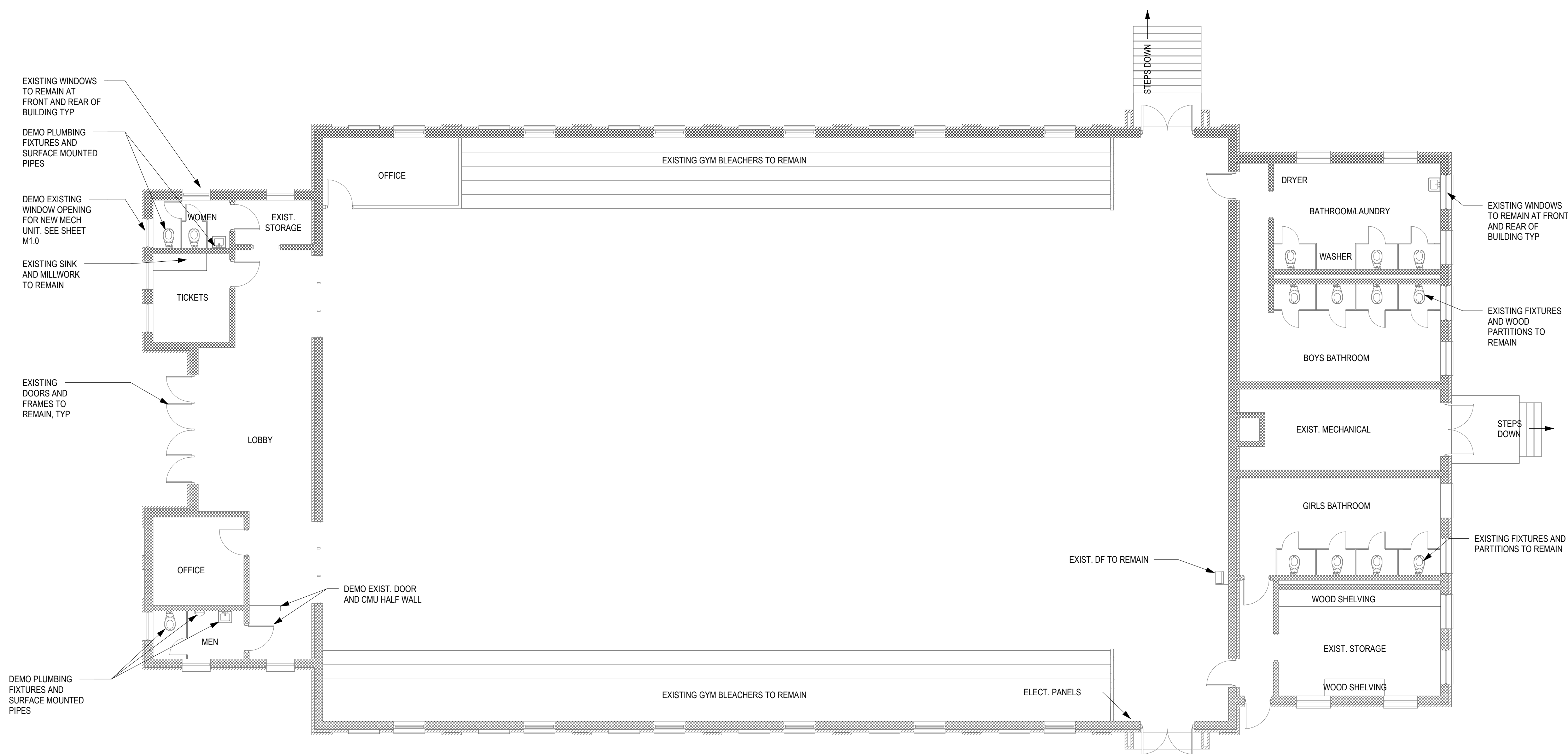
SYMBOL	DESCRIPTION
W2	STOREFRONT (CW WALL) TAG - SEE SHEET A401 AND FLOOR PLANS
	WINDOW TAG - SEE SHEET A401 AND FLOOR PLANS

GENERAL NOTES:

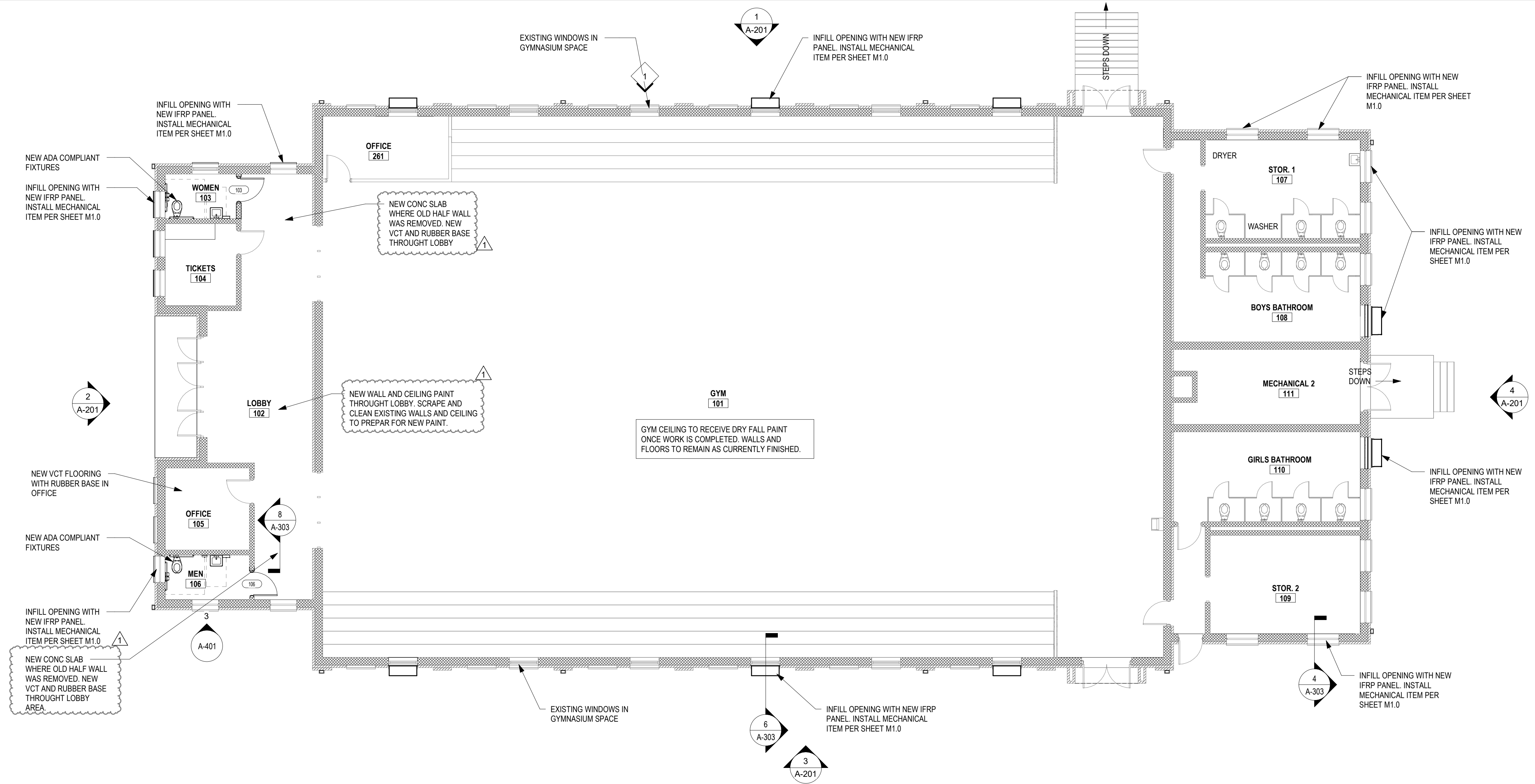
1. ALL CURTAINWALL (CW) AND STOREFRONT (SF) DIMENSIONED TO FACE OF MULLION, UNO.
2. ALL EXTERIOR MASONRY DIMENSIONED TO EXTERIOR FACE OF BRICK VENEER (IF APPLICABLE); IF NO VENEER, TO EXTERIOR FACE OF CMU, UNO.
3. ALL DOORS IN MASONRY DIMENSIONED TO MASONRY OPENING.
4. ALL END WALLS, EXTERIOR CORNERS AND PLASTERS TO RECEIVE BULLNOSE CMU BLOCK.

RENOVATION NOTES:

1. CONTRACTOR IS TO FIELD VERIFY ALL EXISTING CONDITIONS PRIOR TO CONSTRUCTION COMMENCEMENT. CONTRACTOR TO NOTIFY SFL+A SHOULD CONDITIONS DIFFER FROM WHAT IS DRAWN.
2. CONTRACTOR SHALL COORDINATE ALL DEMOLITION WORK WITH THE OWNER PRIOR TO THE START OF WORK.
3. CONTRACTOR SHALL NOTIFY THE OWNER IN ADVANCE OF ANY INTERRUPTION IN UTILITY SERVICES NECESSARY TO COMPLETE THE WORK.
4. ALL DEMOLITION WORK SHALL BE PERFORMED DURING TIMES APPROVED BY AND ACCEPTABLE TO THE OWNER. CONTRACTOR SHALL MAKE EVERY EFFORT TO MINIMIZE NOISE AND CONTROL DUST/DEBRIS MIGRATION SO AS TO AVOID DISTURBANCES TO SCHOOL ACTIVITIES, AS MUCH AS POSSIBLE FOR THE DURATION OF THE WORK.
5. ALL ITEMS WHICH ARE EXISTING AND TO REMAIN SHALL BE PROTECTED FOR THE DURATION OF THE WORK. CONTRACTOR SHALL REPAIR ANY DAMAGE TO EXISTING ITEMS CAUSED BY THE WORK TO LIKE NEW CONDITION AT NO COST TO THE OWNER.
6. ITEMS NOTED TO BE REMOVED SHALL BE REMOVED IN THEIR ENTIRETY, UNO ON THE DRAWINGS. THIS INCLUDES, BUT IS NOT LIMITED TO, ALL SUPPORTS, FASTENERS, FINISHES, TRACKS, TRANSITIONS, ETC. CONTRACTOR SHALL PATCH AND REPAIR SUBSTRATES AS NECESSARY TO RECEIVE NEW FINISHES.
7. PATCH ALL DISTURBED AREAS TO MATCH EXISTING.
8. EXTEND EXISTING UTILITIES AS REQUIRED.
9. ALIGN ALL NEW FINISHED FLOORS, CEILINGS, WALLS, SOFFITS AND ROOFS WITH EXISTING AS NECESSARY.
10. ALL WALLS NOT NOTED ARE EXISTING AND TO REMAIN.



1 FLOOR PLAN - DEMOLITION
SCALE: 1/8" = 1'-0"



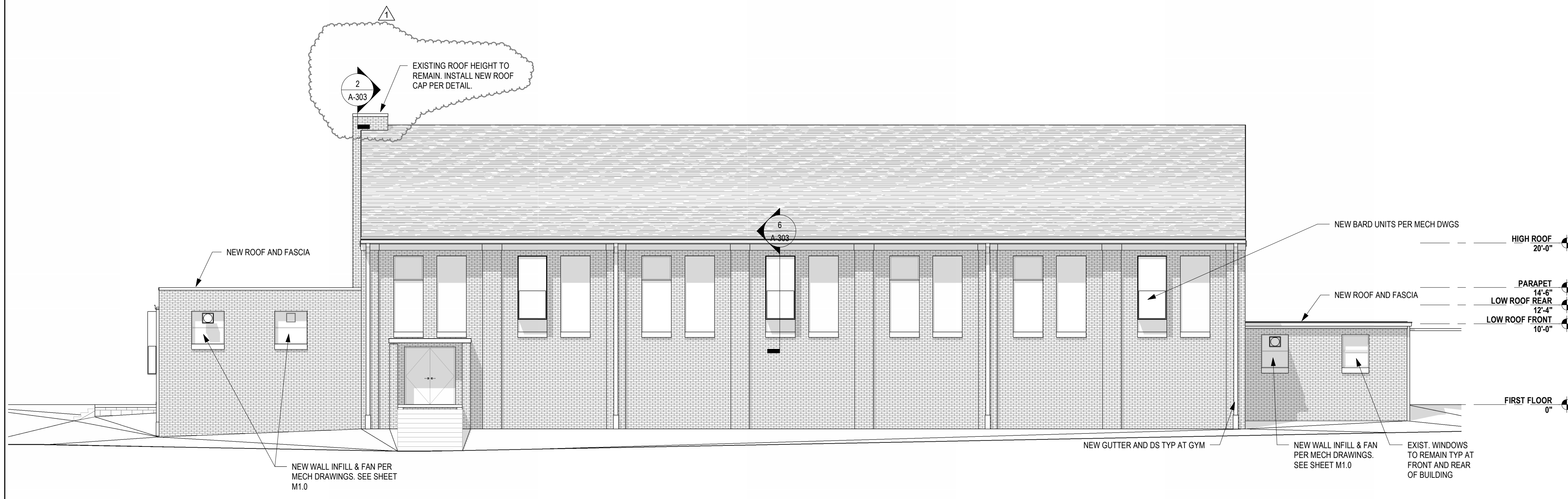
2 FLOOR PLAN - RENOVATED
SCALE: 1/8" = 1'-0"

MOORE COUNTY SCHOOLS
SANDHILLS GYMNASIUM RENO.
2201 FARM LIFE SCHOOL RD., CARTHAGE NC 28327

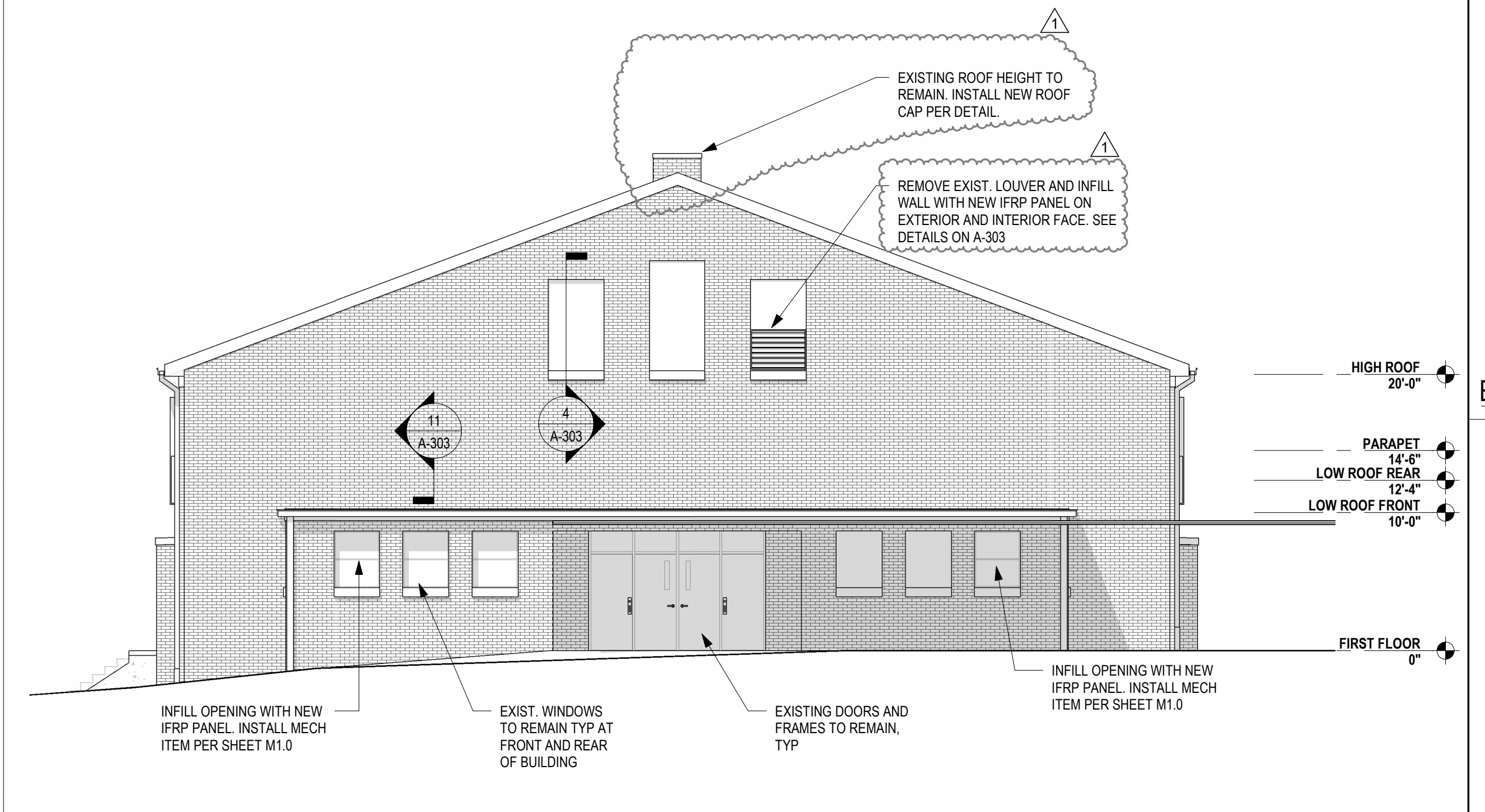
No.	Date	Description
1	12-18-23	ADDENDUM 1

ISSUE DATE: 11/22/23
PROJECT #: 02206.100
DRAWN BY: JK
CHECKED BY: -
© 2023 SFL+a Architects, PA
All Rights Reserved

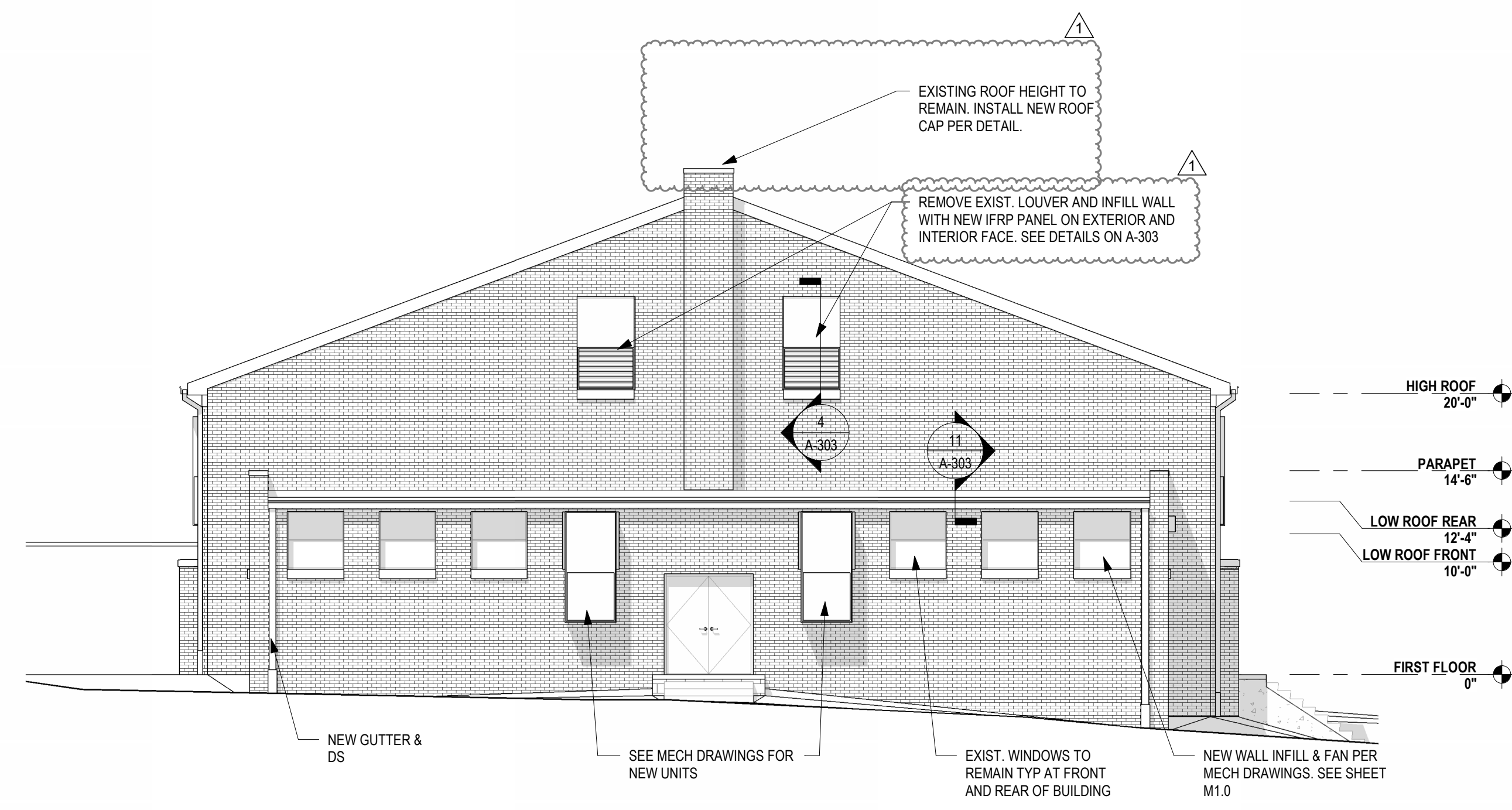
FLOOR PLAN



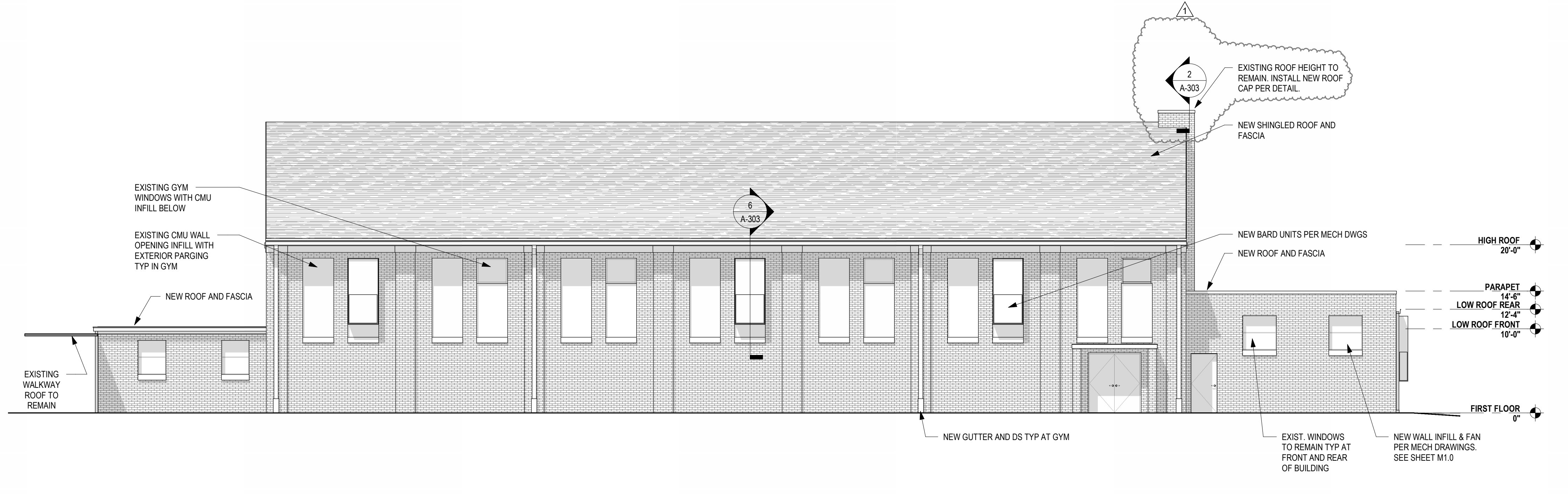
1 NORTH ELEVATION
SCALE: 1/8" = 1'-0"



2 WEST ELEVATION
SCALE: 1/8" = 1'-0"



4 EAST ELEVATION
SCALE: 1/8" = 1'-0"



3 SOUTH ELEVATION
SCALE: 1/8" = 1'-0"

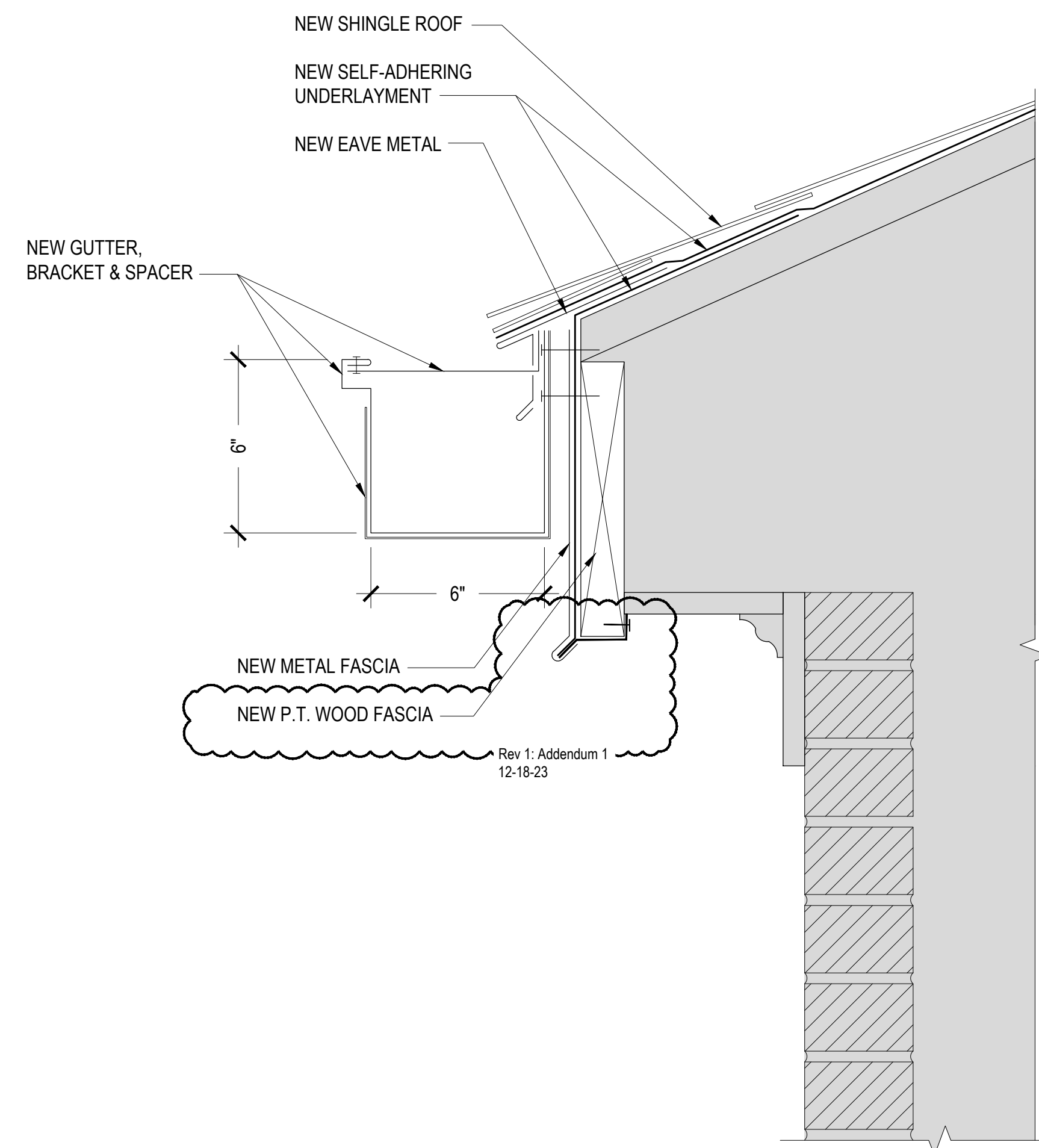
BID SET

MOORE COUNTY SCHOOLS
SANDHILLS GYMNASIUM RENO.
2201 FARM LIFE SCHOOL RD., CARTHAGE NC 28327

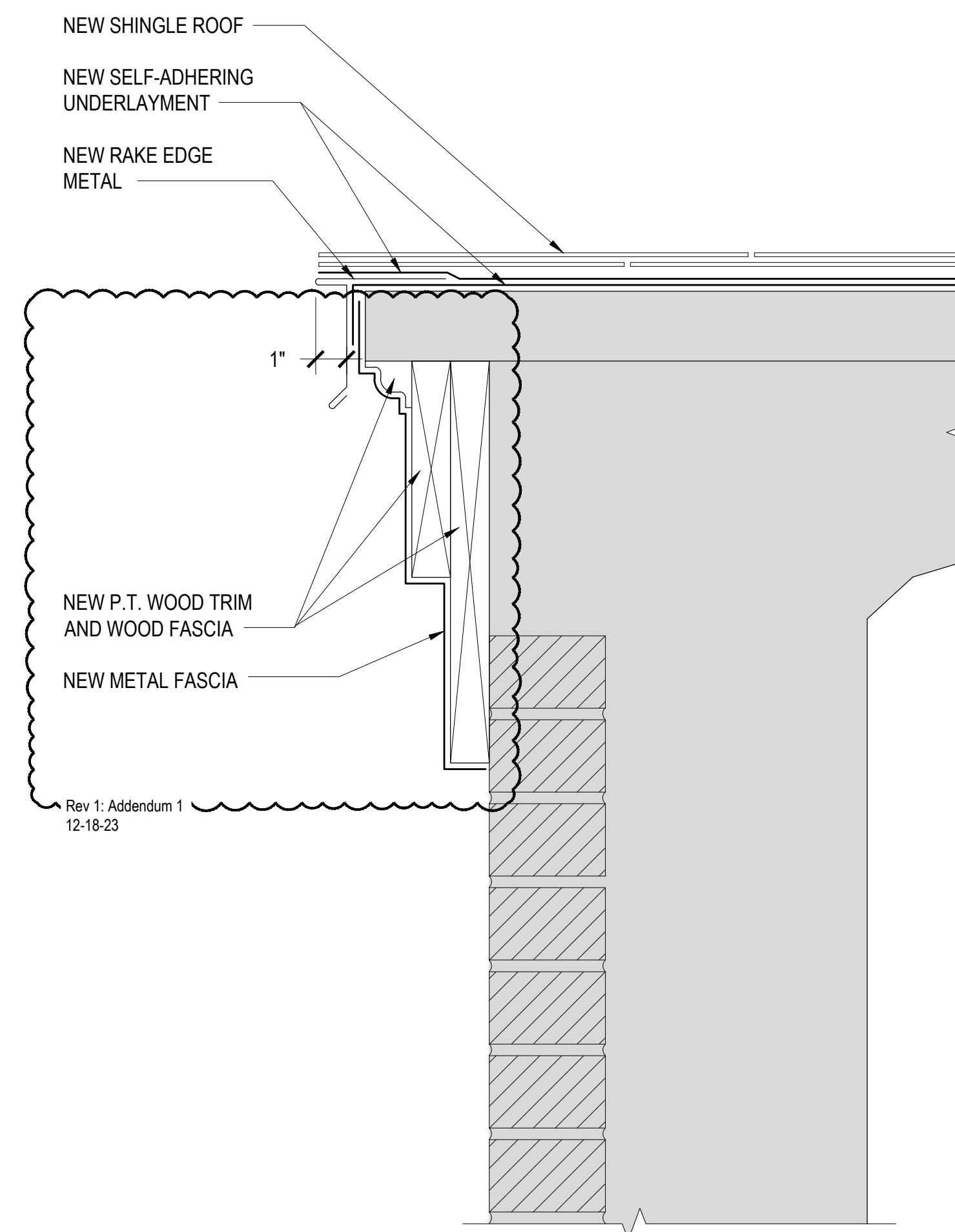
No.	Date	Description
1	12-18-23	ADDENDUM 1

ISSUE DATE: 11/22/23
PROJECT #: 02206.100
DRAWN BY: JK
CHECKED BY: -
© 2023 Sfl+a Architects, PA
All Rights Reserved

EXTERIOR ELEVATIONS



D1 EAVE / GUTTER DETAIL
3" = 1'-0"

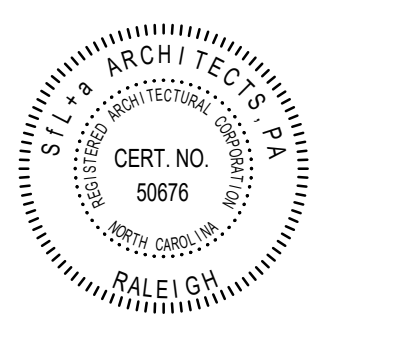


D2 RAKE DETAIL
3" = 1'-0"

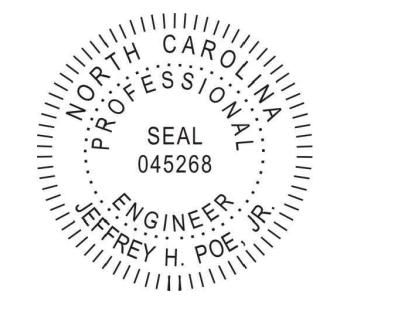
...Becoming the
Leading Designer of
High Performance Facilities
in the Nation with a
Specialty in Alternative
Delivery Methods

333 Fayetteville St, Ste 325
Raleigh, NC 27601
P: 919.573.6390
F: 919.573.6395
www.sfl+a.biz

sfl+a
ARCHITECTS



BID SET



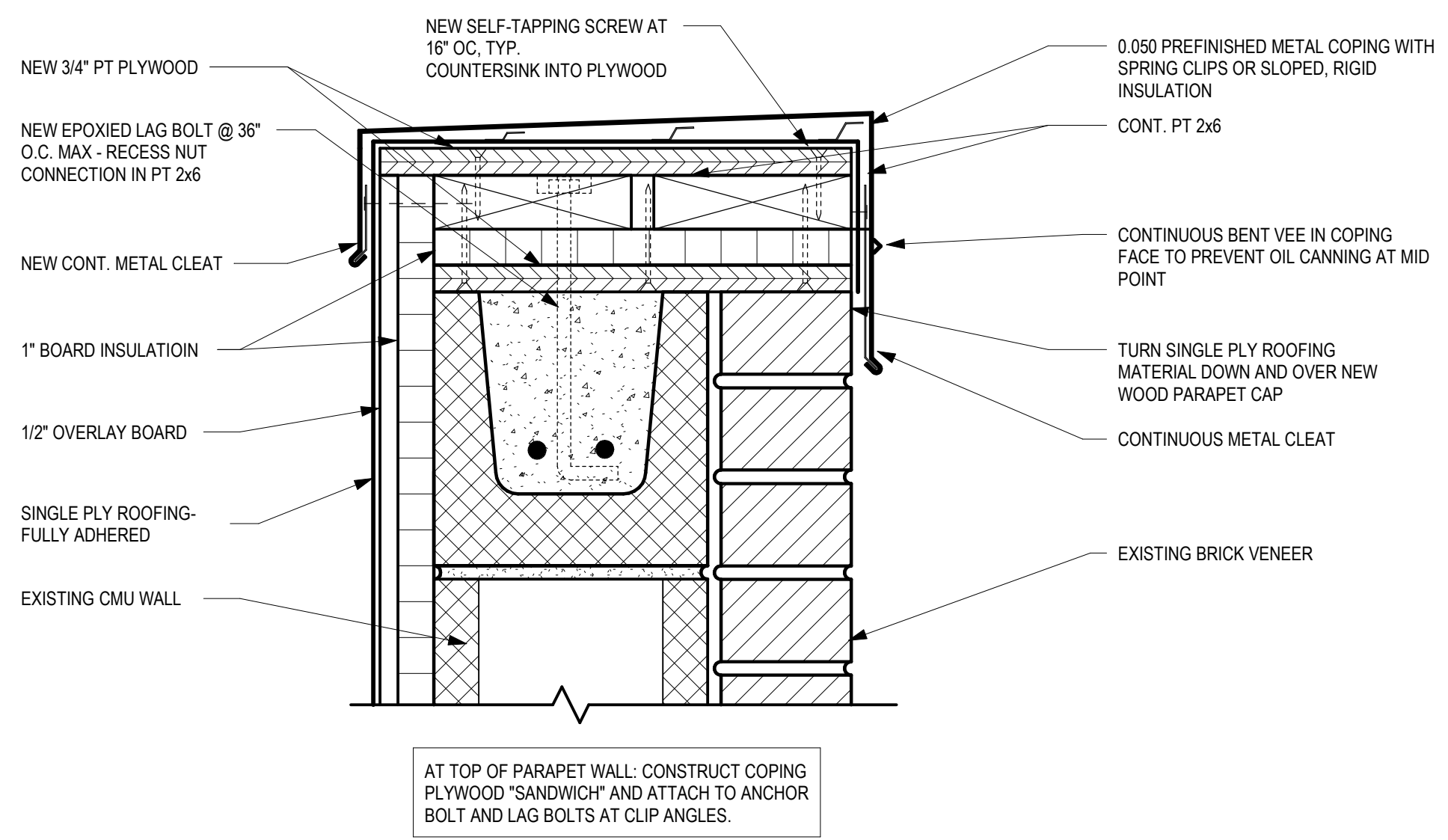
MOORE COUNTY SCHOOLS
**SANDHILLS FARM LIFE ELEMENTARY
GYM RENOVATIONS**
2201 FARM LIFE SCHOOL RD - CARTHAGE, NC 28327

No.	Date	Description
1	12-18-23	Addendum 1

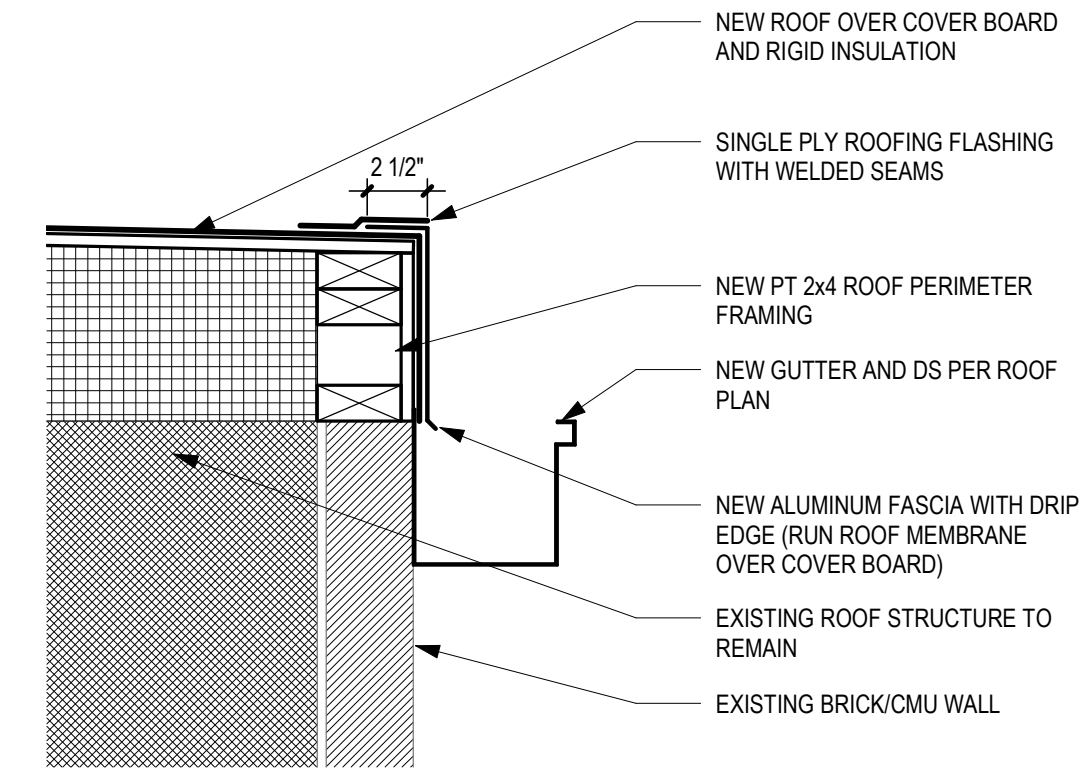
ISSUE DATE: 11-22-2023
PROJECT #: 02206.000
DRAWN BY: SWP
CHECKED BY: VTN
© 2023 SFL+A Architects, PA
All Rights Reserved

SECTIONS &
DETAILS

A-302

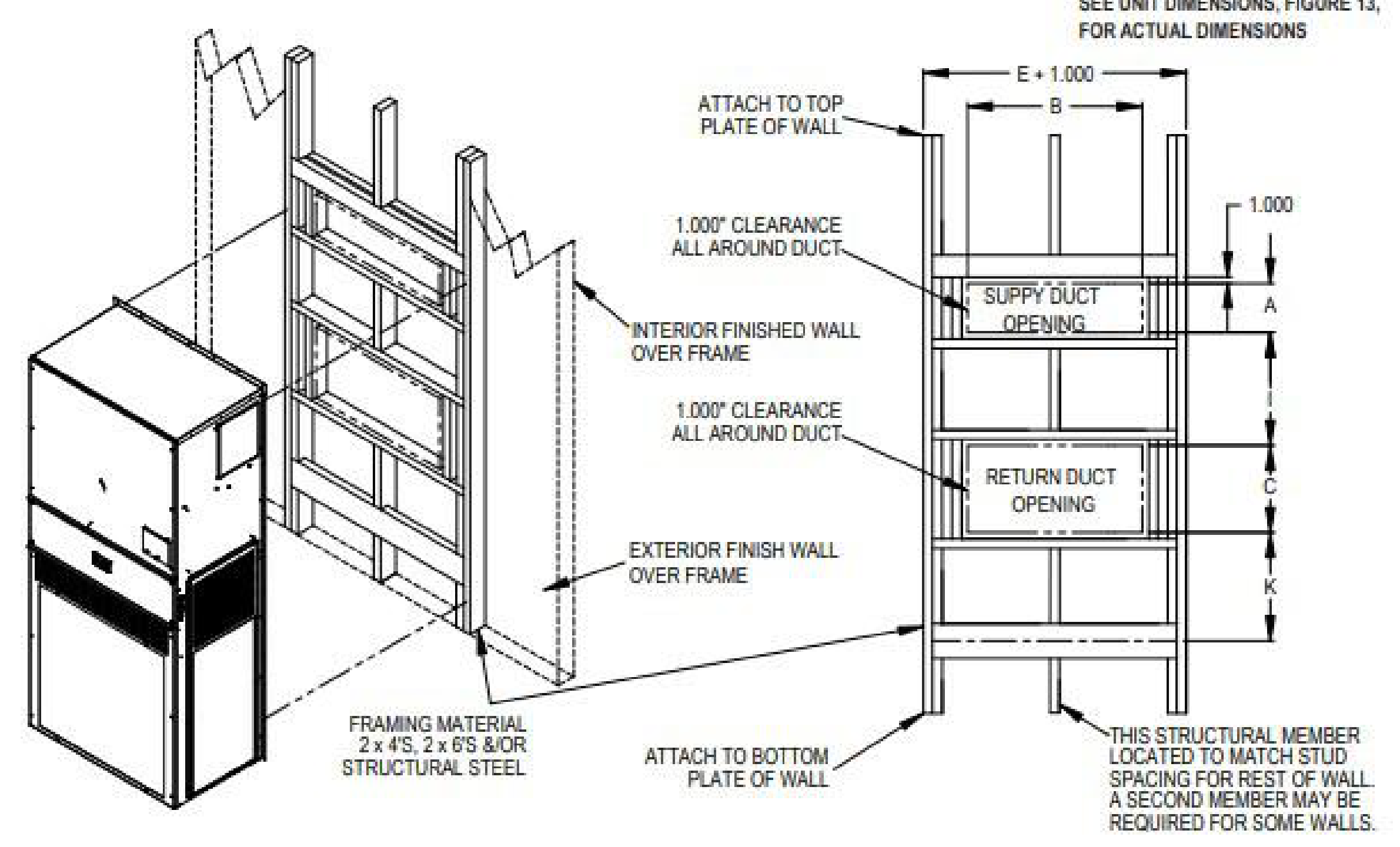


10 PARAPET COPING REPLACEMENT DETAIL
SCALE: 3" = 1'-0"

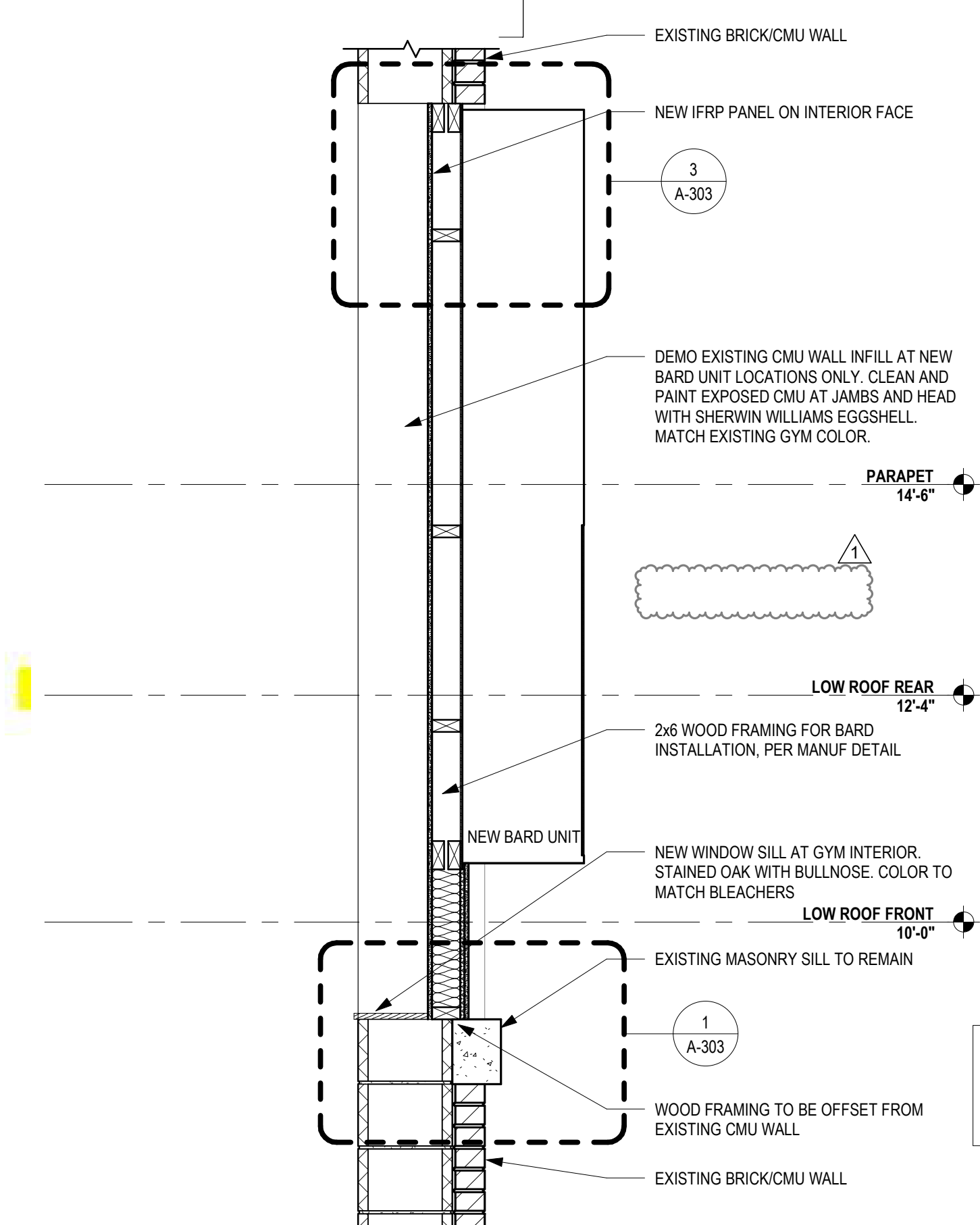


11 LOW ROOF FASCIA SECTION
SCALE: 1 1/2" = 1'-0"

FIGURE 17 Wall Mounting Instructions

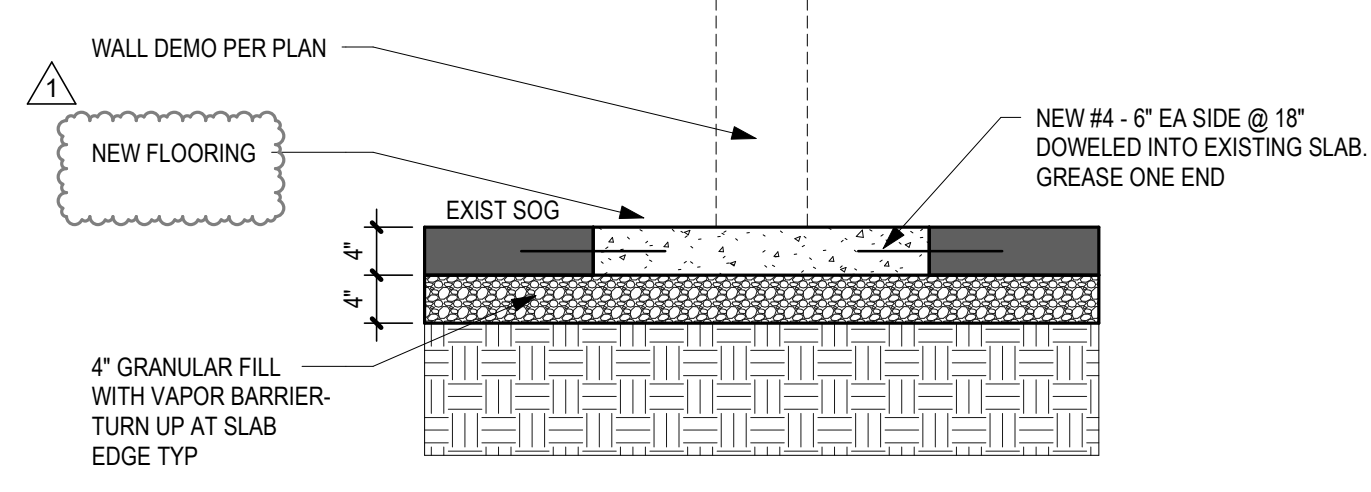


BARD UNIT OPENING FRAMING (FROM MANUF DETAIL)

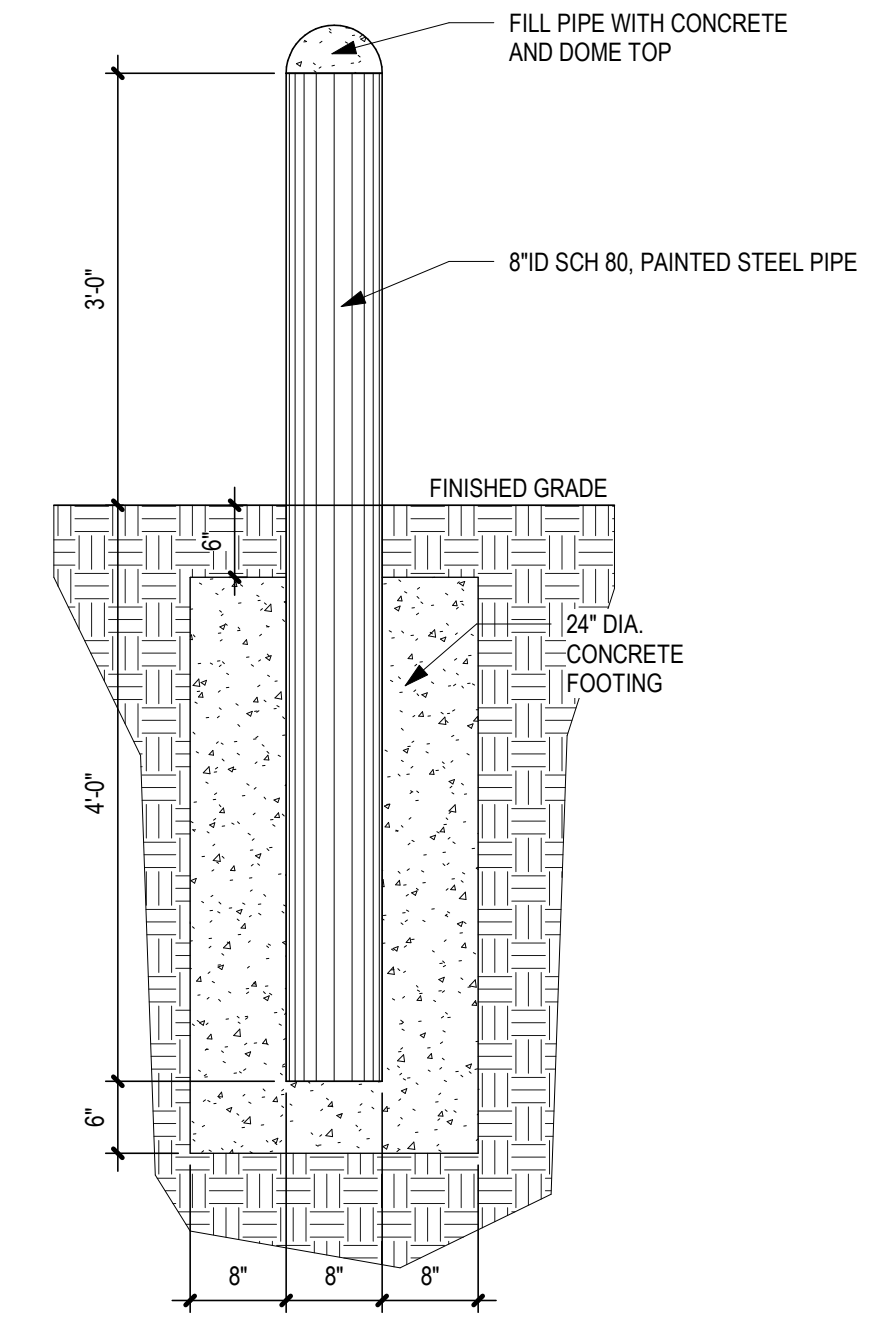


6 WALL OPENING SECTION AT BARD UNIT
SCALE: 3/4" = 1'-0"

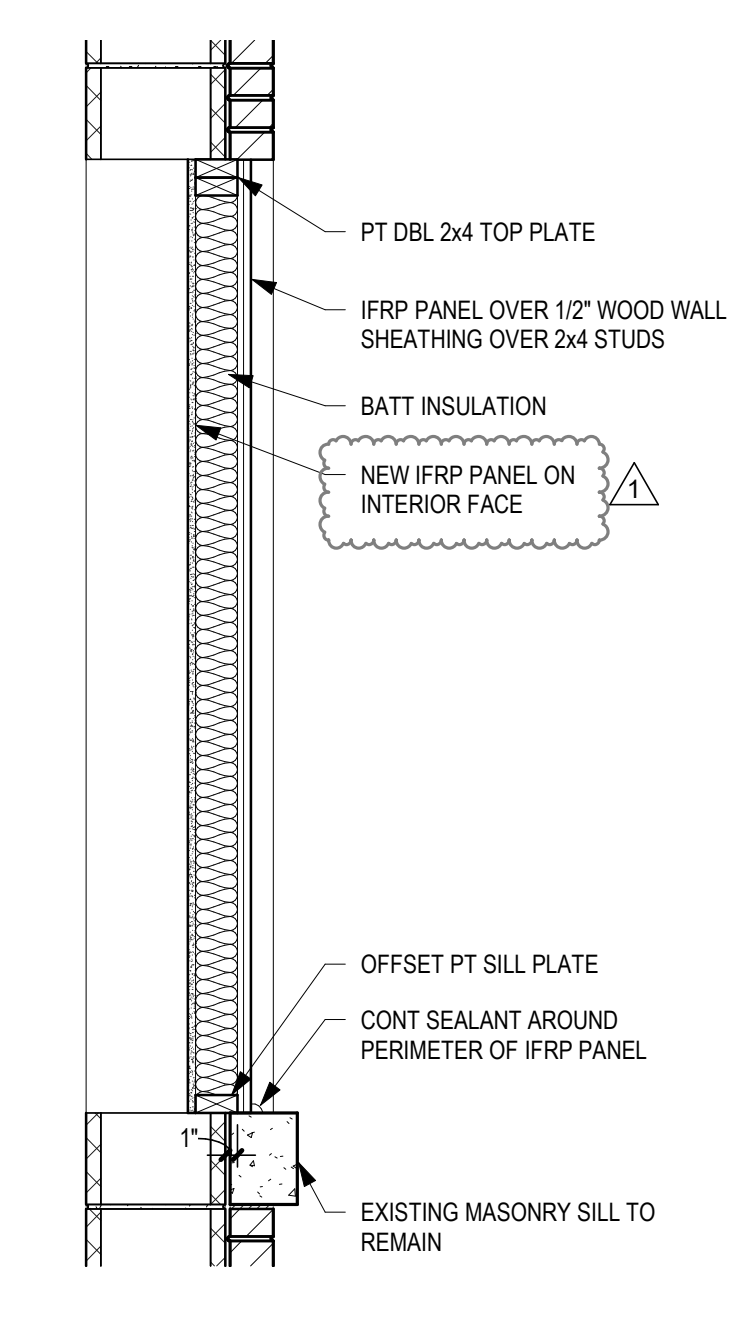
DEMOLITION NOTES:
1) REMOVE EXISTING IFRP PANEL AND CMU OPENING INFILL. DO NOT DAMAGE EXISTING SURROUNDING BRICK.
2) GC TO PROVIDE PROTECTION TO EXISTING BLEACHERS DURING DEMOLITION AND INSTALLATION.



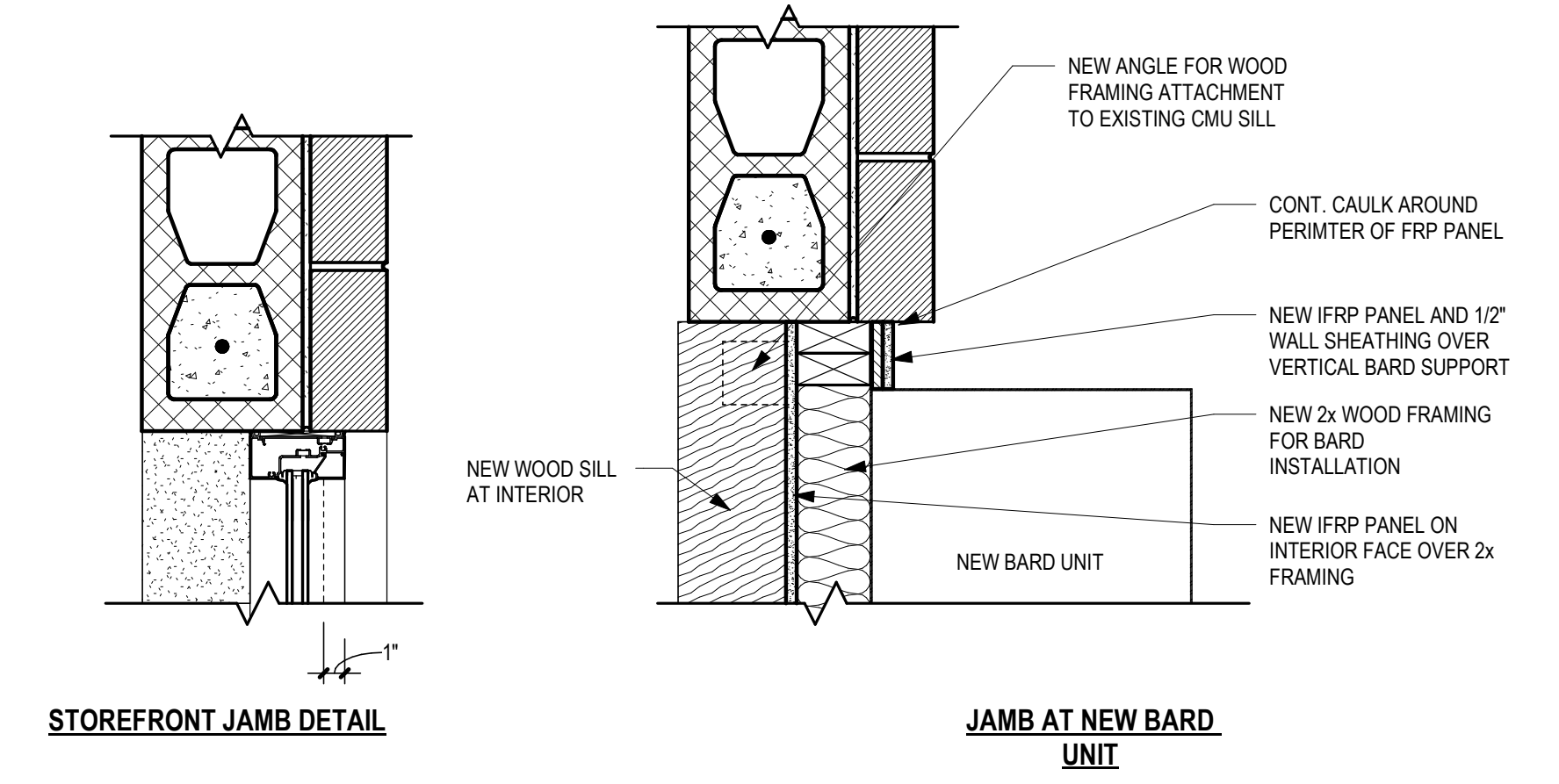
8 EXIST. SLAB REPAIR DETAIL
SCALE: 3/4" = 1'-0"



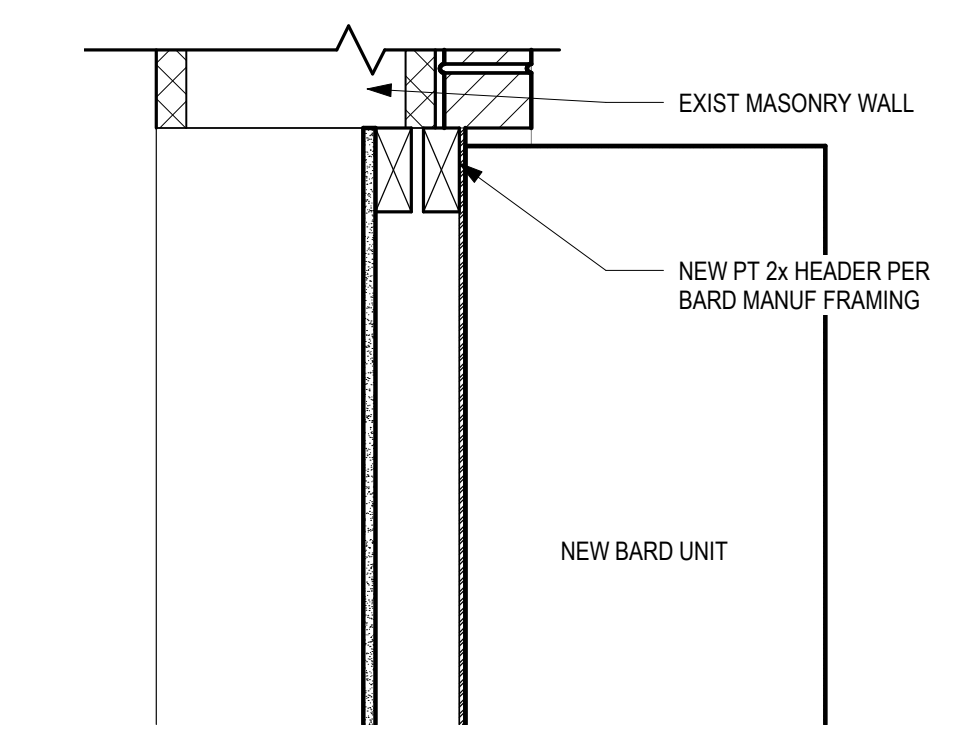
7 SITE BOLLARD
SCALE: 3/4" = 1'-0"



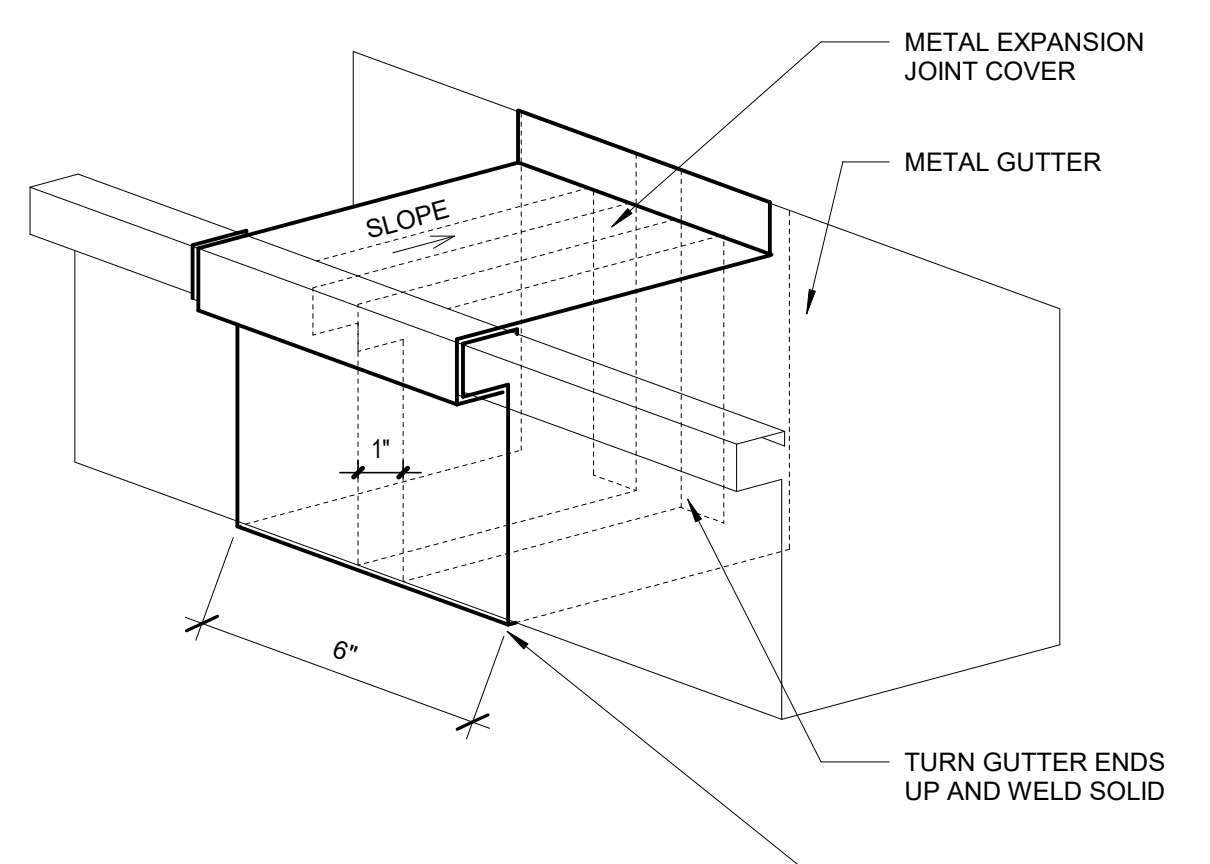
4 IFRP INFILL PANEL SECTION
SCALE: 3/4" = 1'-0"



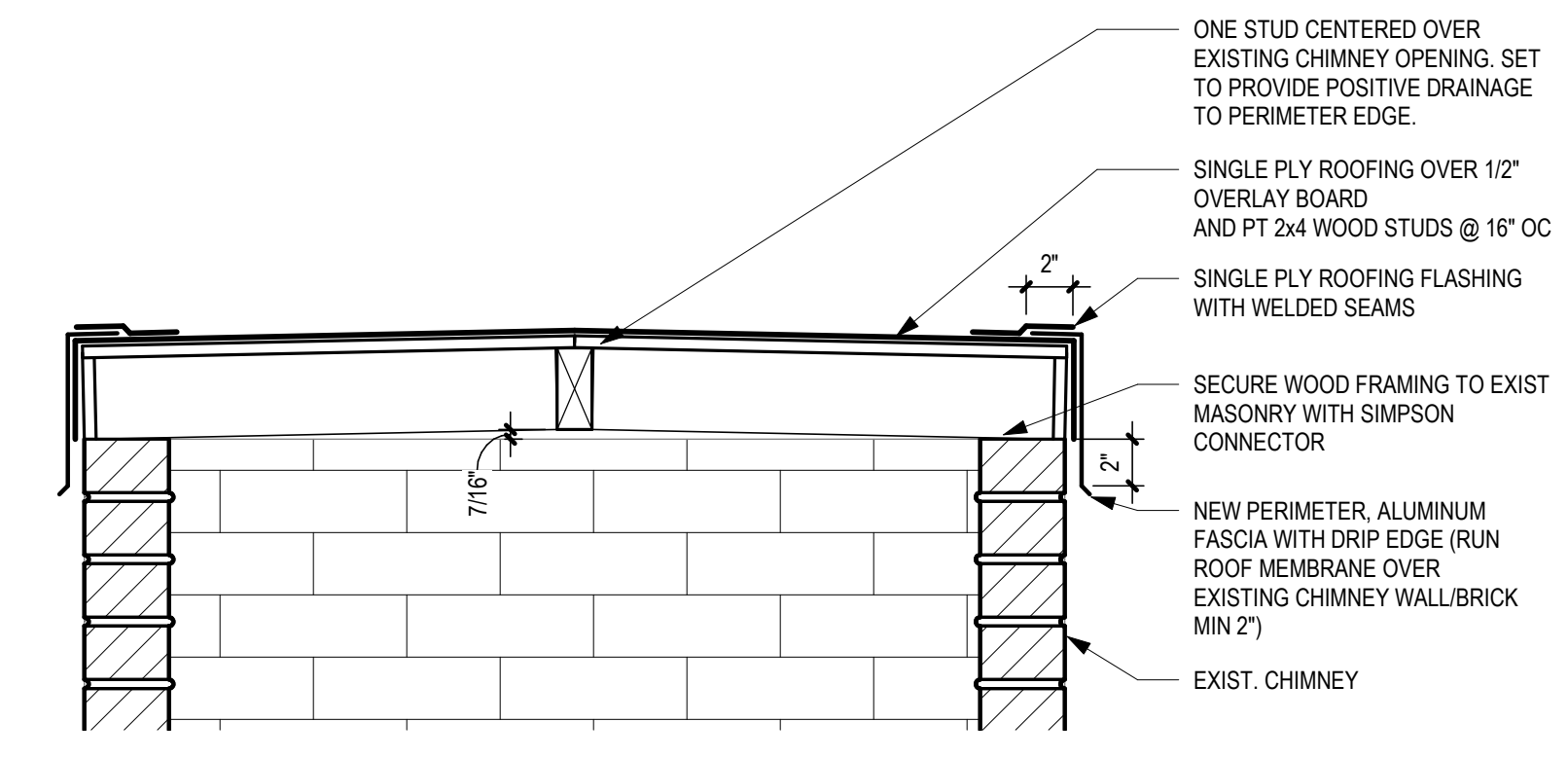
5 WALL JAMB DETAILS
SCALE: 1 1/2" = 1'-0"



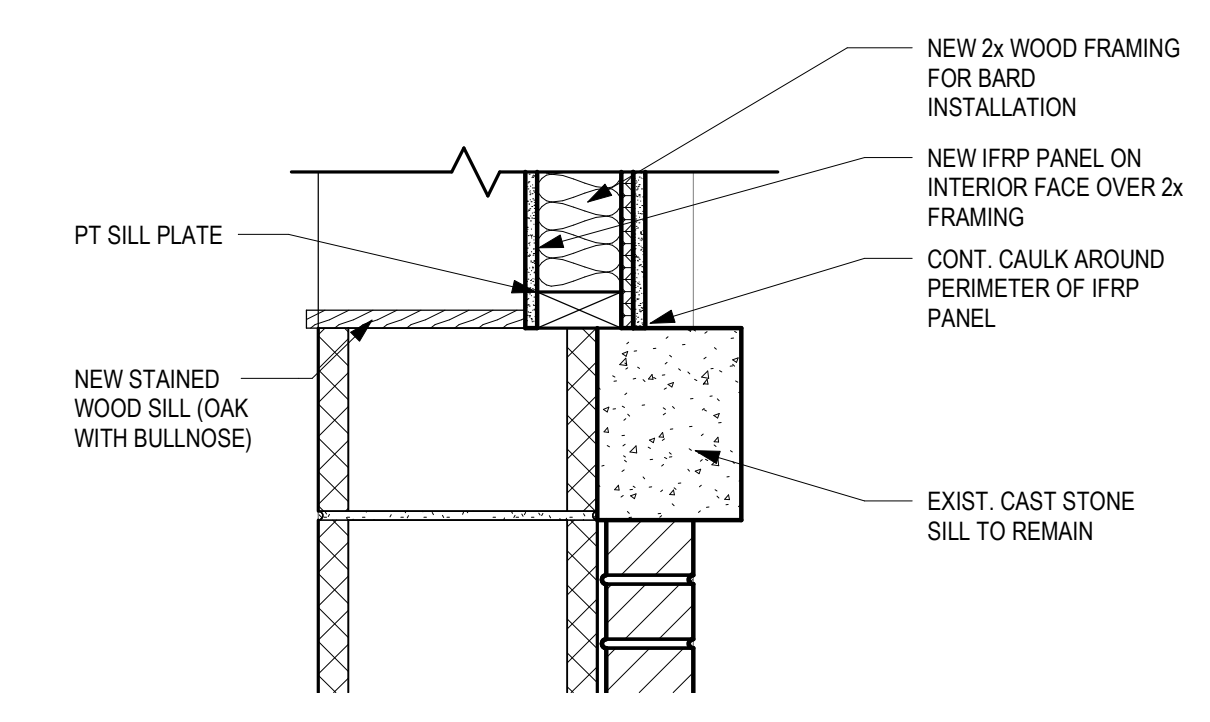
3 WALL HEAD DETAIL AT BARD
SCALE: 1 1/2" = 1'-0"



9 GUTTER EXPANSION JOINT DETAIL
SCALE: 3" = 1'-0"



2 CHIMNEY CAP SECTION DETAIL
SCALE: 1 1/2" = 1'-0"



1 WALL SILL DETAIL AT BARD
SCALE: 1 1/2" = 1'-0"

No.	Date	Description
1	12-18-23	ADDENDUM 1

ISSUE DATE: 11/22/23
PROJECT #: 02206.100
DRAWN BY: JK
CHECKED BY: MK
© 2023 Sfl+a Architects, PA
All Rights Reserved

TRIAD ENGINEERING CONSULTANTS, INC.
 Email: Admin@TriadEngMEP.com
 2639-100 Wilford Dairy Rd
 High Point, NC 27265
 (336) 338-8943
 PLS License C-0492 2009
 ENGINEERING THE PENNANT
 2009-2024-2025

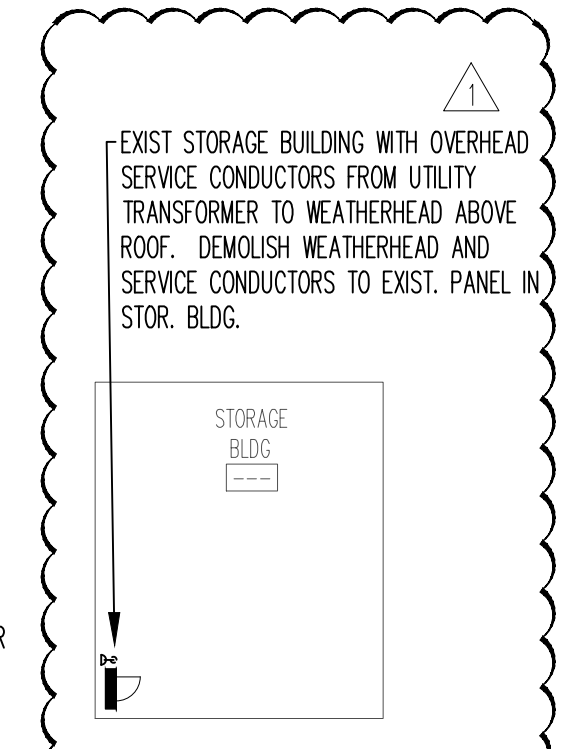
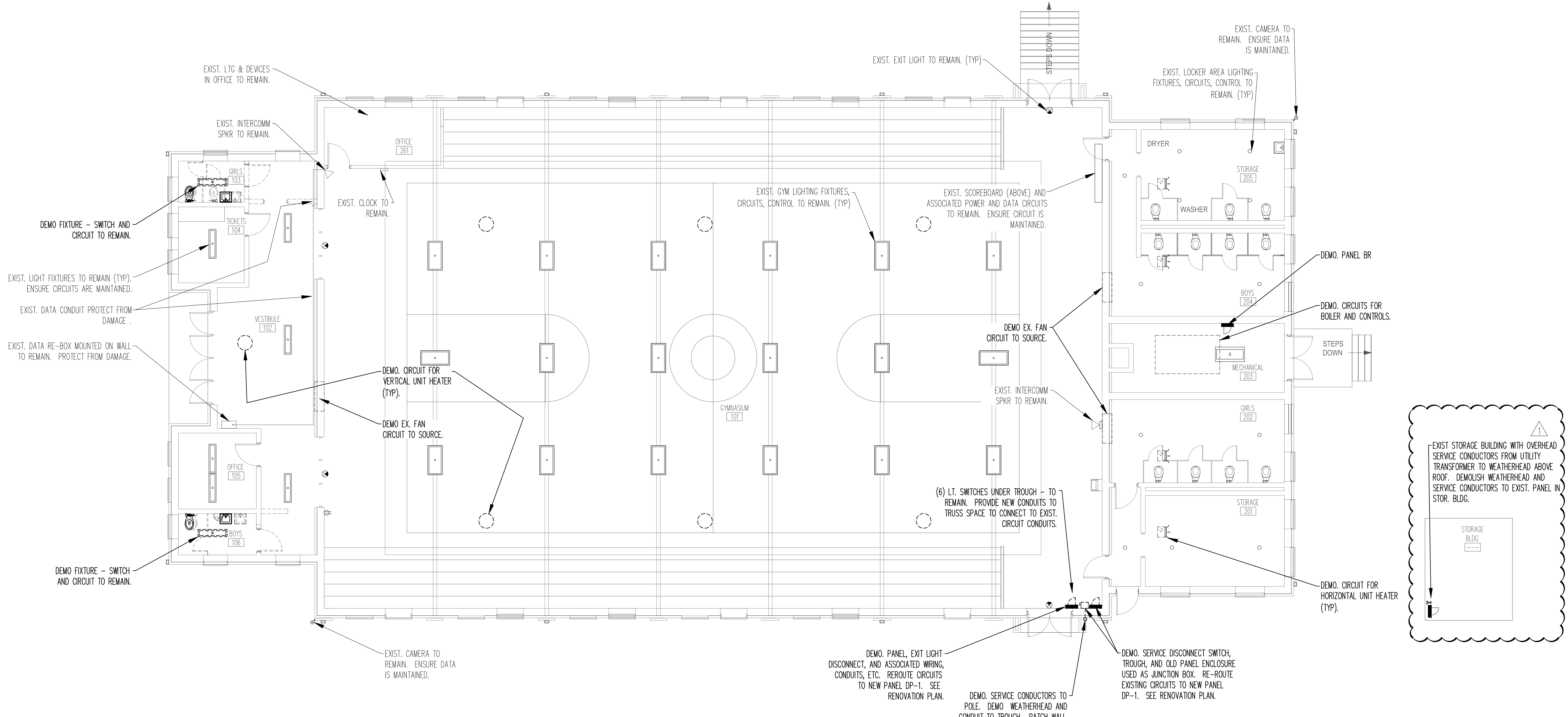
PLUMBING MECHANICAL AND ELECTRICAL ENGINEERING

Becoming the
 Leading Designer of
 High Performance Facilities
 in the Nation with a
 Specialty in Alternative
 Delivery Methods

333 Fayetteville St, Ste 225
 Raleigh, NC 27601
 P. 919.574.6350
 F. 919.573.4355
 www.sfl+a.biz

sfl+a
 ARCHITECTS

ARCHITECTURAL PROFESSIONAL SEAL
 CERT. NO. 50076
 TERRY M. CHALLETON
 RALEIGH, NC



ELECTRICAL DEMOLITION PLAN
 1 ELO SCALE: 1/8" = 1'-0"

- DEMOLITION NOTES:**
- PROTECT GYM FLOOR FROM DAMAGE DURING THE DEMOLITION AND RENOVATION ACTIVITIES. PROVIDE ROSN PAPER COVER OVER THE FLOOR SURFACE AND 3/4" PLYWOOD OR MDF BOARD TO DISTRIBUTE LOADING FROM LIFT TRAFFIC NEEDED FOR THE WORK.
 - DEMO CIRCUITS FOR EQUIPMENT THAT IS TO BE REMOVED. REMOVE CIRCUITS TO SOURCE.
 - DEMO LIGHT FIXTURES INDICATED. EXISTING CIRCUITS ARE TO BE RE-USED UNLESS INDICATED OTHERWISE.
 - DEMO ALL DEVICES AND CIRCUITS IN WALLS THAT ARE TO BE DEMOLISHED.
 - PATCH HOLES IN WALLS, CEILING, ETC. WHERE CONDUITS OR DEVICES ARE REMOVED. PATCH WITH MATERIAL SUITABLE WITH EXISTING CONSTRUCTION AND READY FOR APPLICATION OF FINAL FINISH.
 - SURFACE RECEPTABLES AND RACEWAYS AND THEIR ASSOCIATED CIRCUITS THAT HAVE BEEN ADDED SINCE ORIGINAL CONSTRUCTION SHALL REMAIN.
 - DEMO DEVICES IN WALLS THAT ARE TO BE DEMOLISHED OR IN CONFLICT WITH NEW WORK.
 - ENSURE CONTINUITY IS MAINTAINED FOR CIRCUITS THAT REMAIN. IN THE EVENT CIRCUITS ARE INTERRUPTED BY DEMOLITION OF WALLS, OR FEED-THRU DEVICES, PROVIDE #12 CONDUCTORS AND GROUND IN 1/2" CONDUIT AS REQUIRED TO RESTORE CIRCUIT CONTINUITY.
 - EXISTING CAMERAS, SPEAKER, ETC ON INTERIOR AND EXTERIOR WALLS OF GYM BUILDING ARE TO REMAIN. PROTECT FROM DAMAGE AND ENSURE CABLE IS MAINTAINED TO DEVICES.

BID SET

MOORE COUNTY SCHOOLS
SANDHILLS GYMNASIUM RENOVATION
 2201 FARM LIFE SCHOOL RD., CARTHAGE NC 27341

No.	Date	Description
01	12/18/2023	ADDED STOR. BLDG.

ISSUE DATE: 11/22/23
 PROJECT #: 02206.100
 DRAWN BY: PVG
 CHECKED BY: PVG
 © 2023 SFL+a Architects, PA
 All Rights Reserved

ELECTRICAL DEMOLITION PLAN

E1.0

9/9/2022 10:44:49 AM R:\02206.000 MCS Gymnasium Modernizations\630 Models\02206.000 Cameron ES Gym TEMP VC WORK\cvt

TRIAD ENGINEERING CONSULTANTS, INC.
 Email: Admin@TriadEngMEP.com
 2639-100 Wilford Dairy Rd
 High Point, NC 27265
 (336) 338-8843
 Firm License C-0492 2009
 ENGINEERING THE FUTURE SINCE 1984

PLUMBING MECHANICAL AND ELECTRICAL ENGINEERING

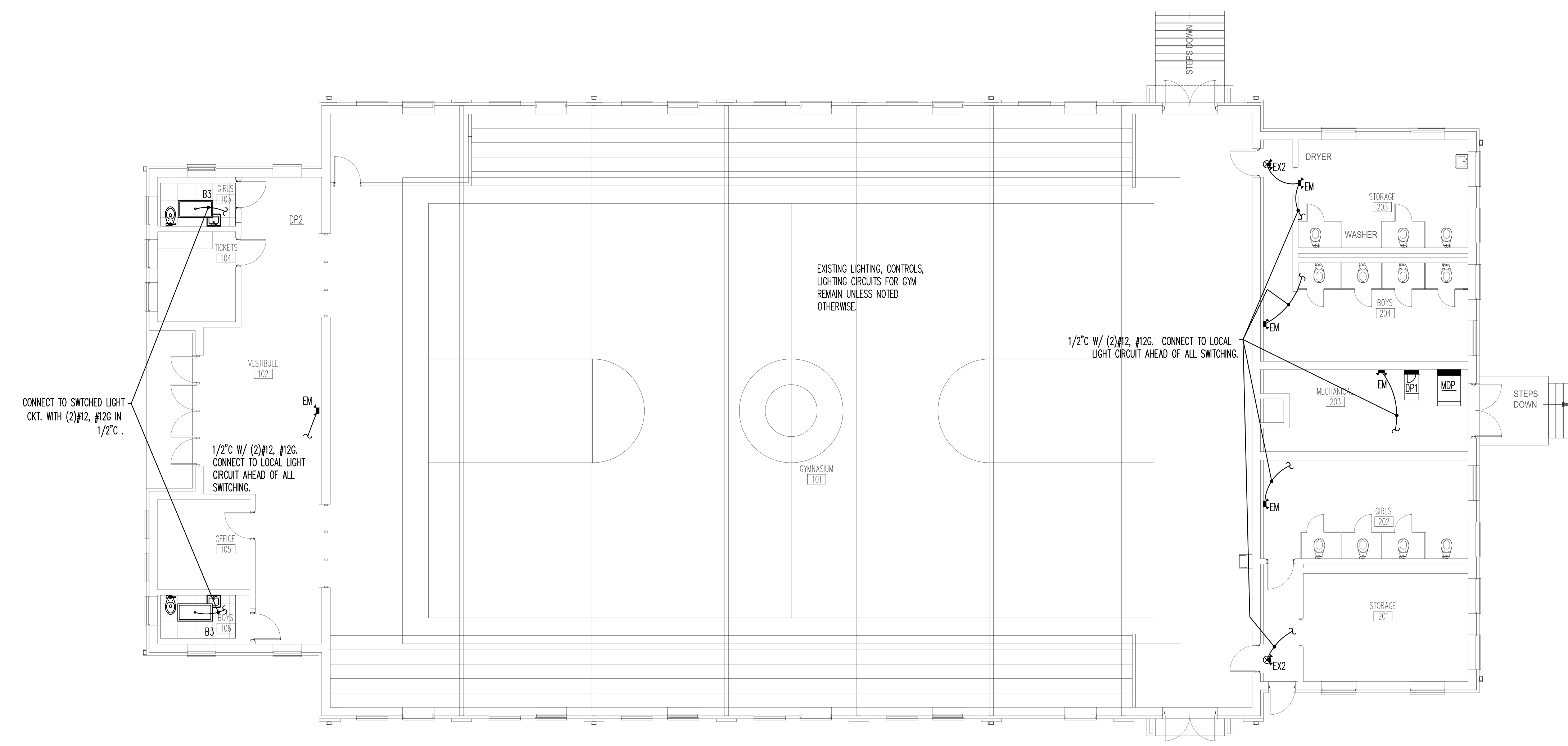
Professional Engineer Seal
 151823
 14498
 ENGINEER
 DEBBY M. GUALANDI
 RALEIGH

Becoming the Leading Designer of High Performance Facilities in the Nation with a Specialty in Alternative Delivery Methods

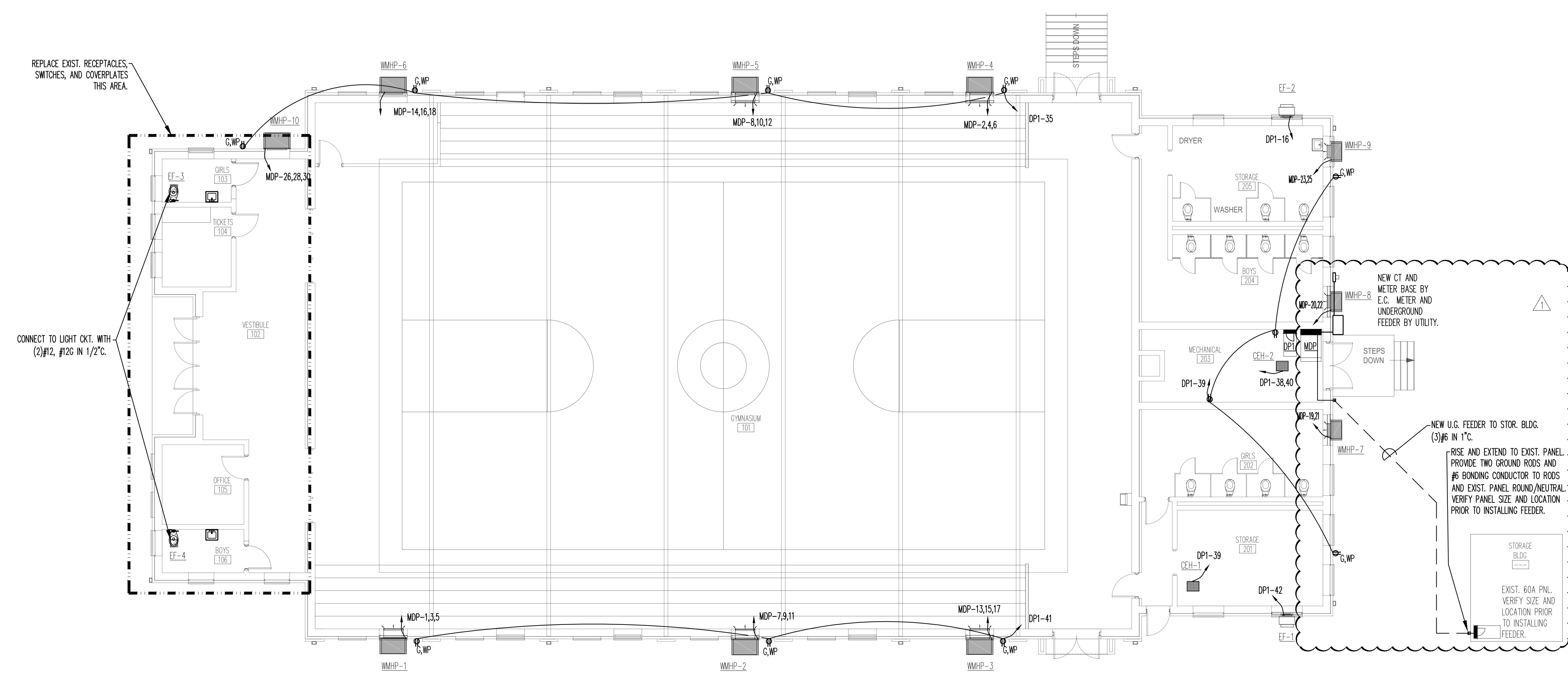
333 Fayetteville St, Ste 225
 Raleigh, NC 27601
 P: 919.574.6950
 F: 919.573.4355
 www.sfl+a.biz

sfl+a ARCHITECTS

ARCHITECTURAL PROFESSIONAL SEAL
 CERT. NO. 50076
 DEBBY M. GUALANDI
 RALEIGH



ELECTRICAL LIGHTING PLAN
 2
 E1.1 SCALE: 1/8" = 1'-0"



ELECTRICAL POWER PLAN
 1
 E1.1 SCALE: 1/8" = 1'-0"

BID SET

MOORE COUNTY SCHOOLS
SANDHILLS GYMNASIUM RENOVATION
 2201 FARM LIFE SCHOOL RD., CARTHAGE NC 27341

No.	Date	Description
01	12/18/2023	ADDED STOR. BLDG

ISSUE DATE: 11/22/23
 PROJECT #: 02206.100
 DRAWN BY: PVG
 CHECKED BY: PVG
 © 2023 SFL+a Architects, PA
 All Rights Reserved

ELECTRICAL RENOVATION PLANS

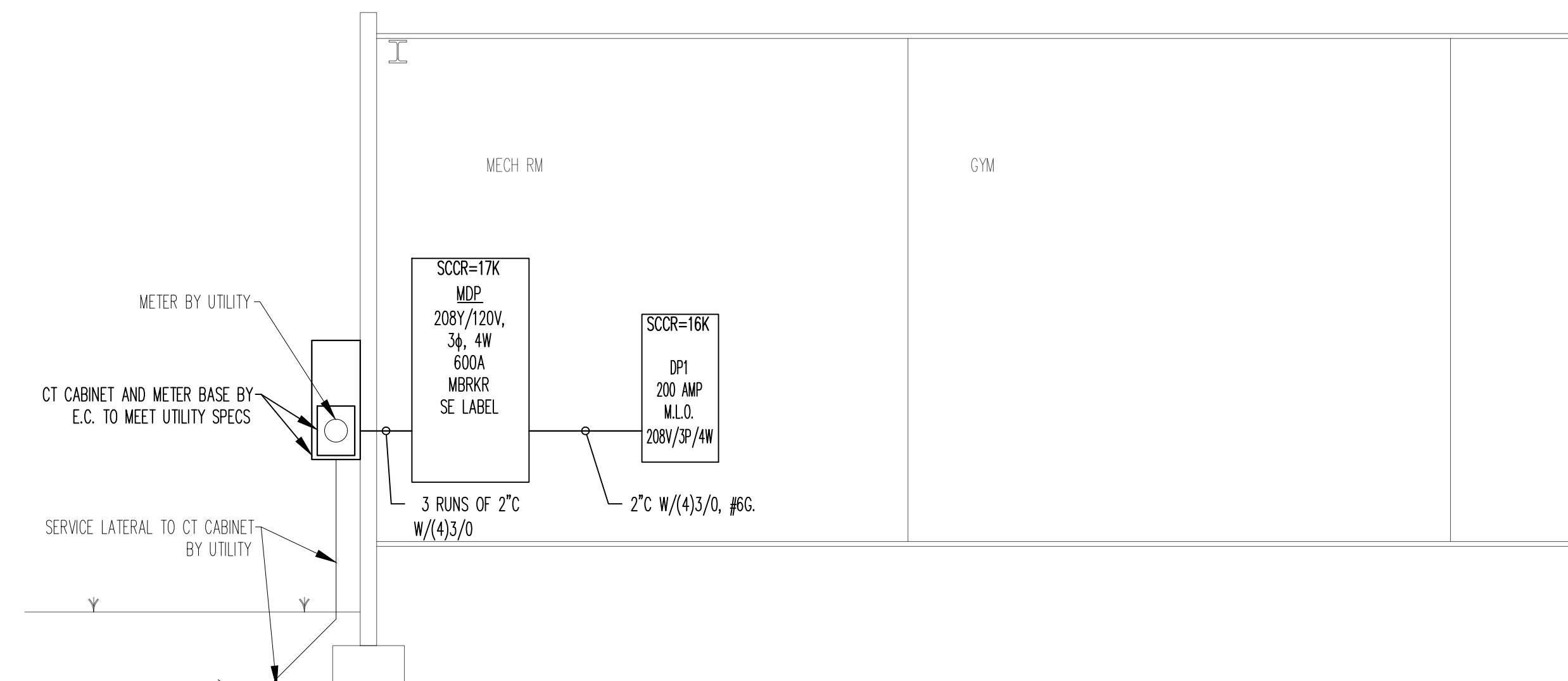
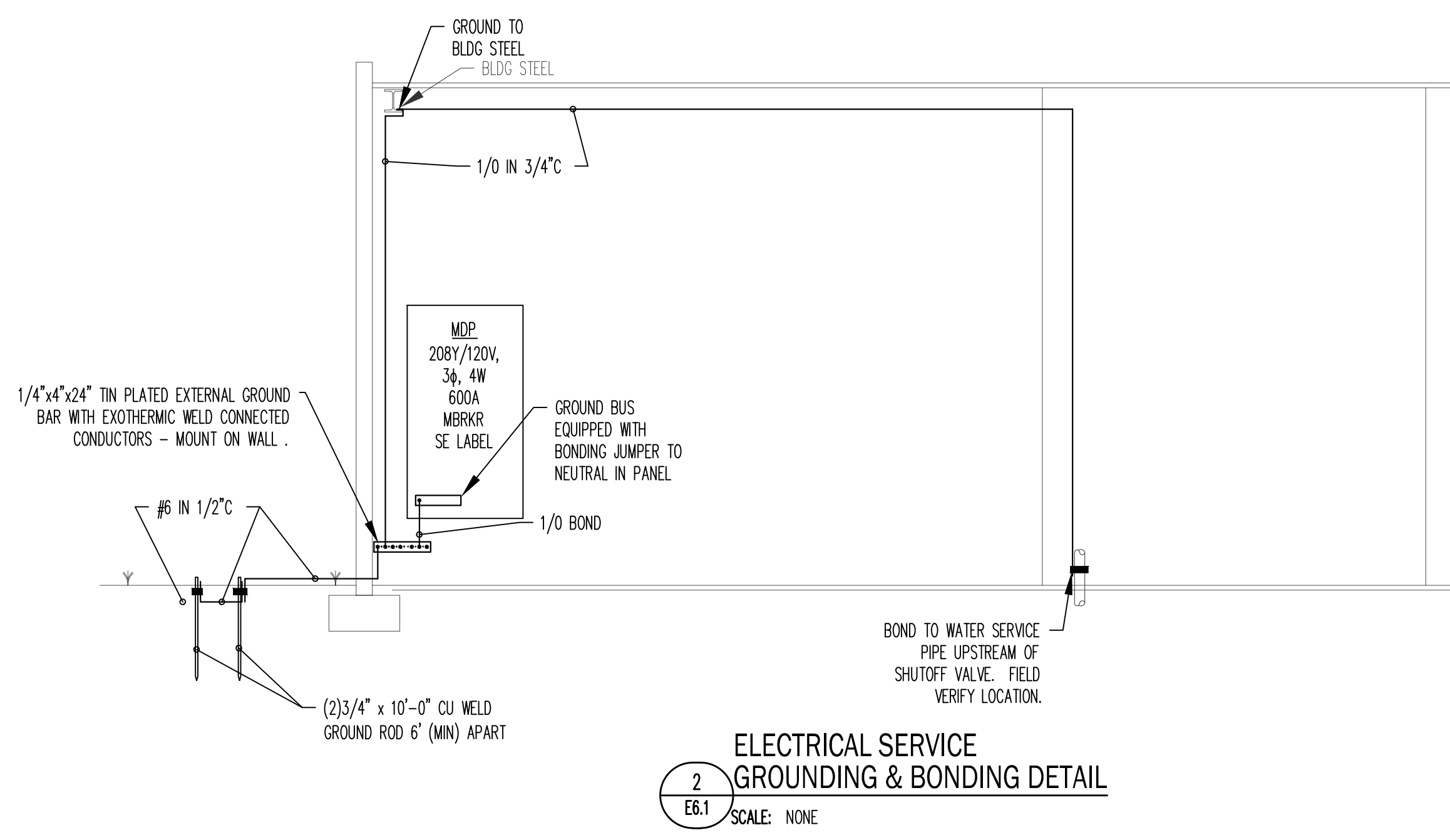
E1.1

MECHANICAL 203 PANEL MDP PROJECT: SANDHILLS FARM LIFE
JOB No. 2309
LOAD TABLE with columns: VA, #, LOAD, Ph, N, G, C, BKR, A, B, C, BKR, Ph, N, G, C, LOAD, #, VA. Includes SUBTOTAL AMPS PH A-C and SERVICE CHARACTERISTICS.

MECHANICAL 203 PANEL PNL DP1 PROJECT: SANDHILLS FARM LIFE
JOB No. 2309
LOAD TABLE with columns: VA, #, LOAD, Ph, N, G, C, BKR, A, B, C, BKR, Ph, N, G, C, LOAD, #, VA. Includes SUBTOTAL AMPS PH A-C and SERVICE CHARACTERISTICS.

NEC 220 SERVICE DEMAND LOAD CALCULATION
OPTIONAL METHOD 220.86 FOR SCHOOLS
BUILDING DATA SANDHILLS FARM LIFE E.S.
SERVICE DEMAND LOAD CALCULATION
SERVICE CHARACTERISTICS

NEW ELECTRICAL SERVICE
NEC 220.86 DEMAND CALCULATION
E6.1 SCALE: NONE



AVAILABLE SHORT CIRCUIT CALCULATIONS - SANDHILLS FARM LIFE
TABLE with columns: SEGMENT, SOURCE SCC (AMPS), ONE-WAY DISTANCE (FT), CONDUCT. MATERIAL (CU OR AL), FEEDER SIZE, # COND. PER PHASE, PVC OR STEEL CONDUIT, "C" PER COND., "F" TOTAL, "M" FACTOR, SEG. END SCC (AMPS).

- SERVICE RISER DIAGRAM NOTES:
1. ALL CONDUCTORS SHALL BE COPPER.
2. SHORT CIRCUIT VALUES ARE BASED ON 150 KVA TRANSFORMER WITH IMPEDANCE VALUE OF 2.0%...
3. PROVIDE ARC-FLASH HAZARD WARNING SIGNAGE ON EACH PANEL.
4. FURNISH TVSS SURGE SUPPRESSOR FOR SERVICE PANEL...
5. IDENTIFY EACH PANEL WITH COVER USING ENGRAVED LAMINATED NAMEPLATE...
6. PROVIDE A COMPLETE MACHINE PRINTED CIRCUIT DIRECTORY FOR EACH PANEL WITH A DOOR IDENTIFYING EACH CIRCUIT...