

ADDENDUM NO. 2

COSMETOLOGY SUITE RENOVATION

LENOIR COMMUNITY COLLEGE
KINSTON, NORTH CAROLINA

PROJECT MANUAL

Architect's Project Number: 630401

Prepared by

MOSELEY ARCHITECTS
911 N. WEST STREET
SUITE #205
RALEIGH, NORTH CAROLINA 27603

DATE OF ISSUE – March 6, 2024

1 **GENERAL:**

2 Planholders are requested to attach this Addendum to the inside front cover of each Project Manual.
3 Inform all concerned that the Bidding Documents are modified by this Addendum.

4 The following modifications and clarifications are hereby made a part of the Bidding Documents and
5 supersede or otherwise modify the provisions of the published *Project Manual* and *Drawings*, dated
6 [December 20, 2023](#).

7 Refer to the Drawings, Specification Sections, or other Documents, if any, attached to this Addendum,
8 which are hereby made a part of this Addendum.

9 **MODIFICATIONS TO THE DRAWINGS:**

10 **DELETE** the previously issued Documents indicated below in their entirety, noted as Addendum No. 1,
11 dated [February 27, 2024](#).

12 P6.1 - SCHEDULES

13 **ADD** new Documents indicated below in their entirety, noted as Addendum No. 1, dated [March 6, 2024](#).

14 P6.1 - SCHEDULES

15

16 **REFER TO DOCUMENTS ATTACHED TO THE END OF THIS ADDENDUM**

17

18

END OF ADDENDUM NO. 2

J
I
H
G
F
E
D
C
B
A

THERMOSTATIC MIXING VALVE SCHEDULE											
TAG	BASIS OF DESIGN			DESIGN FLOW (GPM)	FLOW RANGE (GPM)	MAX P.D. AT DESIGN FLOW (PSI)	HW SYSTEM TEMPERATURES		CONNECTION SIZE		NOTES
	MANUFACTURER	MODEL					INLET (°F)	OUTLET (°F)	INLET (IN)	OUTLET (IN)	
TMV	LEONARD	LM		2	10		120	110	3/4	3/4	TD

1. PROVIDE THERMOSTATIC MIXING VALVE ASSEMBLY WITH STAINLESS STEEL WALL-MOUNTED CABINET AND TYP. GAUGES ON INLETS AND OUTLET.
2. PROVIDE ASSE-1070 VALVE FOR ALL PUBLIC LAVATORIES AND SINKS. UNIT SHALL BE MOUNTED CONCEALED FROM VIEW BELOW FIXTURE.

DRAIN AND CLEANOUT SCHEDULE				
TAG	BASIS OF DESIGN		STRAINER/GRATE	NOTES
	MANUFACTURER	MODEL		
TD-1	JAY R SMITH	9940	9870-492-RC	
TD-2	JAY R SMITH	9930	9870-492-RC	

INSULATION SCHEDULE								
SERVICE	LOCATION	TEMPERATURE	INSULATION	JACKETING	WEATHERPROOFING	MINIMUM INSULATION THICKNESS		NOTES
						PIPES SIZE (IN)	THICKNESS (IN)	
DOMESTIC COLD WATER	INDOORS	40°F - 60°F	ELASTOMERIC	ASJ	NONE	0.50-4.00	1.00	
						0.50-1.00	1.00	
						1.25-1.50	1.50	
						2.00-4.00	2.00	
DOMESTIC HOT WATER AND HOT WATER RETURN	INDOORS	100°F - 200°F	MOLDED FIBERGLASS	ASJ	NONE	0.50-1.00	1.00	
						0.50-1.00	1.00	
						1.25-1.50	1.50	
						2.00-4.00	2.00	
TEPID WATER AND TEPID WATER RETURN	INDOORS	60°F - 90°F	MOLDED FIBERGLASS	ASJ	NONE	1.25-1.50	1.50	
STORM DRAINAGE	INDOORS	40°F - 60°F	MOLDED FIBERGLASS	ASJ	NONE/NONE	2.00-12.00	1.00	1
EXTERIOR DOMESTIC COLD WATER	OUTDOORS	40°F - 60°F	MOLDED FIBERGLASS	ASJ	ALUMINUM JACKET	0.50-4.00	2.00	2
HEAT EXCHANGER	INDOORS	230°F	CALCIUM SILICATE	ALUMINUM JACKET	NONE	N/A	N/A	3

1. PROVIDE INSULATION FOR INDOOR HORIZONTAL STORM DRAINAGE PIPING INCLUDING DRAIN BODY AND OVERFLOW SECONDARY STORM PIPING.
2. PROVIDE OUTDOOR PIPING EXPOSED TO FREEZE CONDITIONS, TO RECEIVE HEAT TRACINGS, INSULATION, AND ALUMINUM JACKETING.
3. REFER TO SPECIFICATIONS FOR FIELD APPLIED INSULATION.

PUMP SCHEDULE																	
TAG	BASIS OF DESIGN		LOCATION	SYSTEM TYPE	PUMP TYPE	OPERATING DATA					ELECTRICAL DATA			CONNECTION SIZE		NOTES	
	MANUFACTURER	MODEL				FLOW (GPM)	PRESSURE (FT)	EFFICIENCY	POWER (HP)	SPEED (RPM)	VOLTS	PHASE	HERTZ	INLET (IN)	OUTLET (IN)		
RP	GRUNDFOS	1 FOR 1	CEILING	DOMESTIC HOT WATER MAINTENANCE	INLINE	FIELD VERIFY	FIELD VERIFY	FIELD VERIFY	FIELD VERIFY	FIELD VERIFY	FIELD VERIFY	FIELD VERIFY	FIELD VERIFY	FIELD VERIFY	FIELD VERIFY	FIELD VERIFY	1,2

1. PROVIDE ECM-CONTROLLED RECIRCULATION PUMP WITH INTEGRAL TEMPERATURE AND PRESSURE SENSORS AND LOGIC. UNIT SHALL BE FULLY ADJUSTABLE FOR VARYING FIELD CONDITIONS.
2. 1 FOR 1 SIZE/MANUFACTURER REPLACEMENT. UPDATE MOTOR FOR ENERGY-CONSUMPTION COMPLIANCE.

PLUMBING FIXTURE SCHEDULE										
TAG	FIXTURE	HEIGHT A.F.F.	BASIS OF DESIGN	PIPE SIZE					LEED USAGE DATA	NOTES
				COLD WATER	TEPID WATER	HOT WATER	VENT	SOIL WASTE		
SK-1	OWNER FURNISHED PEDICURE STATION	--NA--	--NA--	1/2"	--NA--	1/2"	1-1/2"	2"	--NA--	
SK-2	OWNER FURNISHED HAIR-WASH STATION	--NA--	--NA--	1/2"	--NA--	1/2"	1-1/2"	2"	--NA--	
SK-3	ELKAY ELUH4D211550PD & DELTA RP64070	REFER TO ARCHITECTURAL ADA COMPLIANT	UNDERMOUNT SINK	1/2"	--NA--	1/2"	1-1/2"	2"	--NA--	1,2,3,4,5

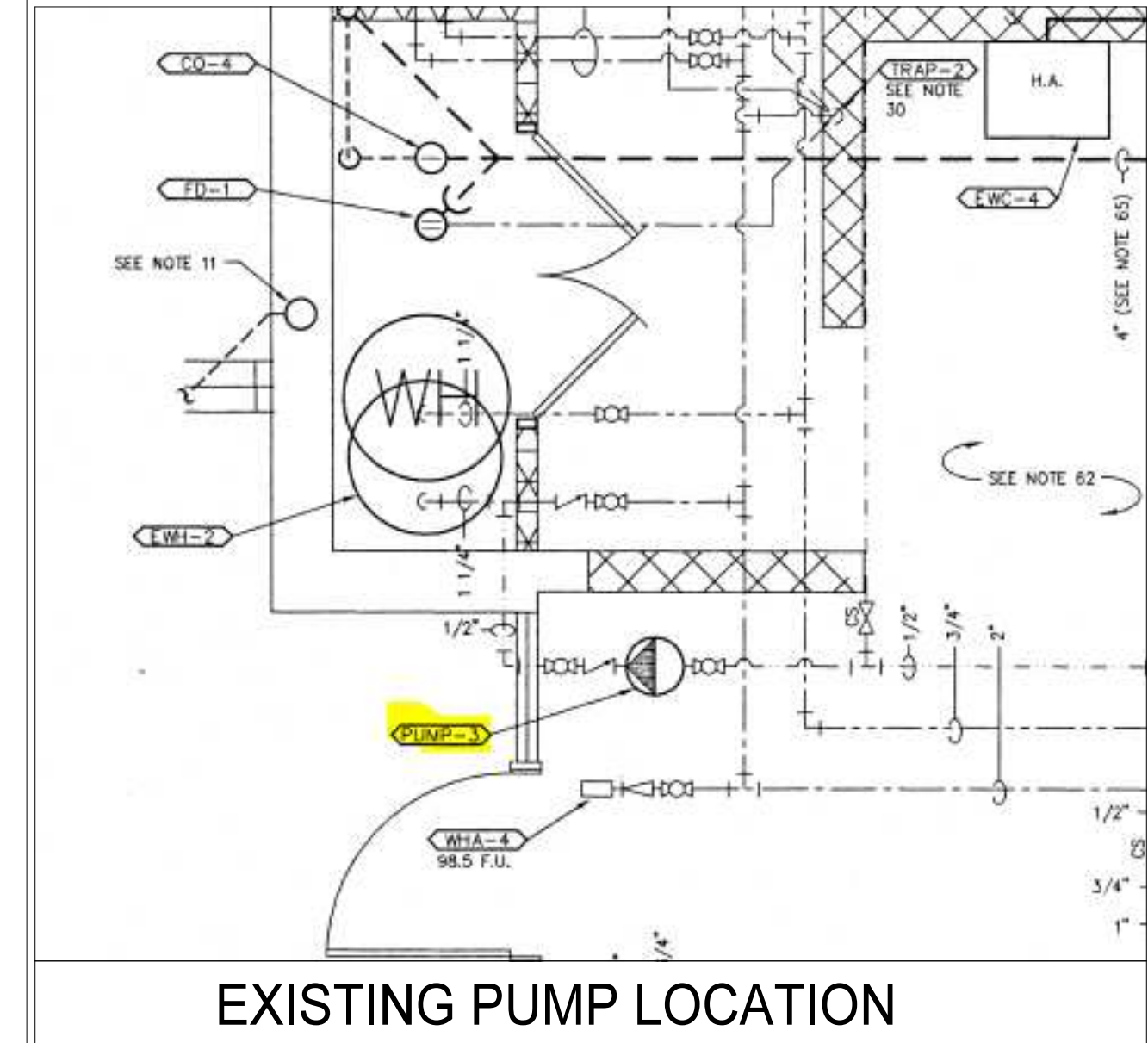
1. THIS ACCESSIBLE FIXTURE, ACCESSORIES, AND INSTALLATION SHALL CONFORM TO THE USBC AND ASAD ADA STANDARDS FOR ACCESSIBLE DESIGN.
2. LOCATE FLUSH ACTUATORS ON WIDE SIDE OF STALLS OR APPROACH AREAS.
3. PROVIDE ASSE-1070 CERTIFIED MIXING VALVE BELOW FIXTURE ACCESSIBLE BUT CONCEALED FROM VIEW.
4. PROVIDE SINK WITH REMOVABLE GRID STRAINER IN LIEU OF "PERFECT DRAIN".
5. PIPE FAUCET WITH TYPE L COPPER IN LIEU OF PROVIDED PEX.

ELECTRIC WATER HEATER SCHEDULE												
TAG	BASIS OF DESIGN		LOCATION	CAPACITY (GALLONS)	RECOVERY RATE (GPH)	TEMPERATURE RISE (°F)	TEMPERATURE SETTING (°F)	INPUT RATE (KW)	ELECTRICAL DATA			NOTES
	MANUFACTURER	MODEL							VOLTAGE	PHASE	HERTZ	
EVH	LOCHINVAR	LDT-30	MECHANICAL ROOM	LDT-50	30	60	120	4.5 DUAL	208	1 PH	60	1,2,3

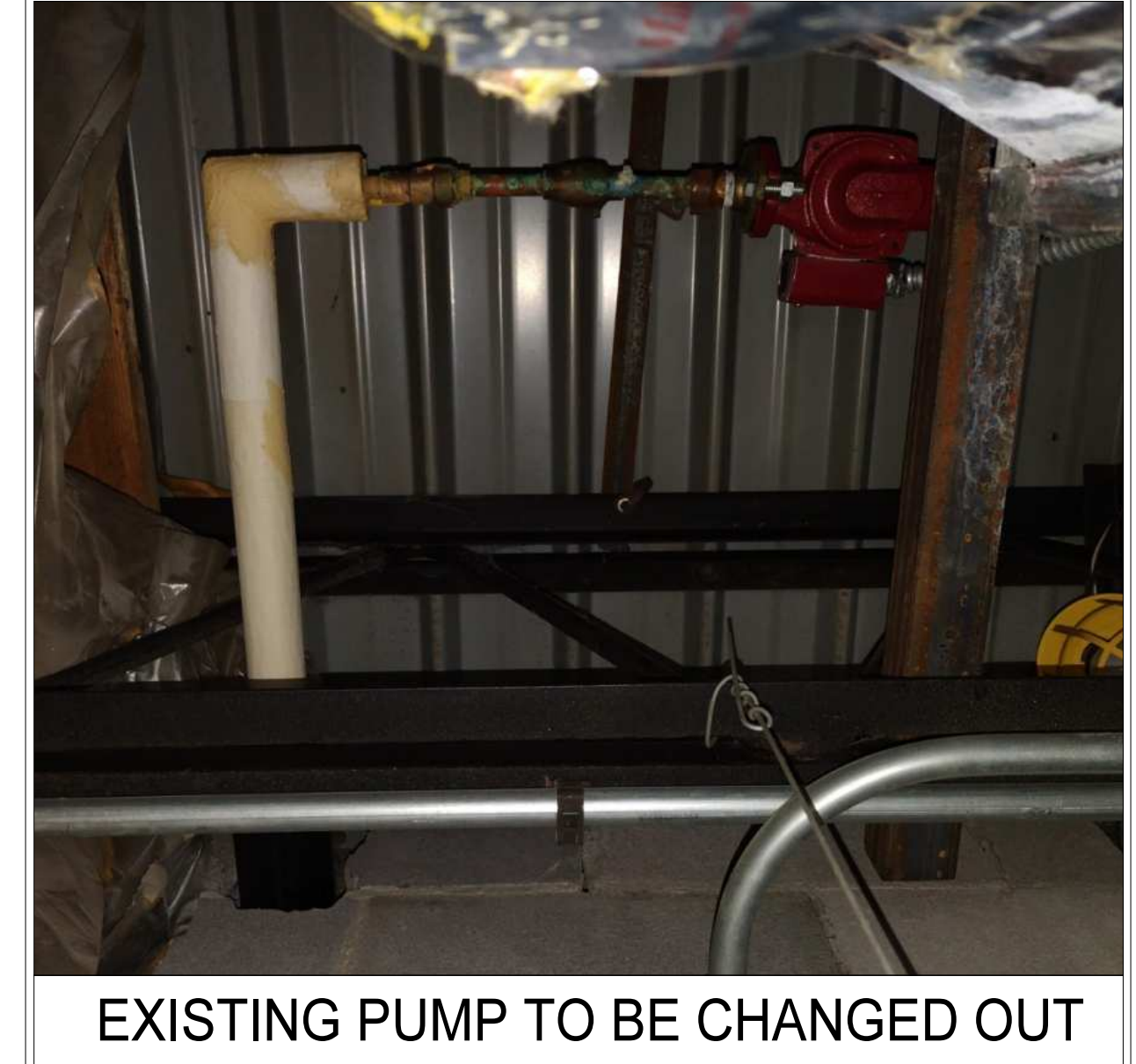
1. KW INPUT RATE FOR ELECTRIC WATER HEATERS BASED ON FULL LOAD SIMULTANEOUS OPERATION.
2. PROVIDE PARALLEL INSTALLATIONS WITH PRECISION CUT EQUAL LEG PIPING. REVERSE-RETURN MANIFOLD PIPING OR MANUFACTURER'S MANIFOLD INSTALLATION KIT. REFER TO MANUFACTURER'S INSTALLATION REQUIREMENTS AND RECOMMENDATIONS.
3. EXISTING LOW-BOY TO BE REPLACED WITH NEW FULL-SIZE COMMERCIAL UNIT.

TANK SCHEDULE												
TAG	BASIS OF DESIGN		LOCATION	SYSTEM TYPE	TANK TYPE	OPERATING DATA			ASME CODE CONSTRUCTION (YES / NO)	CONNECTION SIZE		NOTES
	MANUFACTURER	MODEL				CAPACITY (GAL)	ACCEPTANCE (GAL)	AIR PRE-CHARGE PRESSURE (PSI)		INLET (IN)	OUTLET (IN)	
EX	AMTROL	ST-5C	MECHANICAL ROOM	DOMESTIC H2O	INLINE THERMAL EXPANSION	2	0.5	55	YES	1/2"	1/2"	1

1. REFER TO MANUFACTURER'S RECOMMENDATIONS FOR FINAL PIPING ARRANGEMENT. PROVIDE EQUAL LEG PIPING FOR INLETS AND OUTLETS OF MANIFOLDED STORAGE TANKS TO PROVIDE EVEN DISTRIBUTION AND DRAWOFF.



EXISTING PUMP LOCATION



EXISTING PUMP TO BE CHANGED OUT

PUMP SCHEDULE						
MARK	GPM	HD	HP	RPM	VOLT/PH/Hz	B&G MODEL
P-1	70	15FT	3/4	1750	480/3/60	60-2AA
P-2	70	40FT	2	1750	480/3/60	80-2x2x7

RECORD DRAWING SCHEDULE



PROJECT NO:	630401
DATE:	December 20, 2023
REVISIONS	
DATE	DESCRIPTION
3/6/2024	AD 02

AD 02