



**ADDENDUM NO. 2**

**DATE: 5-1-2024**

**TO: ALL BIDDERS**  
**FROM: JKF ARCHITECTURE**  
**RE:** Pitt Community College New Welding Building  
Project No. 2022-07

The following corrections, clarifications, or supplemental information is to be incorporated into the Contractor(s) bid to perform the Work:

**CLARIFICATIONS:**

1. Required roof drain clean-outs are shown on Drawing C3.2.
2. All storm drain inlets require soil erosion protection.
3. Geofabric will only be required if recommended by Testing Agency with the approval of the Architect at Unit Pricing.
4. Reference Drawing A4.3 dated 2-15-2024; Miscellaneous steel columns and angle framing to support utilities for the Welding booths shown in Isometric Drawing are by a steel fabricator, not part of the Welding Booth. This shall be included in the Base Bid.
5. Fire lane construction will be as noted on C1.2; VOLUME 1; dated 2-15-2024, comprised of concrete and sod as noted over 8" CABC with unyielding subgrade.
6. Regarding conduit in Welding areas, Welding is not considered corrosive, therefore Specification Section 260545, Paragraph C.2.b.1 is not applicable.
7. See attached Addendum #2 from Atlantec Engineers dated 4-26-2024 (4 Pages).
8. Regarding storm sewer design, there are no fared end sections required if not shown. The new waterline across Warren Drive is intended to be installed via open cut, not bored.
9. No floor drains are required for Emergency Eyewash stations.
10. Drawing P1.1, Plumbing Key Note 1.2 is part of the Base Bid.
11. Regarding Alternate #8;
  - a. There is no soffit material. It is all exposed painted steel.
  - b. There is no drainage. Roof is structurally sloped to drain to one side.

**CHANGES TO DRAWINGS:**

1. Drawing A3.2 dated 2-15-2024; Material Keying Legend; Add; 321313.A2 – Concrete Paving, 7" Thick. This thickness is under the entire canopy as well as the yard to the north as indicated on Civil Drawings.
2. Drawings S1.2 and S1.4 dated 2-15-2024:
  - a. Change the gridline labeled as "J" to gridline "I".
  - b. After updating gridlines please change the dimension between gridline "H" and gridline "I" to 12' – 1".
  - c. Update the dimension between gridline "I" and gridline "K" to 11' – 11".

- d. On drawing S1.4, between column grids P & M along gridlines 6 & 7, the steel beam size is W8x10.
3. Delete Drawing E7.1 dated 2-15-2024; Add Drawing E7.1; Revision #1; dated 4-24-2024 (1 Page)
4. See attached Sketch from Rivers & Associates dated 5-1-2024 modifying Fire Line and Hydrant locations shown previously on Drawing C2.2, dated 2-15-2024 (1 Page).

### **CHANGES TO SPECIFICATIONS**

1. In Addendum #1, change referenced Specification Section in Item #9 in Changes to Specifications from "Section 231113" to "Section 232100".
2. Specification Section 074243 dated 2-15-2024; Delete Paragraph 2.2.B.3.b including sub-paragraphs.
3. Specification Section 076200 dated 2-15-2024; Paragraph 3.4.C.5; add "with pre-manufactured square to round transition booth with draw band."
4. Specification Section 101419; dated 2-15-2024; Paragraph 2.2.A.3; Change to "Provide 10" High letters mounted to face brick in location to be determined by Architect. Provide the following text...NEW WELDING & TECHNOLOGY BUILDING. Final text to be confirmed by Architect. Contractor shall provide all low voltage wiring, transformers (concealed above adjacent ceiling), and dedicated electrical circuit, wiring, and conduit for complete installation. Location will be on the East Elevation on one side of the entry doors as determined by the Architect."
5. Specification Section 119000 revised Addendum #1 dated 4-23-2024; change added Paragraph 2.1.C to "Welding Booth to manufactured by Clean Air Industries, Inc. (Basis of Design), or equal by Air Purification Incorporated or Lincoln Electric."
  - a. Add Paragraph "2.2.B.6- Provide vinyl pre-sized transparent screen 14 mil welding curtain, FM approved, grommets on 12 O.C. all sides, and manufacturer's standard hanging rod, at each booth.
  - b. Paragraph 2.2.C.6; Change "460VAC, 230VAC, or 208VAC" to "480VAC".
6. Specification Section 084523 dated 2-15-2024; Paragraph 2.2.A.1; add subparagraph "d. Kingspan Light + Air".

### **END OF ADDENDUM NO. 2 (TOTAL NUMBER OF PAGES = 8)**

#### Attachments:

1. As Noted

#### xc:

- All Bidders
- Glenn Sheppard
- Ricky Brown
- Brad Felts, PE
- Sujin Promojaney, PE
- Kevin Roomsburg, PE
- Steve Janowski, PE
- Plan Rooms

April 26, 2024

JKF Architecture  
625 Lynndale Court, Ste. F  
Greenville, NC 27858

RE: Pitt Community College  
New Welding Building  
Addendum #2

SCO #: 22-25191-01A  
NCCCS #: 2675

Dear John,

Please distribute the following items in response to questions as part of your next addendum. The bidders are hereby informed that the following additions, deletions, changes and/or clarifications supersede and supplement the contract documents for the referenced project.

1. Sheet P0.0, General Note 18 – Vent, Sewer, Storm and Condensate pipe below slab shall be Schedule 40 PVC. Vent, Sewer, Storm and Condensate pipe above slab shall be service weight cast iron.
2. Sheet M1.1, Robotics Lab – Hoods over robotics equipment shall be provided and installed by the mechanical contractor. The hoods shall be formed from 16 ga. galvanized steel 10" tall side panels and frame with polycarbonate panels to form the roof. Weld curtains shall be provided on all four sides. See M4.2 detail J5 for additional information and basis of design.
3. Sheet M6.1, detail E18 – Contractor shall provide carbon dioxide sensor integral to temperature sensor for all classroom spaces for use in demand control ventilation sequence.
4. Sheet M4.2, detail J5 – Robotics Hood and Filtration Detail. Filtration assembly shall come with factory installed sound deadening to reduce noise levels from 74 dB to 61 dB with clean filters. Contractor shall coordinate power, compressed air and fire sprinkler connections between trades. Contractor shall field install emergency pull station to activate the fire suppression system for the filtration system. System is designed for 20 hp at 480/3 main blower. Unit shall have single point electrical connection with heavy duty fusible disconnect mounted external to the cabinet on the wall.
5. Specification 235116 Boilers – Fulton Endura EDR-750 is an acceptable Manufacturer and Make.

6. The following sheets shall be substituted for the those in the bid set
  - a. E7.1: Detail A18 revised
7. The following information shall be added to or replaced as indicated to the following details:
  - a. Detail A18/E4.1: The following notes shall be added to the detail:
    2. MCC IS INSTALLED ON 4" CONCRETE PAD. E.C. SHALL VERIFY SUCH THAT NO OPERATING HANDLES, SWITCHES AND PUSH BUTTON ARE LOCATED HIGHER THAN 6'-7" (NEC 404.8).
  - b. Detail A18/E4.2:
    - i. Switchboard MSB Schedule: The following information shall replace the switchboard electrical requirements:

ELECTRICAL REQUIREMENTS:

1. RATING:  
2500A MINIMUM BUS SIZE  
2500A MAIN CIRCUIT BREAKER WITH LSIG ELECTRONIC TRIP UNIT  
65 K MINIMUM AIC RATING  
FREE STANDING NEMA 1 ENCLOSURE WITH FRONT ACCESS ONLY  
GROUND BAR
2. BRANCH BREAKER REQUIREMENTS:  
ALL BRANCH BREAKERS SHALL BE PROVIDED WITH LSIG ELECTRONIC TRIP UNIT.
3. BREAKER SETTINGS:  
E.C. SHALL PROVIDE COORDINATION STUDY FOR ALL BREAKER SETTINGS IN THE SWITCHBOARD. SUBMIT THE COORDINATION STUDY TO ENGINEER FOR APPROVAL AS REQUIRED.
4. ACCESSORIES REQUIREMENTS:
  - a. POWER METERING (VOLT, AMP, KVA, KW, POWER FACTOR, PEAK DEMAND) WITH BACNET MS/TP INTERFACE.
  - b. 240KA SURGE PROTECTION (L-L, L-G, L-N, N-G) WITH SURGE COUNTER.

- ii. Panel H1 Schedule: Add 3 – 20A/1P spare breakers.
  - iii. Panel H2 Schedule: Add 3 – 20A/1P spare breakers.
  - iv. Panel P1 schedule: Add 6 – 20A/1P spare breakers
  - v. Panel P2A schedule: Add 5 – 20A/1P spare breakers
- c. Detail A18/E4.3:
- i. Panel H3 schedule: Add 3 – 20A/1P spare breakers
  - ii. Panel P3 schedule: Add 6 – 20A/1P spare breakers
  - iii. Panel P5 schedule: Add 3 – 20A/1P spare breakers
  - iv. Panel LP1A schedule: Add 6 – 20A/1P spare breakers
  - v. Panel LPXA schedule: Add 6 – 20A/1P spare breakers
- d. Detail A18/E4.4:
- i. Panel LP2A schedule: Add 3 – 20A/1P spare breakers
  - ii. Panel LP4A schedule: Add 6 – 20A/1P spare breakers
  - iii. Panel LP5 schedule: Add 4 – 20A/1P spare breakers
- e. Detail F18/E5.1: The following information shall replace the detail as follows:
- New underground fiber optic in communication service conduits shall be from DATA 106 to existing manhole (with campus fiber optic pass-through) near road. See revised detail A18/E7.1 for location. Wiring to existing Russell building is not required.
- One new manhole is required between the building and the existing manhole. Field coordinate with college IT department to provide connection at the existing manhole. Terminate fiber optic cable from the building at the existing manhole per the college IT department instruction.
- Contractor shall provide protection for all existing installation inside the existing manhole during construction. Any damage to existing installation is the contractor responsibility.
- f. Detail A18/FA0.0:
- i. Required BDA monitor modules in riser diagram shall be 8.
  - ii. Required BDA monitor functions in matrix shall be:
    - BDA SYSTEM: LOSS AC POWER
    - BDA SYSTEM: BATT. CHARGER FAILURE
    - BDA SYSTEM: DONOR ANTENNA MALFUNCTION
    - BDA SYSTEM: RF DEVICE FAILURE
    - BDA SYSTEM: OSCILLATION OF RF DEVICES
    - BDA SYSTEM: ACTIVE SYTEM FAILURE

BDA SYSTEM: LOW BATTERY

BDA SYSTEM: COMM. LINK

g. Fire Alarm Legend/FA0.0:

i. The mounting height for wall devices shall be as follows:

Pull Station:	Mount top of box 48" A.F.F.
'AHU SHUTDOWN DEFEAT:	Mount top of box 48" A.F.F.
FIRE ALARM STROBE/HORN (wall):	Mount bottom of box 92"
FIRE ALARM STROBE (wall):	Mount bottom of box 92"
FIRE ALARM REMOTE ANNUNCIATOR:	See detail J12/FA0.0.

ii. Add note:

NOTE:

1. FOR WALL MOUNTED DEVICES, SEE DETAIL M13/A8.1 FOR TYPICAL MOUNTING HEIGHT. CONFIRM MOUNTING HEIGHT WITH ARCHITECT PRIOR TO START WORK.

h. Detail J18/FA0.0:

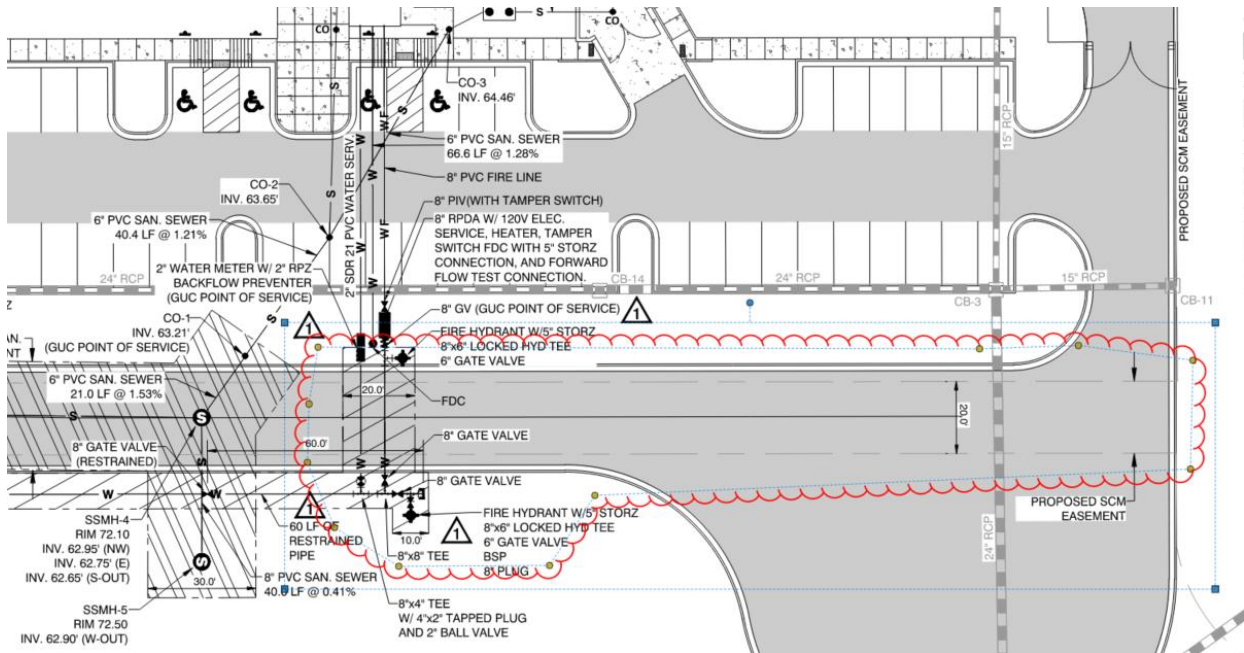
Required BDA monitor modules in BDA diagram shall be 8.

i. Detail A18/FA0.0:

Required BDA monitor modules for BDA system shall be 8.

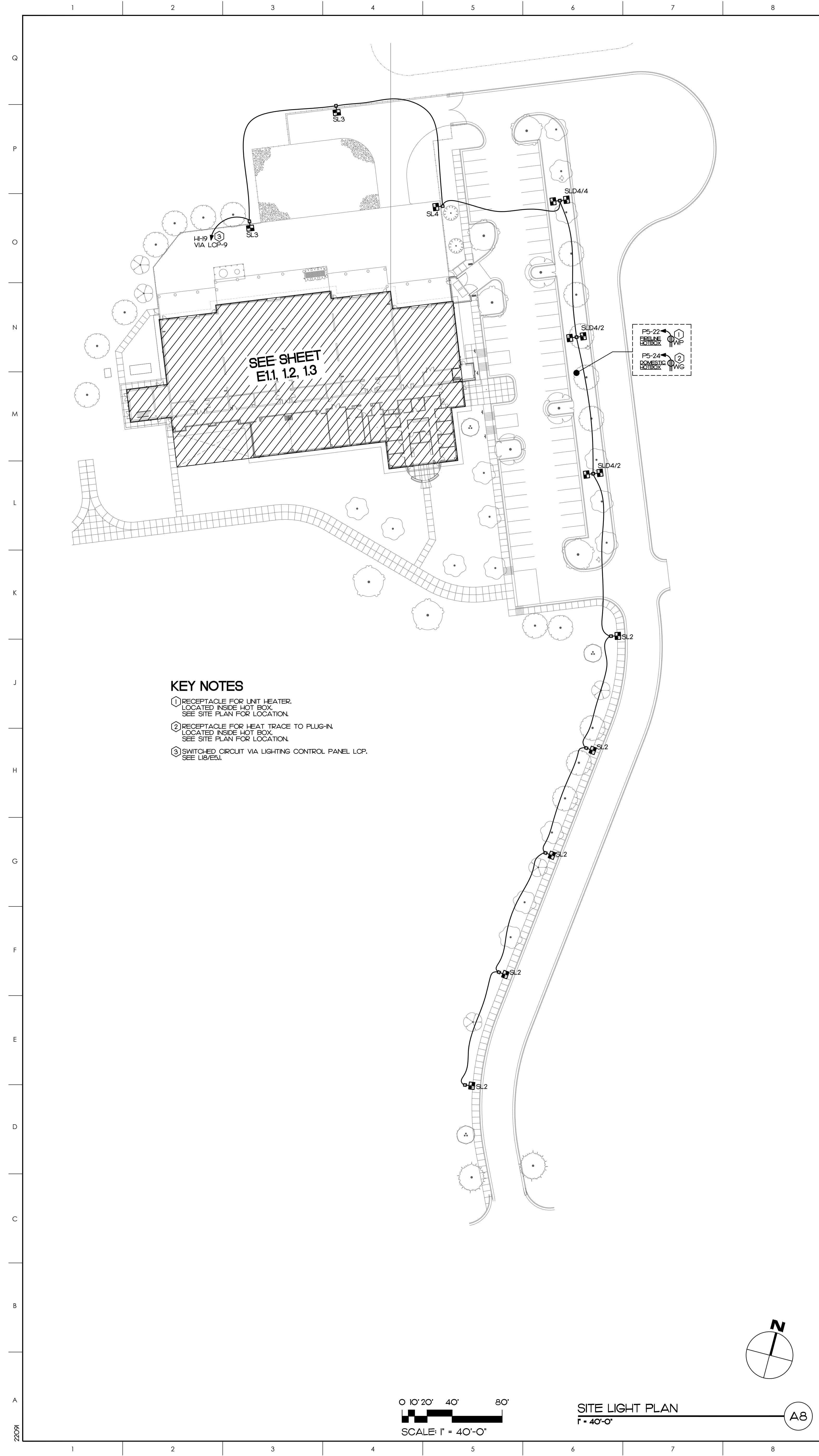
**PITT COMMUNITY COLLEGE WELDING BUILDING  
WATERLINE REVISION  
5-1-24**

Greenville Utilities Commission required the removal of the waterline and relocation of fire hydrant to the proposed water service in order to eliminate water quality problems at the end of the line. The coverage was adequate with the fire hydrant relocation.

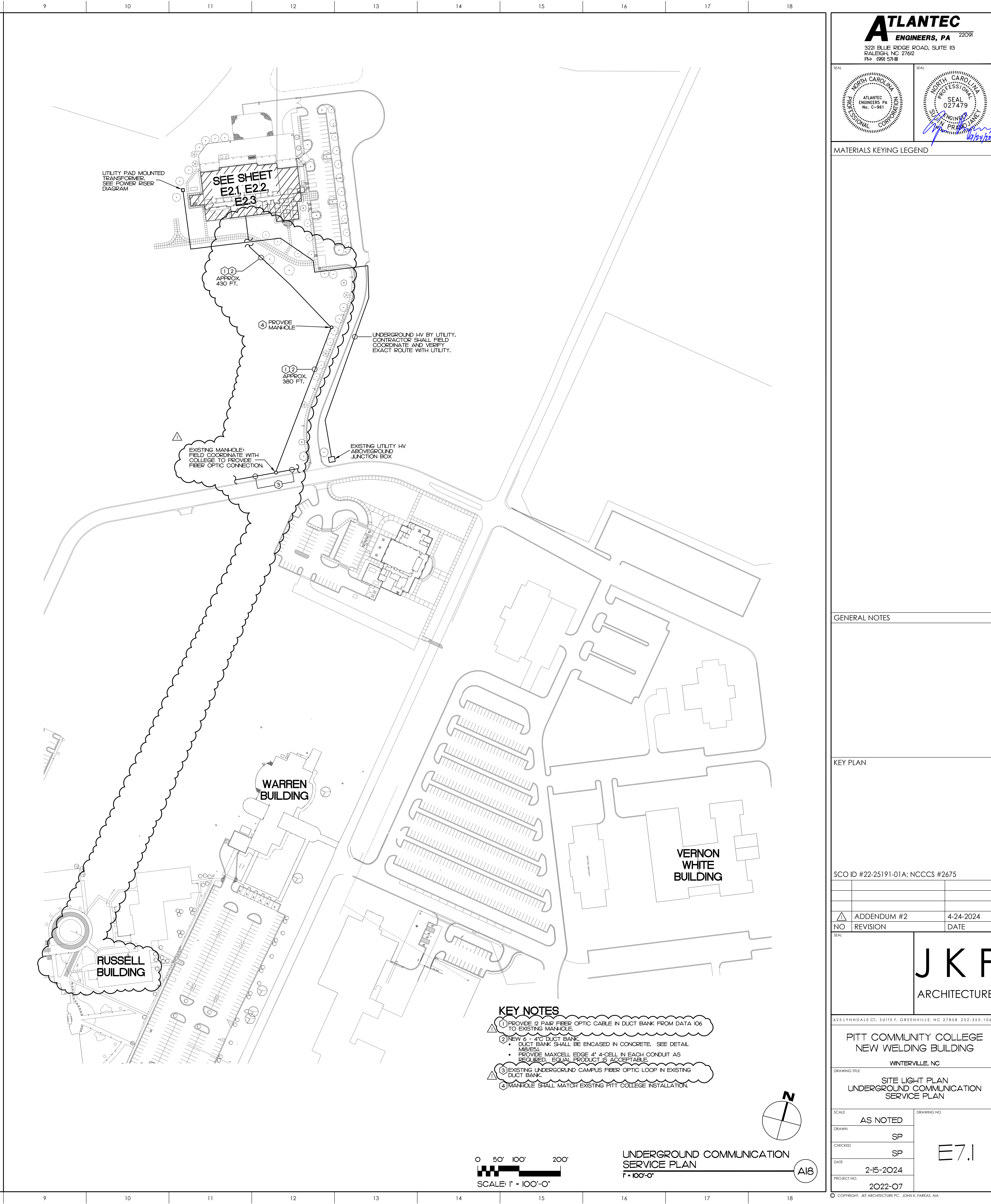


Since  
**1918**





- KEY NOTES**
- ① RECEPTACLE FOR UNIT HEATER. LOCATED INSIDE HOT BOX. SEE SITE PLAN FOR LOCATION.
  - ② RECEPTACLE FOR HEAT TRACE TO PLUG-IN. LOCATED INSIDE HOT BOX. SEE SITE PLAN FOR LOCATION.
  - ③ SWITCHED CIRCUIT VIA LIGHTING CONTROL PANEL LCP. SEE L16/EN1.



- KEY NOTES**
- ① PROVIDE 12 PAIR FIBER OPTIC CABLE IN DUCT BANK FROM DATA 106 TO EXISTING MANHOLE.
  - ② NEW 6 - 4" DUCT BANK. DUCT BANK SHALL BE ENCASED IN CONCRETE. SEE DETAIL M16/EN1. PROVIDE MAXCELL EDGE 4" 4-CELL IN EACH CONDUIT AS PROVIDED. EQUAL PRODUCT IS ACCEPTABLE.
  - ③ EXISTING UNDERGROUND CAMPUS FIBER OPTIC LOOP IN EXISTING DUCT BANK.
  - ④ MANHOLE SHALL MATCH EXISTING PITT COLLEGE INSTALLATION.

**ATLANTEC ENGINEERS, PA**  
 322 BLUE RIDGE ROAD, SUITE 113  
 RALEIGH, NC 27612  
 PH: 919 571-1111

SEAL: [Professional Engineer Seal for North Carolina, License No. 027479]

**MATERIALS KEYING LEGEND**

NO.	REVISION	DATE

**GENERAL NOTES**

NO.	REVISION	DATE

**KEY PLAN**



SCO ID #22-25191-01A; NCCCS #2675

NO.	REVISION	DATE

**J K F ARCHITECTURE**

425 LYNDALE CT., SUITE F, GREENVILLE, NC 27658 252-355-1048

**PITT COMMUNITY COLLEGE  
 NEW WELDING BUILDING**  
 WINTERVILLE, NC

SCALE	DRAWING NO.
AS NOTED	
DRAWN: SP	
CHECKED: SP	
DATE: 2-15-2024	
PROJECT NO: 2022-07	

**E7.1**