



ADDENDUM NO. 1

DATE: 5-28-2024

TO: ALL BIDDERS
FROM: JKF ARCHITECTURE
RE: Lenoir Community College New Aviation Center for Excellence
Project No. 2022-18

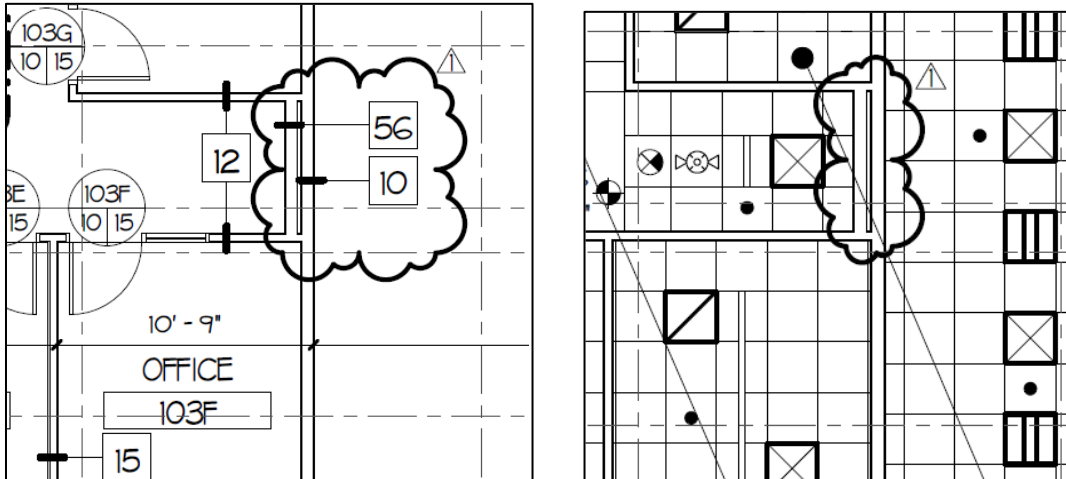
The following corrections, clarifications, or supplemental information is to be incorporated into the Contractor(s) bid to perform the Work:

CLARIFICATIONS:

1. See attached Minutes of Pre-Bid Meeting, held 5-22-2024, (6 Pages), including Sign-in Pages.
2. See attached Adendum #1 from Atlantec Engineers, dated 5-28-2024 (3 pages).
3. Roof drains are tied into roof leaders which combine to tie into the locations noted on Drawing C2.1. Roof drains are also clearly shown on Plumbing Fixture Schedule.

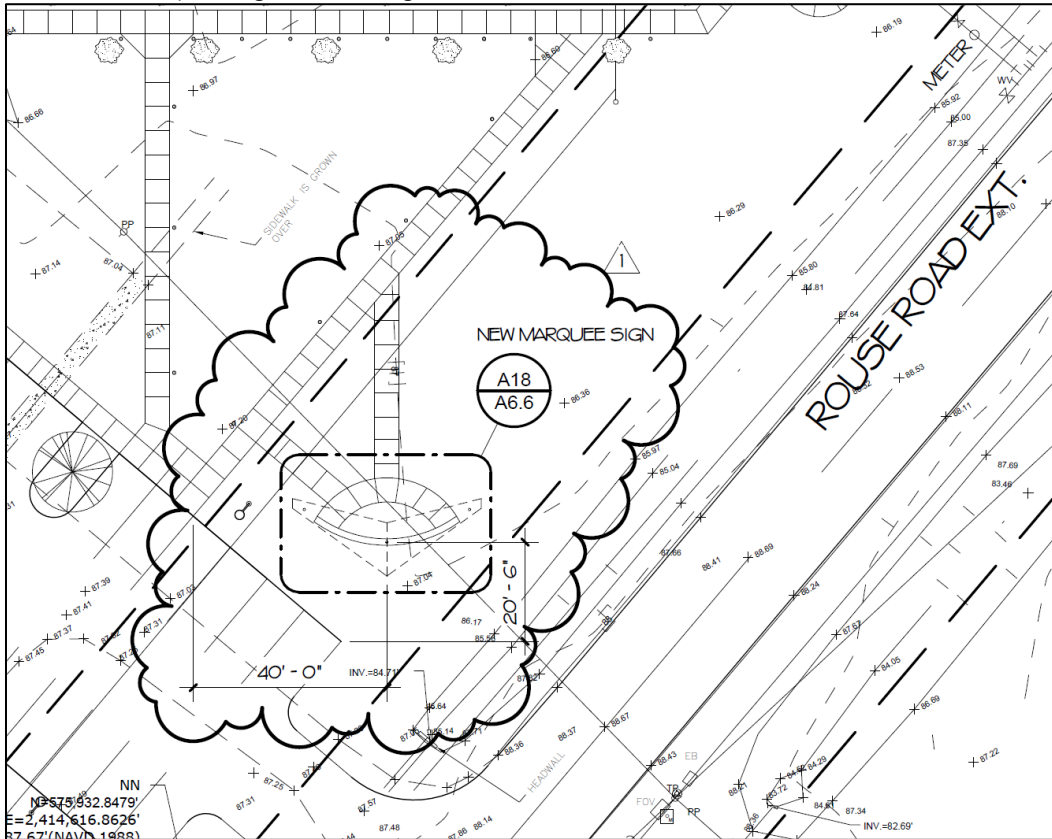
CHANGES TO DRAWINGS:

1. Drawing A1.11 and Drawing A5.11, dated 2-28-2024; Add 6" stud wall as follows:

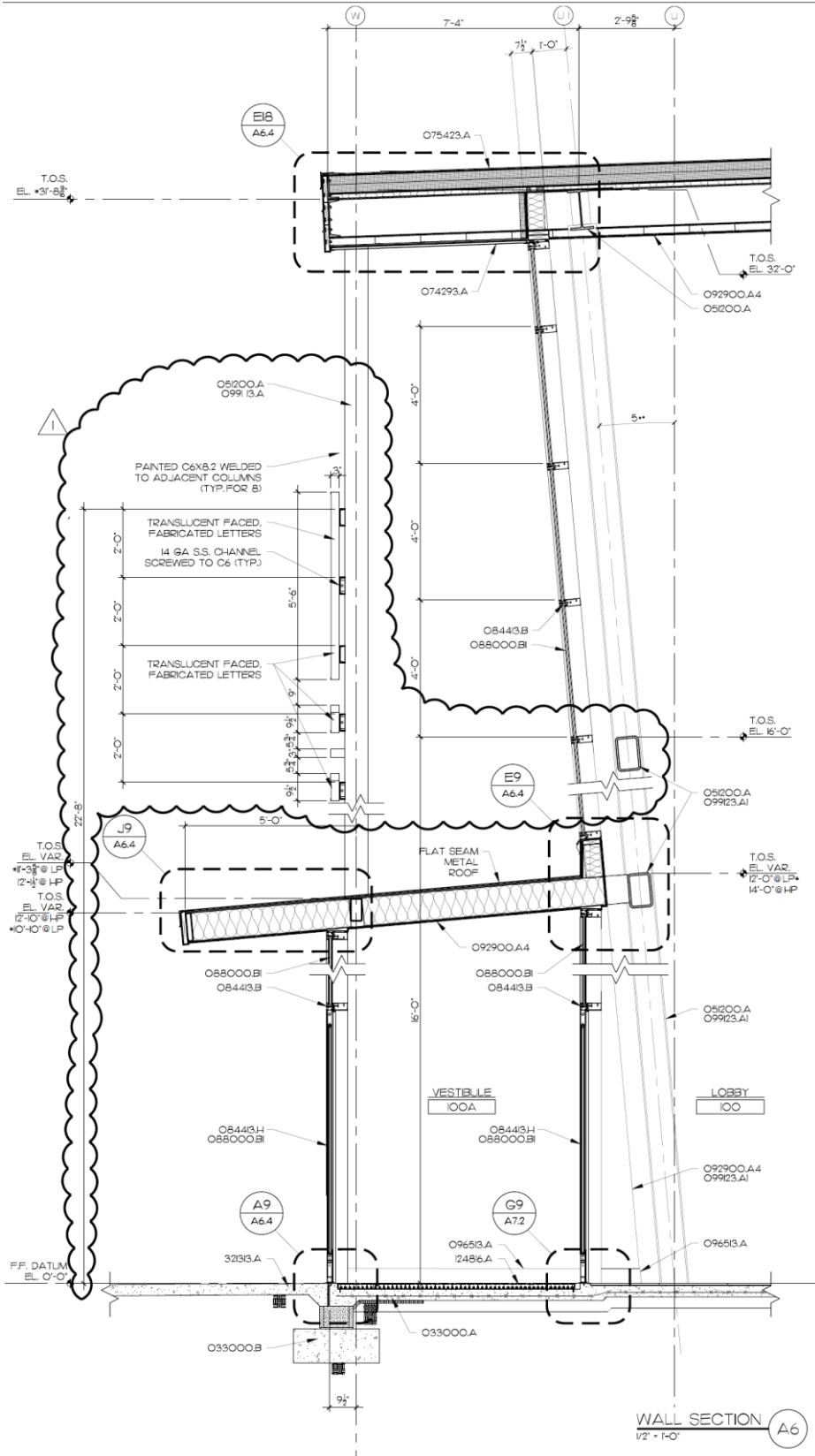


2. Drawing A1.12, dated 2-28-2024; At Door COR3, provide 6'-0" wide by 6'-0" deep Entrance Floor Grille per Specification Section 124816.
3. Add Drawing C2.2, dated 2-28-2024 (1 Page).

4. Add New Marquee Sign to Drawing ASP1.1, dated 2-28-2024 as follows:



5. Add Drawings A6.6, dated 2-28-2024 (1 Page).
6. Drawing A8.1, dated 2-28-2024; FRAME TYPES; Bottom two lites that are shaded are to be 1/4" tempered frosted glass.
7. Large Scale Plan J18 on Drawing A4.1, dated 2-28-2024; Room Lounge 214; Add Elevation Tag referencing Interior Elevation E14 on A4.2 SIM TO OPP HAND. Provide 2 finished end panels.
8. Drawing A2.1, dated 2-28-2024; Elevations G18 and M18; Change large letter on elevations from the noted painted sign and vinyl letters, to a 1/16" thick painted metal panels faced screwed to wall panels. Maximize panel size to freastest extent possible. Allow multiple custom colors to be provided at later date. Letters are 13'-6" high by approximately 28'-0".
9. Drawing A9.11 and Drawing A9.21, dated 2-28-2024; Change Room Finish Tags B1 and B2, Floor finish from "RT" to "T".
10. Drawing A3.3 dated 2-28-2004; Revise Wall Section A6 as follows:



CHANGES TO SPECIFICATIONS

1. Specification Section 087100; dated 2-28-2024; Paragraph 2.6.F.1; add Paragraph "d. Allegion/Schlage".
2. Specification Section 096513, dated 2-28-2024; Add Paragraph 2.4:

2.4 RUBBER STAIR ACCESSORIES (RT)

- a. Stair Treads: ASTM F2169.
 - i. Type: TS (rubber, vulcanized thermoset) or TP (rubber, thermoplastic).
 - ii. Class: 2 (pattern; embossed).
 - iii. Nosing Style: Square, adjustable to cover angles between 60 and 90 degrees.
 - iv. Nosing Height: 2 inches.
 - v. Thickness: 1/4 inch and tapered to back edge.
 - vi. Size: Lengths and depths to fit each stair tread in one piece.
 - vii. Integral Risers: Smooth, flat; in height that fully covers substrate.
 - b. Separate Risers: Smooth, flat; in height that fully covers substrate; produced by same manufacturer as treads and recommended by manufacturer for installation with treads.
 - i. Style: Toeless, by length matching treads.
 - ii. Thickness: 0.125 inch
 - c. Landing Tile: Matching treads; produced by same manufacturer as treads and recommended by manufacturer for installation with treads.
 - d. Colors and Patterns: As selected by Architect from full range of colors.
3. Specification Section 122113, dated 2-28-2024; Change Paragraph 2.2.C.3.a to "Cordless Modules: Lift cord is wound inside the module. Steel spring provides tension to pull the blind up. Lift cord color is white." Change Paragraph 2.2.C.3.b to "Bottom rail lock-lift system."
 - a. Add to Paragraph 2.2.B.6; Provide a blind for each horizontal section of window dividing at the vertical mullions.
 - b. Add Paragraph 2.2.B.7: Provide blinds at SF1 and SF2.
 - c. W2 Window, 2nd Floor, Rear Lobby, Corridor 5; between Column Lines 23-24 shall not receive a window blind.
 4. Specification Section 101419, dated 2-28-2024; Delete Paragraph 2.2.A in its entirety.
 5. Specification Section 101419, dated 2-28-2024; Paragraph 2.2.B is for New Marquee Sign noted on ASP1.1.
 6. Specification Section 101419, dated 2-28-2024; Add Paragraph 2.2.C as follows:

- c. Fabricated Channel Characters (Front Entry Sign: Translucent face with metal side returns and back panel, formed free from warp and distortion; with uniform faces, sharp corners, and precisely formed lines and profiles; internally braced for stability, to meet structural performance loading without oil-canning or other surface deformation, and for securing fasteners; and as follows.
 - i. Illuminated Characters: Frontlighted character construction with LED lighting, including transformers, insulators, and other accessories for operability, with provision for servicing and concealing connections to building electrical system. Use tight or sealed joint construction to prevent unintentional light leakage. Space lamps apart from each other and away from character surfaces as needed to illuminate evenly.
 1. Power: 120 V, 60 Hz, 1 phase, 15.
 2. Weeps: Provide weep holes to drain water at lowest part of exterior characters.
 - ii. Character Material: Sheet or plate aluminum.
 - iii. Material Thickness: 0.100 inch.
 - iv. Translucent Face Sheet: Acrylic sheet with integral color matching Architect's samples.
 1. Sheet Thickness: 0.125 inch.
 - v. Finishes:
 1. Baked-Enamel or Powder-Coat Finish: Manufacturer's standard, in color [as indicated by manufacturer's designation] matching Architect's sample
 - vi. Mounting: As indicated on Drawings.
 - vii. Typeface: As indicated.
7. Delete Specification Section 323113 in its entirety. Drawing ASP1.1, dated 2-28-2024; delete all reference to Chain-link Fencing and refer to Drawing C1.1 for extent of fencing and Drawing C5.4 for fence details.

END OF ADDENDUM NO. 1 (TOTAL NUMBER OF PAGES = 16)

Attachments:

1. As Noted

xc:

- All Bidders
- Debra Sutton
- Matthew Briley, PE
- Jim Delpapa, PE
- Kevin Roomsburg, PE
- Marty Wynn, PE
- Plan Rooms

file: a:\projects-2022\2022-18\111-001.docx



Minutes of Pre-Bid Meeting:

Meeting Date: May 22, 2024
Location: Lenoir Community College Administration Building Board Room
RE: **LENOIR COMMUNITY COLLEGE
NEW AVIATION CENTER FOR EXCELLENCE
SCO ID #22-253264-02A**
JKF Project No.: 2022-18
Date Prepared: May 22, 2024
Attendees: See attached Sign-in Sheet

Discussion:

- 1) John K. Farkas, AIA (JKF) of JKF Architecture provided introductions and conducted the Pre-Bid Conference. The Owner's representatives included Deborah Sutton, VP of Administration.
- 2) JKF noted this was not a Mandatory Pre-Bid Conference for Bidders.
- 3) In accordance with General Statute GS 133-3, Specifications may list one or more preferred brands as an alternate to the base bid in limited circumstances. Specifications containing a preferred brand alternate under this section must identify the performance standards that support the preference. Performance standards for the preference must be approved in advance by the owner in an open meeting. Any alternate approved by the owner shall be approved only where (i) the preferred alternate will provide cost savings, maintain or improve the functioning of any process or system affected by the preferred item or items, or both, and (ii) a justification identifying these criteria is made available in writing to the public. In accordance with GS133-3 and SCO procedures the following preferred brand items are being considered as Alternates by the owner for this project:
 - a) Door Hardware- Corbin-Russwin.
 - b) Simplex Fire Alarm System.
 - c) Tridium-Niagra Building Systems
 - d) APCO Signs
- 4) The floor was opened for any questions, discussions, or objections related to preferred alternates. There were none. JKF closed discussion on this matter.
- 5) JKF reviewed Notice to Bidders including access to Bid Documents through JKF Architecture.
- 6) JKF reviewed Form OC-15 Instructions to Bidders and General Conditions of the Contract, Supplementary Conditions including Liquidated Damage requirements.
 - a) OC-15, Article 10e, confirms requirements for permitting to be included. GC is responsible for all permits. Lenoir County Inspections is AHJ. Planning & Zoning is not required. Soil Erosion Permit is approved. See also 10.b for inclusion of tap and utility fees.

MAY 22, 2024

LENOIR COMMUNITY COLLEGE AVIATION PRE-BID CONFERENCE

PAGE 2

- 7) JKF reviewed Guidelines for Recruitment and Selection of Minority Businesses for Participation in State Construction Contracts.
 - a) Attendees were advised to review all MBE requirements and expectations as well as the proper bid documents to be submitted with Bid. All required forms are already in the specification.
 - b) Bidders shall review the Contract documents for cancellation clauses for insurance required by the State of North Carolina without exception. They are noted in the General Conditions.
 - c) **The Bid Opening** will be in the same room as the pre-bid, **Administration Board Room**.
- 8) JKF reviewed the Summary of Work, Section 011000.
- 9) Section 011000 reviewed. 1.5.C.1, add Cameras to the list of OFCI. All wiring is to be included for all devices shown on the Contract documents.
- 10) Reviewed Allowances (1) and Alternates (4). Bidder noted that the Alternate Specification was incorrect. JKF to review and re-issue.
- 11) JKF reviewed Form of Proposal. Noted Bidders must complete all information required on the forms and properly execute the document. Read the complete requirements noted on the Bid Form for Minority Participation requirements and the forms that are to be submitted. Reviewed all the MBE Forms included in the Manual. WMBE goal is 10% for the State.
- 12) JKF reviewed the Bid Bond, Form of Construction Contract draft, and Sales Tax Forms. Bid Bond must be State Form **not** AIA Bid Bond.
- 13) JKF noted this project is permitted by Lenoir County Inspections. State Construction Office will assign a monitor to the project. Contractors should be familiar with SCO project inspection procedures and requirements. Everything must be inspected by the Design Team in addition to the AHJ. Nothing gets covered up without the approval of the Architect.
- 14) No CADD files will be provided to any bidder, sub, vendor during the bid period. A basic CADD file will be provided to the contracted bidder at the appropriate time. The contractor is responsible for coordination drawings and preparation of shop drawings. No portion of the Contract Documents shall be copied and resubmitted as a shop drawing as that will be a copyright violation.
- 15) JKF noted that all questions shall be directed to his attention. E-mails are acceptable. JKF's e-mail is jkf@jkf-arch.com. All questions are to be submitted in writing. JKF requested contractors submit any and all questions to JKF no later than noon Tuesday, May 28th. The Owner is not to be contacted by any bidders during the bid period.
- 16) JKF noted there are no restrictions on working on the site except as may be required by City of Kinston or Global TransPark Authority Ordinances.
- 17) JKF did a brief overview of the scope and noted the following:
 - a) There will be an Owner's Commissioning Agent on the project. Building will be commissioned per the Contract Documents.
 - b) Construction Testing will be paid for by the Owner. All scheduling of Testing Agency will be through the Architect. The Contractor will not schedule any testing, but request through Architect.
 - c) Coordination Drawings are to be provided by the GC per Section 013100.A of the specification. If not provided, the contractor will be required to correct any coordination items in the field to the satisfaction of the Architect at no cost to the owner.
- 18) Discussed base bid duration. No objections.

- 19) A list of attendees will be attached to the minutes of this meeting and included in Addendum #1.
- 20) Substitution requests were discussed. Substitutions are to be submitted by prime bidders only. No consideration will be given to any subcontractor, vendor, or manufacturer unless it comes through the prime bidder who will review and recommend approval or disapproval. Must be received 14 days prior to bid.
- 21) Owner comments:
 - a) None.
- 22) Bidding Questions:
 - a) None.
- 23) Adjourned. Contractors can visit the site at their convenience.

We believe the foregoing to be an accurate summary of discussions and related decisions. We would appreciate formal, written notification of exceptions to this record within seven (7) days of its release. Failing such notification, we will consider these minutes a matter of record.

Respectfully submitted,



John K. Farkas, AIA LEED-AP
Principal/ Project Architect

xc:

- Deborah Sutton
- Dr. Rusty Hunt
- Jim DelPapa, PE
- Kevin Roomsburg, PE
- David Whitney, PE
- Patrick McCabe, PE
- Matthew Briley, PE
- Brad Felt, PE
- Marty Wynne, PE
- All Bidders, Plan Rooms

Attach:

- Sign-in Sheet

file: a:\projects-2022\2022-18\051-012.docx

SIGN IN SHEET

PROJECT: LEMOIR CC AVIATION CENTER
 MEETING DATE: 05.22.24
 JFK PROJECT NO: 2022-18



NAME	AFFILIATION	PHONE / FAX	E-MAIL
BRIAN FARAS	JKF ARCHITECTURE	(252) 355-1008	Brian@JKF-ARCH.COM
MARK ZIEGLER	JKF ARCHITECTURE	252-355-1068	mzie@JKF-ARCH.COM
MARCY WYNN	AUCON INC.	910-612-6900	MWYNN@AUCON.COM
JIM DEURAPA	ATLANTEC ENGINEERS	919-614-4852	Jim@atlantecengineers.com
Trent King	Group III Mgt.	252-524-7544	tking@groupiii.mgt.com
Ryan Arthur	Group III Mgt	252-917-7971	raarthu@groupiii.mgt.com
Jasper David	Group III Mgt	252-286-8569	jdavid@groupiii.mgt.com
Jackie Johnson	Group III Mgt	252-560-8536	jackie@groupiii.mgt.com
London Battle	Thomas Construction Group	(910) 799-2295	lzbattle@thomasconstructiongroup.com
Eric Green	Baylor Electric	253-335-8994	egreen@baylor.com
Haley Hudson	W ELECTRICAL COMPANY	252-510-87592	haley.hudson@wlectricalcompany.com
Bruce Buss	Fred Smith Company	(919) 352-1337	bruce@fredsmithcompany.net

Phil Long MSS Solutions (252) 230-5494 phil.long@mssolutions.com
 Patrick McCabe Atlantic (919) -655-2024 patrick@atlantecengineers.com
 Matthew Briley Atlantic (119) -955-2022
 625 LYNDALE COURTSUITE F
 MATTHEW BRILEY
 252-355-1068 (OFFICE)
 252-355-0216 (FAX)



SIGN IN SHEET
 PROJECT: Lenoir CC Aviation Center
 MEETING DATE: _____
 JKF PROJECT NO: _____

NAME	AFFILIATION	PHONE/ FAX	E-MAIL
Bill Hecold	Jim Thompson	443-504-9550	Bhecold@smiththompson.com
Brian Armstrong	J M Thompson	919/816-1771	barmstrong@jmtthompson.com
Darren Smith	Hayco	336-444-4448	dsmith@hayco-construction.com
Deborah Sutton	LCC	252-560-3662	dsutton@lenorcc.edu
Quinn Lancaster	Clancy 3 Threys	910-876-4637	quinnlanaster@clancythreys.com
DEAN DENNING	MURFEITH	919.750.4194	ddenning@murfethcon.com
JEFF CLIFTON	Southern Touch Contracting (GC)	910-268-8909	jeff.southern@earthlink.net
Brent Garlington	Trend Construction, Inc	910-723-3743	bgarlington@trendinc.biz
Brendan Kennedy	Humphrey Mechanical	910-381-3104	bkennedy@hmfmechanical.com
Gail Ferrick	DANIEL & DANIELS	919-778-4525	GAILHELAND@CC.COM
Gary Swinson	ERNIE EVERETT SITE PREP	252-527-8488	gswinson@eesiteprep.com
LIZ RAMOS	Team Lighting	252-714-6983	elizabeth@teamlighting.com
Dale Burkett	Costa & Company, Inc	252-977-3020	dale@costacompanyinc.com
JUSTIN WEATHERY	MUTER CONSTRUCTION	919-404-8330	BUILDING BIDS @ MUTER CONSTRUCTION.COM

625 LYNNDALE COURT, SUITE F
 GREENVILLE, NC 27858
 252-355-1068 (OFFICE)
 252-355-0216 (FAX)



SIGN IN SHEET

PROJECT: LENOIR CC AVIATION CENTER

MEETING DATE: 05.22.24

JKF PROJECT NO: 2022-10

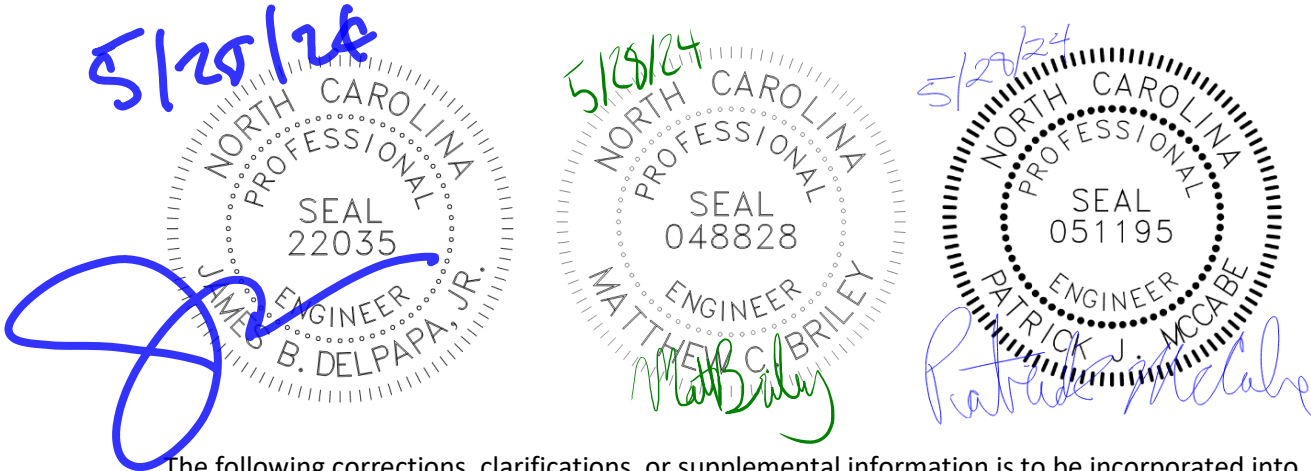
NAME	AFFILIATION	PHONE/ FAX	E-MAIL
<i>Project Manager</i>	<i>Wheat</i>	<i>609 868-0600</i>	<i>cc@bestand gravel.com</i>
<i>Project Director</i>	<i>Wheat</i>	<i>919-500-4700</i>	<i>rpittman@doegs.com</i>
<i>Ron Pittman</i>	<i>DGC Glass</i>	<i>919-778-3252</i>	<i>john@bestsand and Gravel.com</i>
<i>John Cunningham</i>	<i>BEST SAND & GRAVEL INC.</i>		<i>john@jKF-arch.com</i>
<i>John Herridge</i>	<i>JKF</i>		

625 LYNNDALE COURT, SUITE F
 GREENVILLE, NC 27858
 252-355-1068 (OFFICE)
 252-355-0216 (FAX)

ADDENDUM NO. 1

DATE: 5/28/2024

To: ALL BIDDERS
From: ATLANTEC ENGINEERS
RE: LENOIR COMMUNITY COLLEGE NEW AVIATION CENTER FOR EXCELLENCE
JKF Project No. 2022-18
Atlantec Project No. 22183



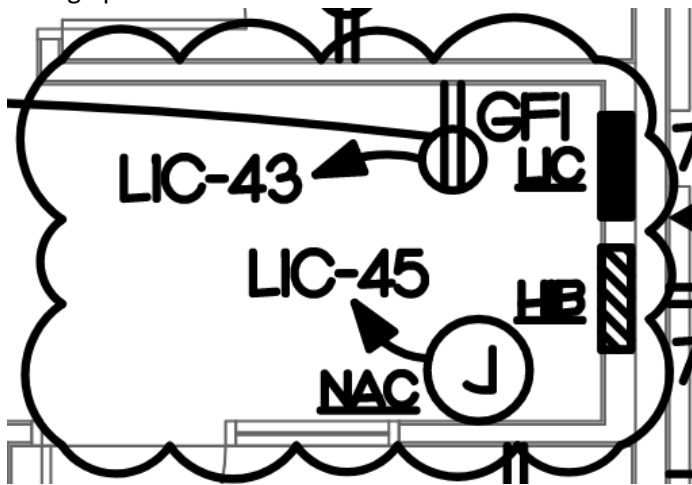
The following corrections, clarifications, or supplemental information is to be incorporated into the Contractor(s) bid to perform the work:

CHANGES TO DRAWINGS:

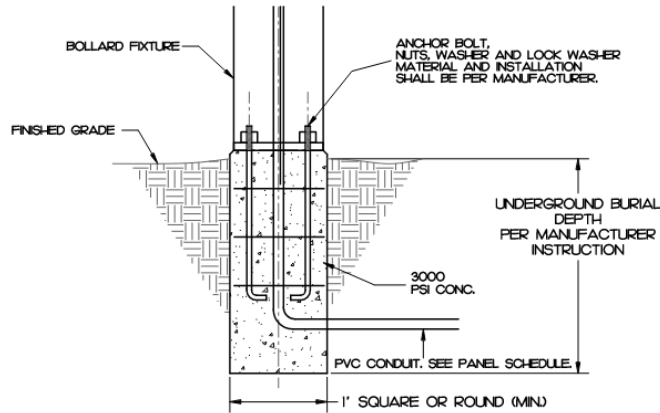
1. None.

CLARIFICATIONS:

1. Mounting heights for fan controllers, card readers, and ADA door push buttons, shall be coordinated with the architect's typical mounting height detail A3/A8.1.
2. Change panels 'H1B' and 'L1C' to flush mount.



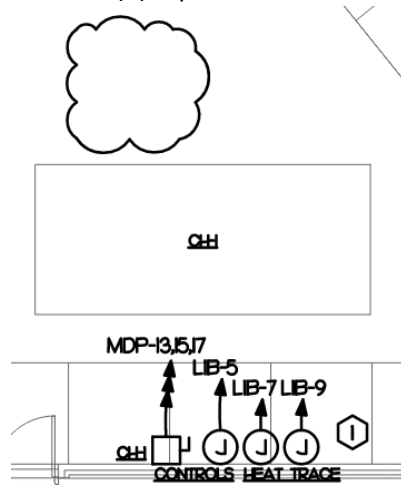
- Bollard base detail A18/E5.3 added.



NOTES:

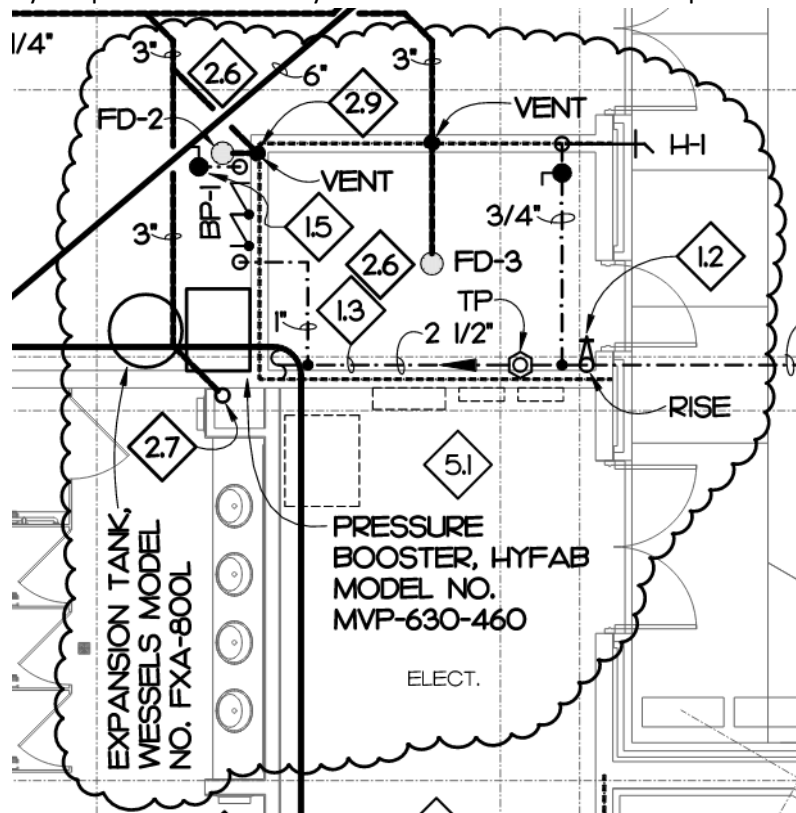
1. THIS DETAIL IS A GUIDE LINE. SEE BOLLARD MANUFACTURER INFORMATION FOR FURTHER DETAIL. MANUFACTURER INFORMATION SHALL SUPERSEDE THE DETAIL SHOWN ABOVE.

- Gas piping removed from grounding electrode conductors. Bond gas pipe per NEC 250.1-#3/0 CU in 1" conduit to gas pipe.
- Main circuit breaker in panel 'MDP' to have LSIG settings.
- Relocate circuits L1C-24 and L1C-26 for site sign per architectural site plan. Coordinate installation with architect and sign vendor as required.
- Remove (2) 3-pole devices without circuit numbers from A18/E3.12.



- Columbia Lighting has been approved as an alternate manufacturer for light fixture types 'A1' and 'H1'.
- ALW has been approved as an alternate manufacturer for light fixture types 'L1', 'L2', 'L3', 'L4', 'L5', and 'L6'.
- Day-O-Lite has been approved as an alternate manufacturer for light fixture type 'V1'. Viscor has been removed as an approved manufacturer for light fixture type 'V1'.

11. The second sentence of general note 25 on E0.0 has been updated. It now reads, "The contractor shall pay all charges for the installation of the new underground utility service and any rework of existing utilities."
12. General note 26 on E0.0 has been updated to include the following: "The contractor shall pay all charges for the installation of the new telecom service(s) and any rework of existing utilities."
13. Laars has been approved as an alternate manufacturer for condensing boilers.
14. Paint Booth Makeup Air Fan heat to be controlled via inlet temperature sensor.
15. The contractor shall furnish and install a HYFAB MVP-630-460 domestic booster pump on the incoming domestic water system (See sketch for location). The pump shall be 3 HP at 460/3. Equal pump systems by Grundfos and Taco are acceptable. Provide all labor and material required including a Wessels FXA hydro-pneumatic tank. Equal hydro-pneumatic tanks by Grundfos and Amtrol are acceptable.

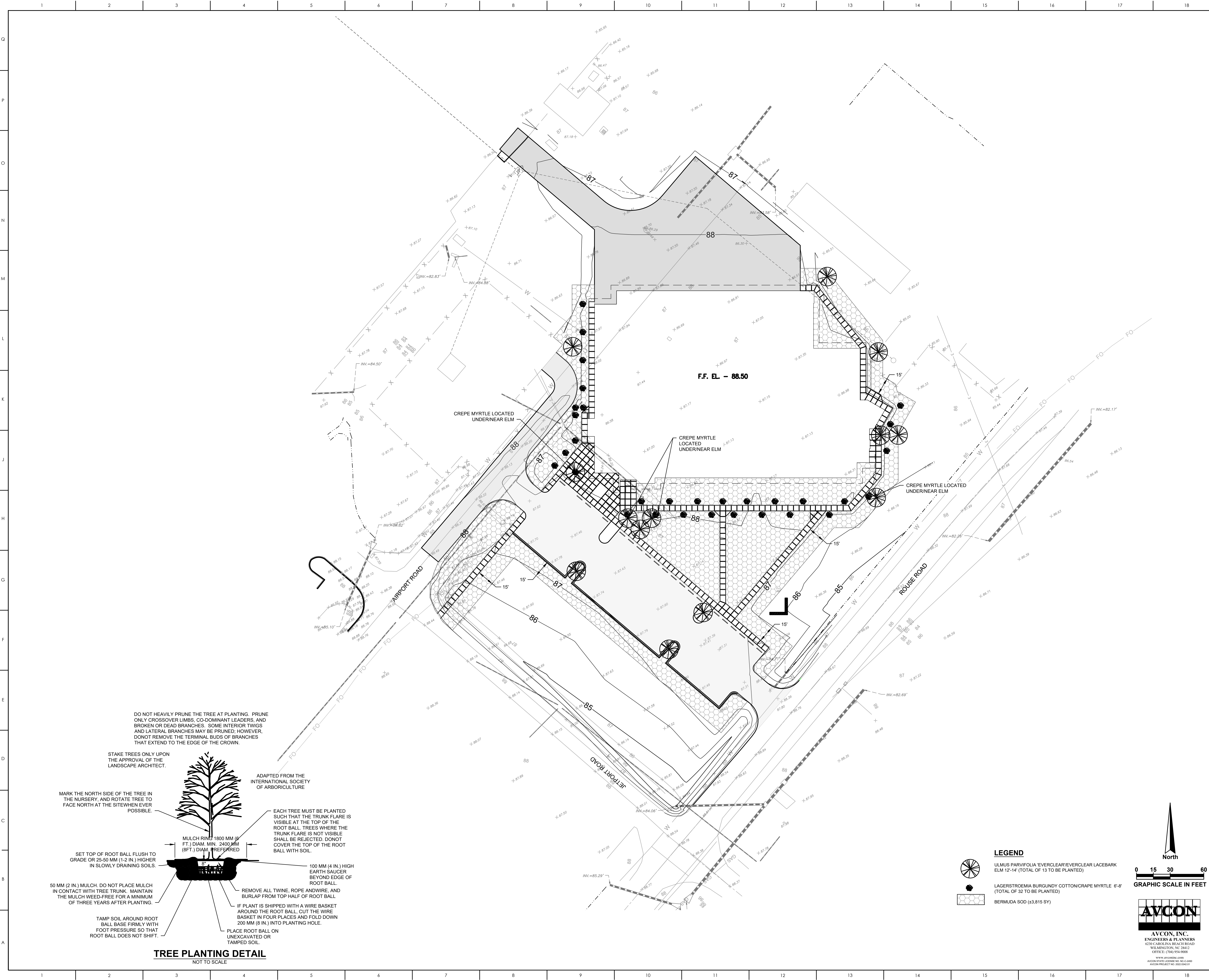


16. Provide a 15A/3-pole circuit breaker at H1A-38,40,42, and a new branch circuit to the control panel disconnect for the domestic booster pump located in Mechanical 125. Provide 4-#12, 1-#12G in 1/2" conduit.

CHANGES TO SPECIFICATIONS:

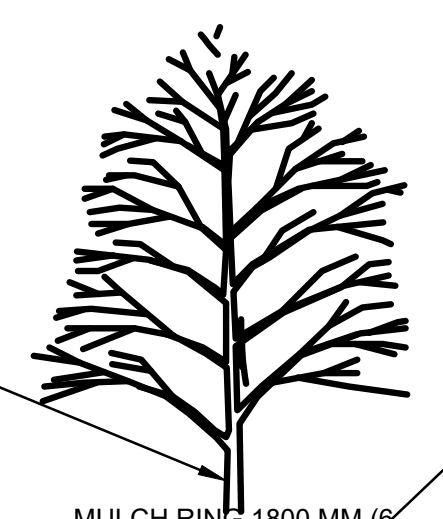
1. None.

END OF ADDENDUM NO. 1



DO NOT HEAVILY PRUNE THE TREE AT PLANTING. PRUNE ONLY CROSSOVER LIMBS, CO-DOMINANT LEADERS, AND BROKEN OR DEAD BRANCHES. SOME INTERIOR TWIGS AND LATERAL BRANCHES MAY BE PRUNED, HOWEVER, DONOT REMOVE THE TERMINAL BUDS OF BRANCHES THAT EXTEND TO THE EDGE OF THE CROWN.

STAKE TREES ONLY UPON THE APPROVAL OF THE LANDSCAPE ARCHITECT.

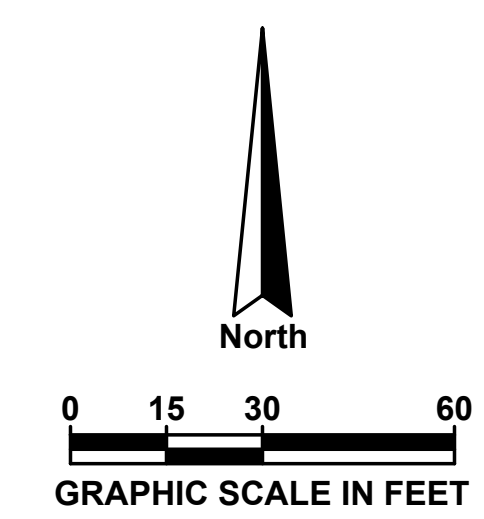


ADAPTED FROM THE INTERNATIONAL SOCIETY OF ARBORICULTURE

- MARK THE NORTH SIDE OF THE TREE IN THE NURSERY, AND ROTATE TREE TO FACE NORTH AT THE SITEWHEN EVER POSSIBLE.
- MULCH RING 1800 MM (6 FT.) DIAM. MIN. 2400 MM (8FT.) DIAM. REFERRED
- SET TOP OF ROOT BALL FLUSH TO GRADE OR 25-50 MM (1-2 IN.) HIGHER IN SLOWLY DRAINING SOILS.
- 50 MM (2 IN.) MULCH. DO NOT PLACE MULCH IN CONTACT WITH TREE TRUNK. MAINTAIN THE MULCH WEED-FREE FOR A MINIMUM OF THREE YEARS AFTER PLANTING.
- TAMP SOIL AROUND ROOT BALL BASE FIRMLY WITH FOOT PRESSURE SO THAT ROOT BALL DOES NOT SHIFT.
- EACH TREE MUST BE PLANTED SUCH THAT THE TRUNK FLARE IS VISIBLE AT THE TOP OF THE ROOT BALL. TREES WHERE THE TRUNK FLARE IS NOT VISIBLE SHALL BE REJECTED. DONOT COVER THE TOP OF THE ROOT BALL WITH SOIL.
- 100 MM (4 IN.) HIGH EARTH SAUCER BEYOND EDGE OF ROOT BALL.
- REMOVE ALL TWINE, ROPE AND WIRE, AND BURLAP FROM TOP HALF OF ROOT BALL.
- IF PLANT IS SHIPPED WITH A WIRE BASKET AROUND THE ROOT BALL, CUT THE WIRE BASKET IN FOUR PLACES AND FOLD DOWN 200 MM (8 IN.) INTO PLANTING HOLE.
- PLACE ROOT BALL ON UNEXCAVATED OR TAMPED SOIL.

TREE PLANTING DETAIL
NOT TO SCALE

- LEGEND**
- ULMUS PARVIFOLIA 'EVERCLEAR'/EVERCLEAR LACEBARK ELM 12'-14" (TOTAL OF 13 TO BE PLANTED)
 - LAGERSTROEMIA BURGUNDY COTTON/CREPE MYRTLE 6'-8" (TOTAL OF 32 TO BE PLANTED)
 - BERMUDA SOD (±3,815 SY)



AVCON
ENGINEERS & PLANNERS
6230 CAROLINA BEACH ROAD
WILMINGTON, NC 28412
OFFICE: (704) 954-9008
WWW.AVCON.COM
AVCON STATE LICENSE NO. NC-0-4860
AVCON PROJECT NO. 22-25364-02A

MATERIALS KEYING LEGEND

- GENERAL NOTES**
- EXISTING TOPOGRAPHIC SURVEY FROM MATRIX EAST DATED FEBRUARY 2023.
 - EXISTING UTILITIES SHOWN ARE APPROXIMATE AND SHOULD BE FIELD VERIFIED BY CONTRACTOR.
 - SHEET ADDED BY ADDENDUM.

KEY PLAN

SCO ID # 22-25364-02A

NO	REVISION	DATE

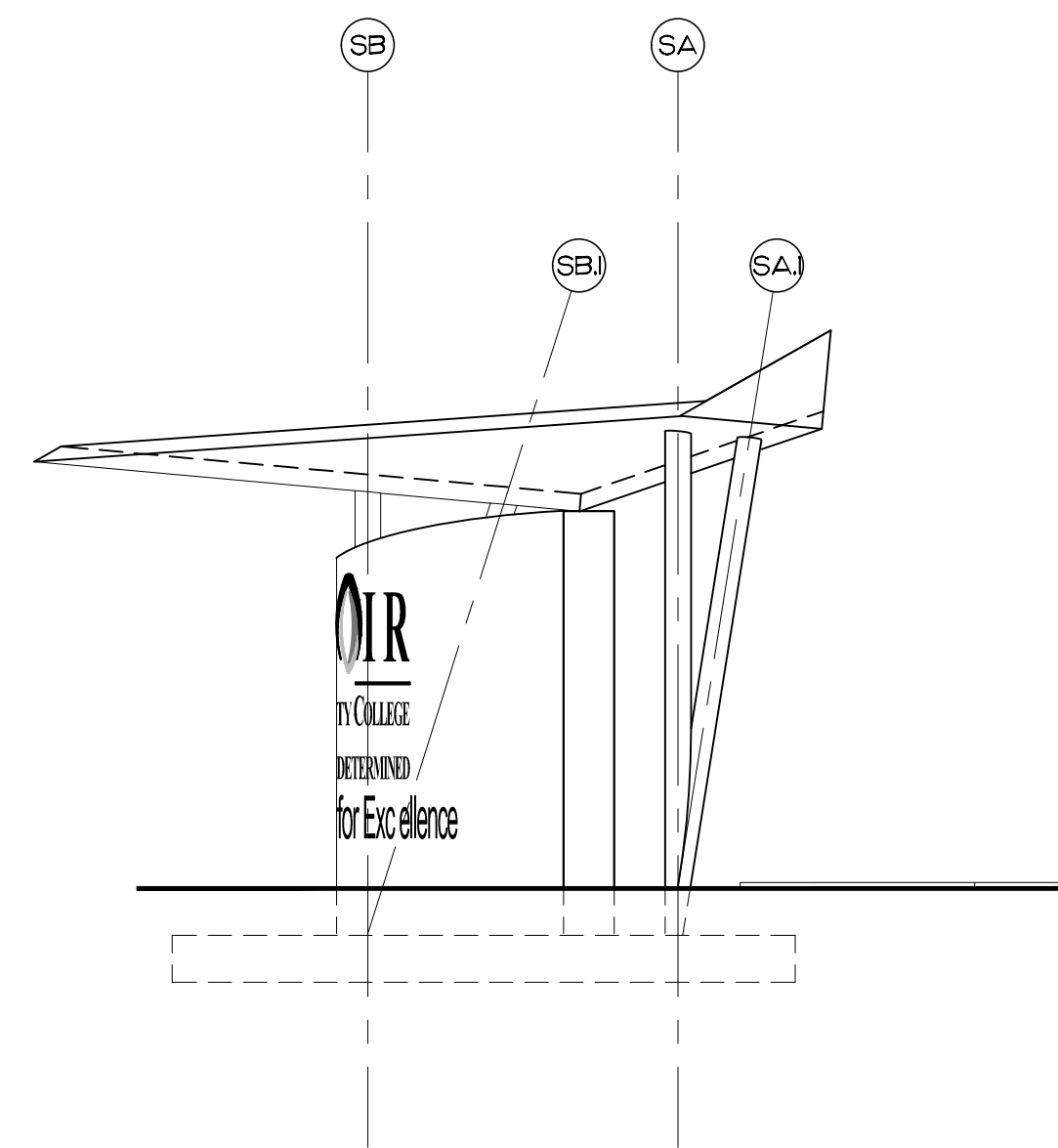
LENOIR COMMUNITY COLLEGE
NEW AVIATION CENTER FOR EXCELLENCE
KINSTON, NC

LANDSCAPE PLAN

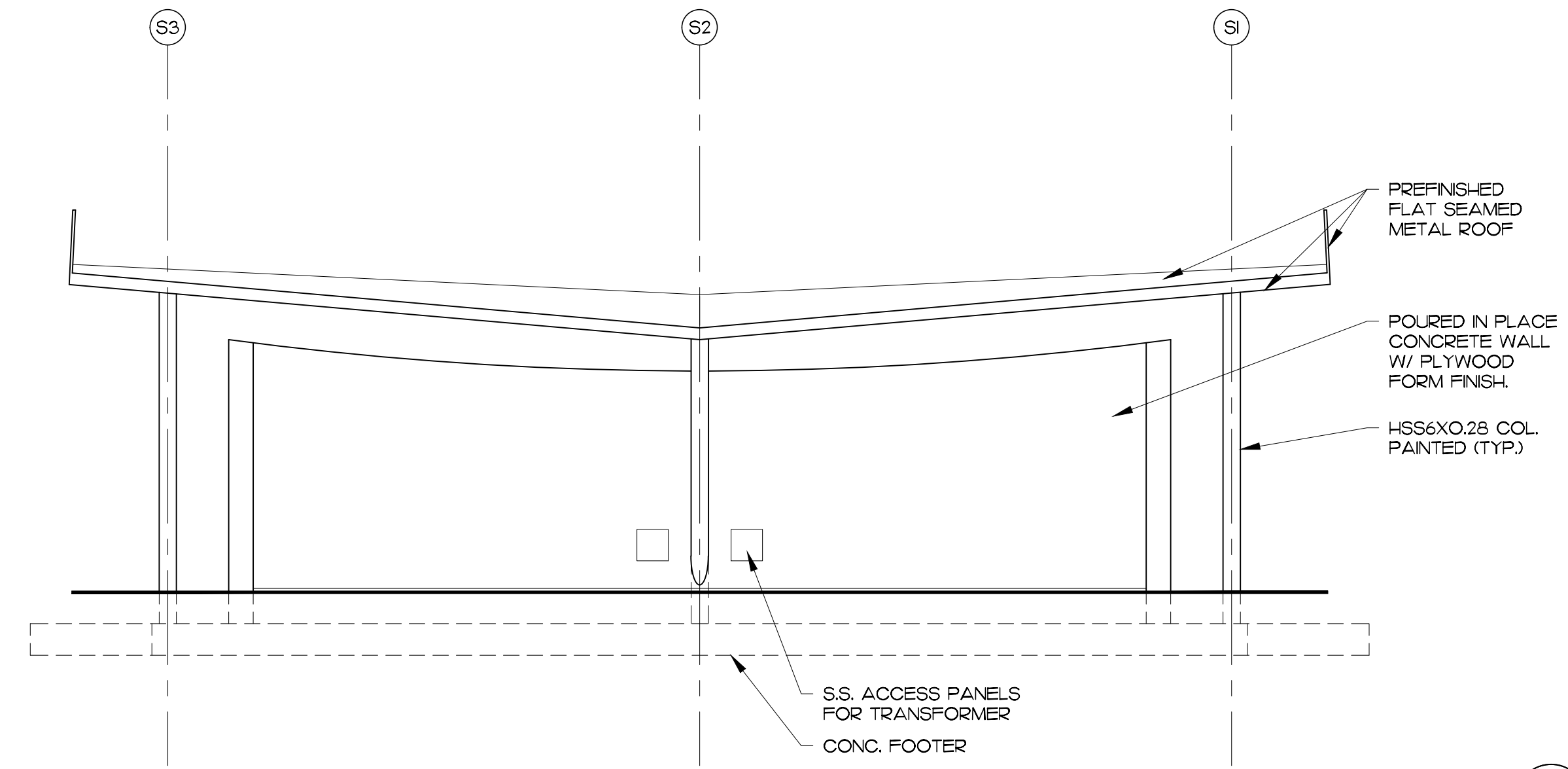
SCALE	1" = 30'-0"	DRAWING NO.	C2.2
DRAWN	AMT	CHECKED	
DATE	2-28-2024	PROJECT NO.	
PROJECT NO.	2022-18		



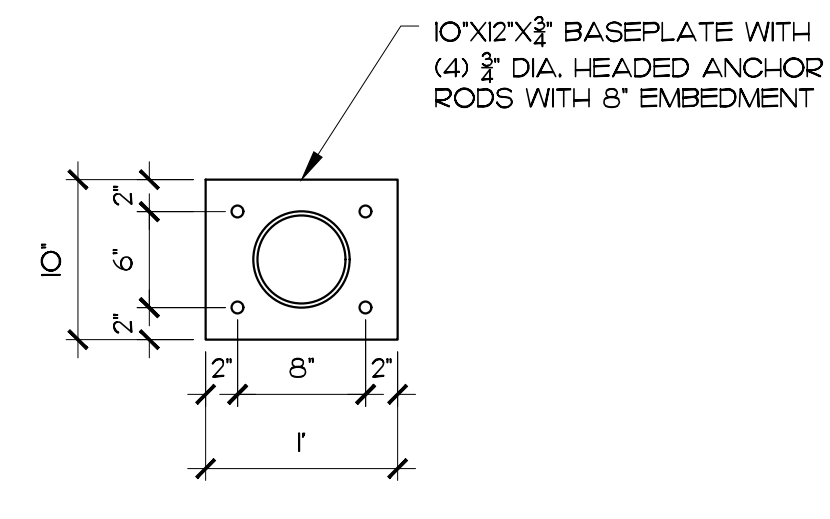
REFERENCE RENDERING (N5)
NTS.



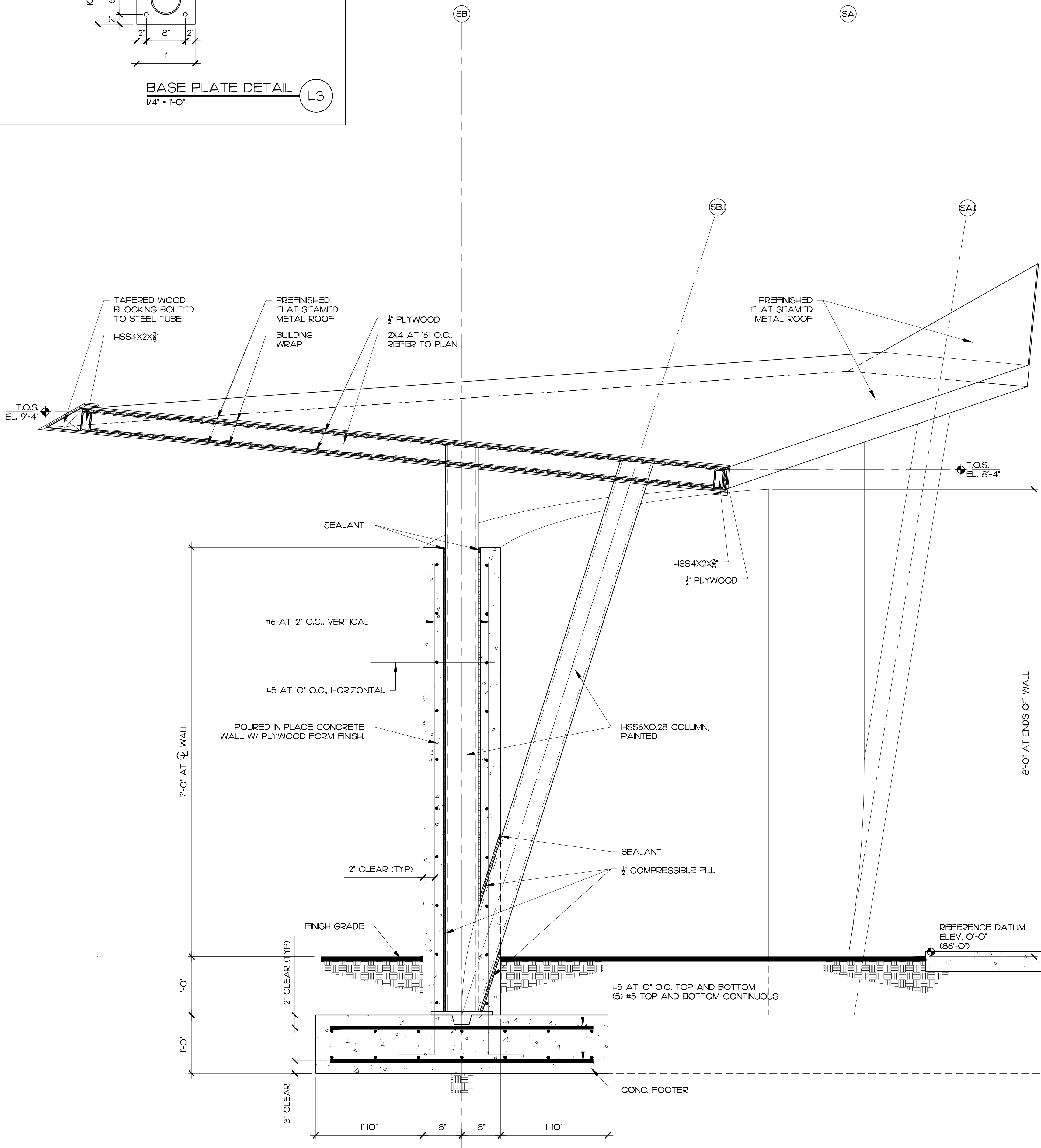
EAST ELEVATION (N10)
1/4" = 1'-0"



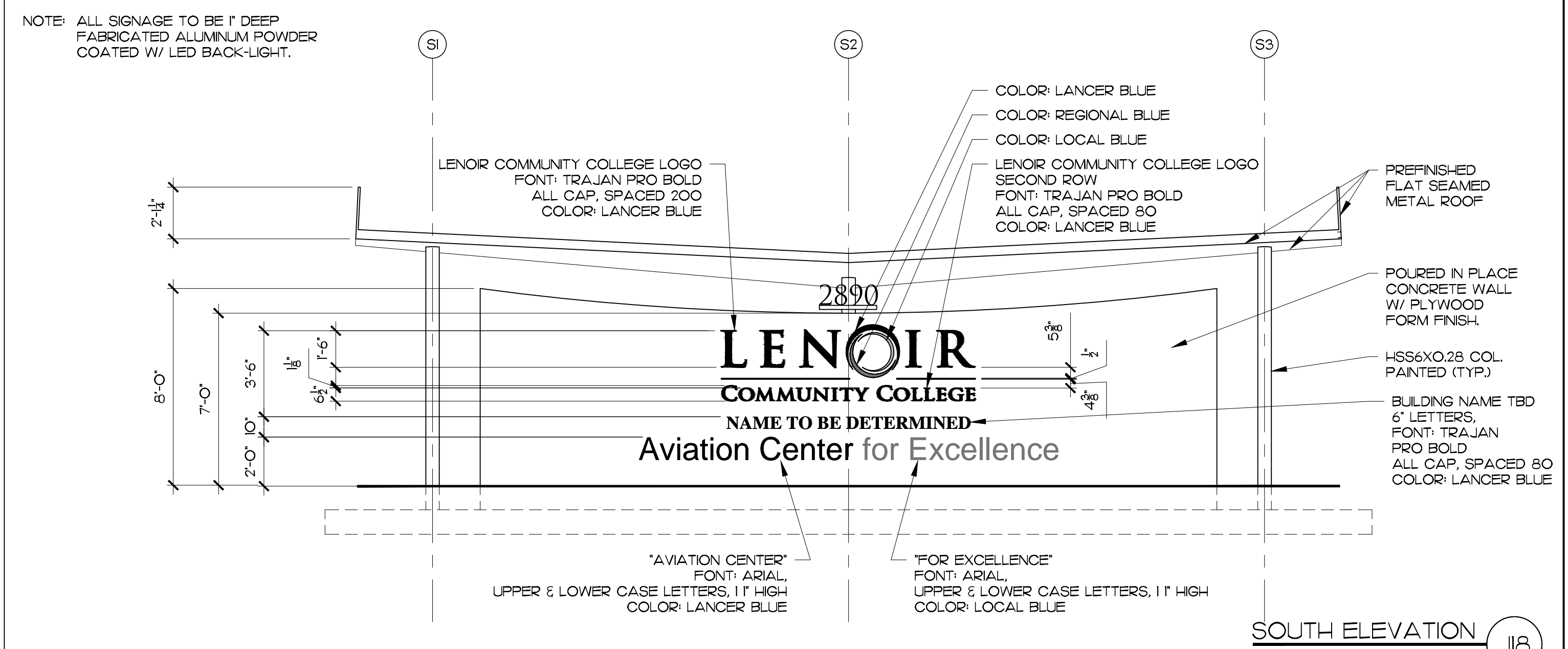
NORTH ELEVATION (N18)
1/4" = 1'-0"



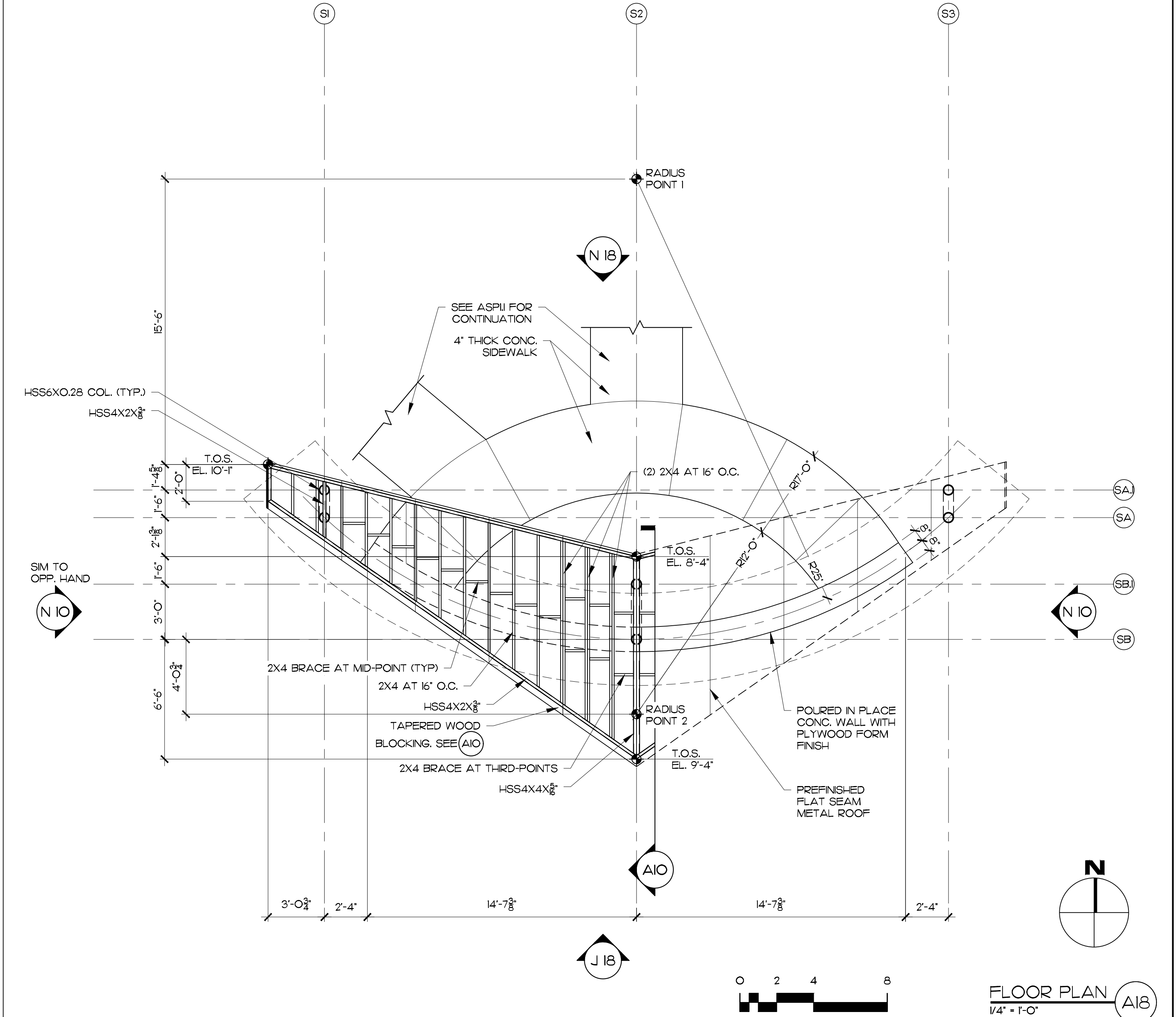
BASE PLATE DETAIL (L3)
1/4" = 1'-0"



SECTION (A10)
1" = 1'-0"



SOUTH ELEVATION (J18)
1/4" = 1'-0"



FLOOR PLAN (A18)
1/4" = 1'-0"

MATERIALS KEYING LEGEND

GENERAL NOTES
1. LENOIR COMMUNITY COLLEGE LOGO AND BRAND GUIDELINES WILL BE SENT UPON REQUEST FOR COLOR STANDARDS AND LOGO SIZING.

KEY PLAN

SCO ID #22-25364-02A

NO.	REVISION	DATE

LENOR COMMUNITY COLLEGE
NEW AVIATION CENTER
FOR EXCELLENCE
KINSTON, NC

EXTERIOR MARQUEE SIGN

SCALE: AS NOTED	DRAWING NO:
DRAWN: MCZ	A6.6
CHECKED: JKF	
DATE: 5-20-2024	PROJECT NO: 2022-18