

DIVISION 00

SECTION 00 91 16: SUPPLEMENTAL SHEETS

**Southern Wayne High School – HVAC Renovations & Window Replacement
Dudley, North Carolina**

00 91 16.01: GENERAL

1. These supplemental sheets are a part of the Specifications and are intended to give additional information on items which may or may not be noted in the specifications or on the drawings. It is suggested that the Contractor carefully read these sheets and note changes, additions, etc., in the corresponding section of these specifications.
2. The specifications are typical and only those parts applicable to this project will be considered.
3. All items in prior Addenda are still pertinent unless said item has been modified or changed in this Addendum.

00 91 16.02: MODIFICATION

Revise the following:

- A. SECTION 00 11 13: Advertisement for Bid

Sealed proposals will be received by the Architect on behalf of the **Wayne County Board of Education in the Administrative Office, Board of Conference Room, located at 2001 E. Royall Avenue, Goldsboro, NC on Tuesday, October 24, 2023. All bids will be publicly opened and read for the construction at 2:00 p.m. on this date.**

00 91 16.03: ADDITIONAL SPECIFICATION

Add the following:

- A. SECTION 00 91 16: SUPPLEMENTAL SHEETS – Addendum #3 dated October 16, 2023.
- B. SECTION 23 20 00 HVAC PIPING: Paragraph 02.D.1. Condensate drain lines in crawl space shall be PVC. Condensate drain lines in building shall be type L copper.

00 91 16.04: DRAWINGS

Add the following:

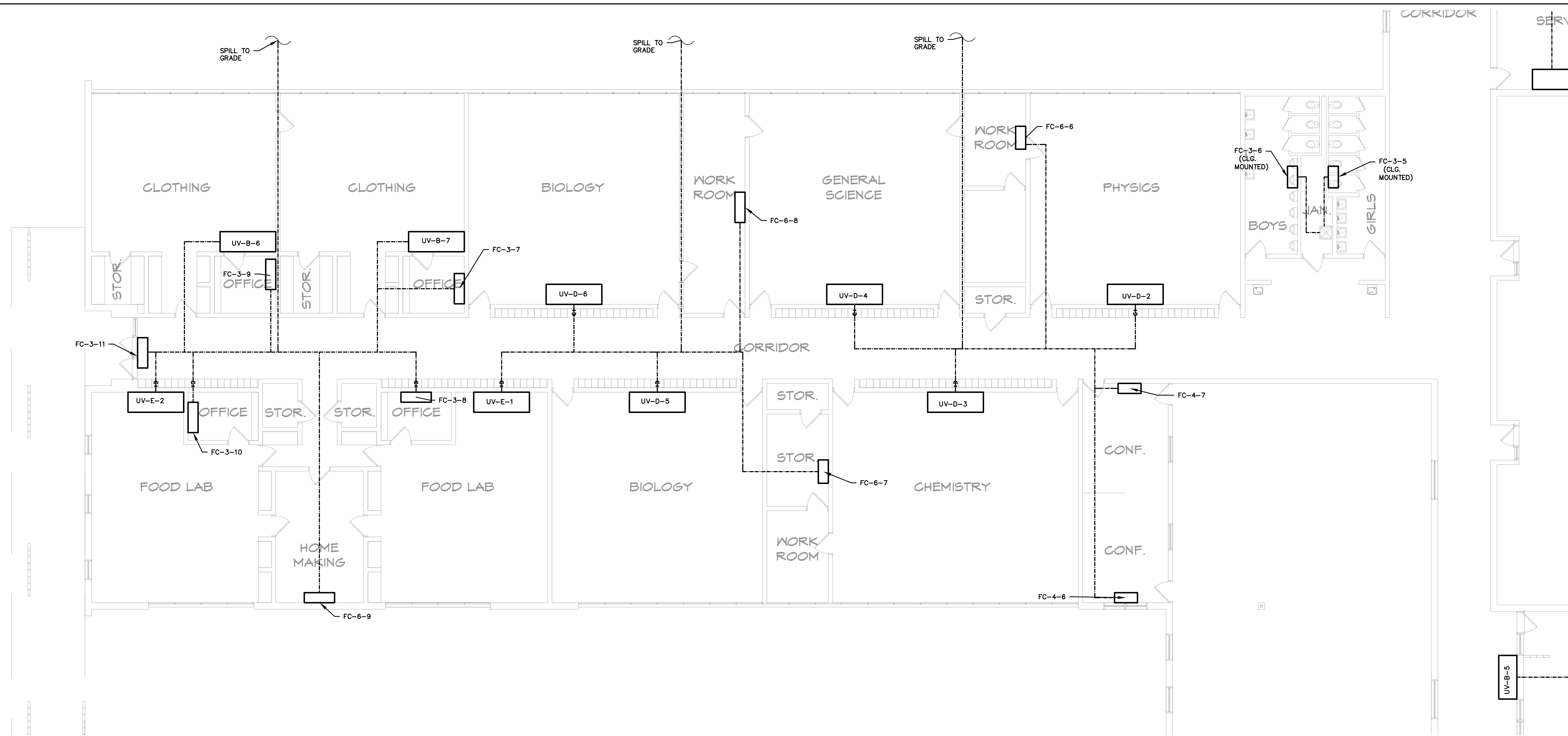
- A. SHEET M206 FLOOR PLAN – AREA A - Dual temperature supply and return piping and outside air duct shall run above corridor ceiling. Condensate drains shall drop in space from unit to crawl space and shall be insulated and covered with metal jacket. All condensate piping in crawl space shall be 2”.
- B. SHEET M208 FLOOR PLANS – AREA C & D - Dual temperature supply and return piping and outside air duct shall run above corridor ceiling. Refer to sheet M212 for condensate pipe routing. Floor mounted units shall not have outside air duct connections. Dual temperature pipe to floor mounted units shall drop on wall at unit. Insulation shall be covered with metal jacket.
- C. SHEET M210 2nd FLOOR PLANS – AREA C - Dual temperature supply and return piping and outside air duct shall run above corridor ceiling. Refer to sheet M213 for condensate pipe routing. Floor mounted units shall not have outside air duct connections. Dual temperature pipe to floor mounted units shall drop on wall at unit. Insulation shall be covered with metal jacket.
- D. SHEET M212 - FLOOR PLANS – AREA C & D CONDENSATE DRAIN ONLY – Delete this sheet in its entirety and replace with SHEET M212 - FLOOR PLANS – AREA C & D CONDENSATE DRAIN ONLY – Addendum #3 dated October 16, 2023. Sheet issued to clarify location of condensate drains. Drains from ceiling mounted unit ventilators will drop in the corridor locker. Floor mounted unit drains shall connect to risers in crawl space and discharge to grade. All condensate pipe in crawl space shall be 2”.
- E. SHEET M213 - 2nd FLOOR PLANS – AREA C CONDENSATE DRAIN ONLY – Delete this sheet in its entirety and replace with SHEET M213 - 2nd FLOOR PLAN – AREA C CONDENSATE DRAIN ONLY – Addendum #3 dated October 16, 2023. Sheet issued to clarify location of condensate drains. Drains from ceiling mounted unit ventilators will drop in the corridor locker. Floor mounted unit drains shall run above the first floor ceiling and route to drain risers as shown.

00 91 16.05: PRIOR APPROVAL

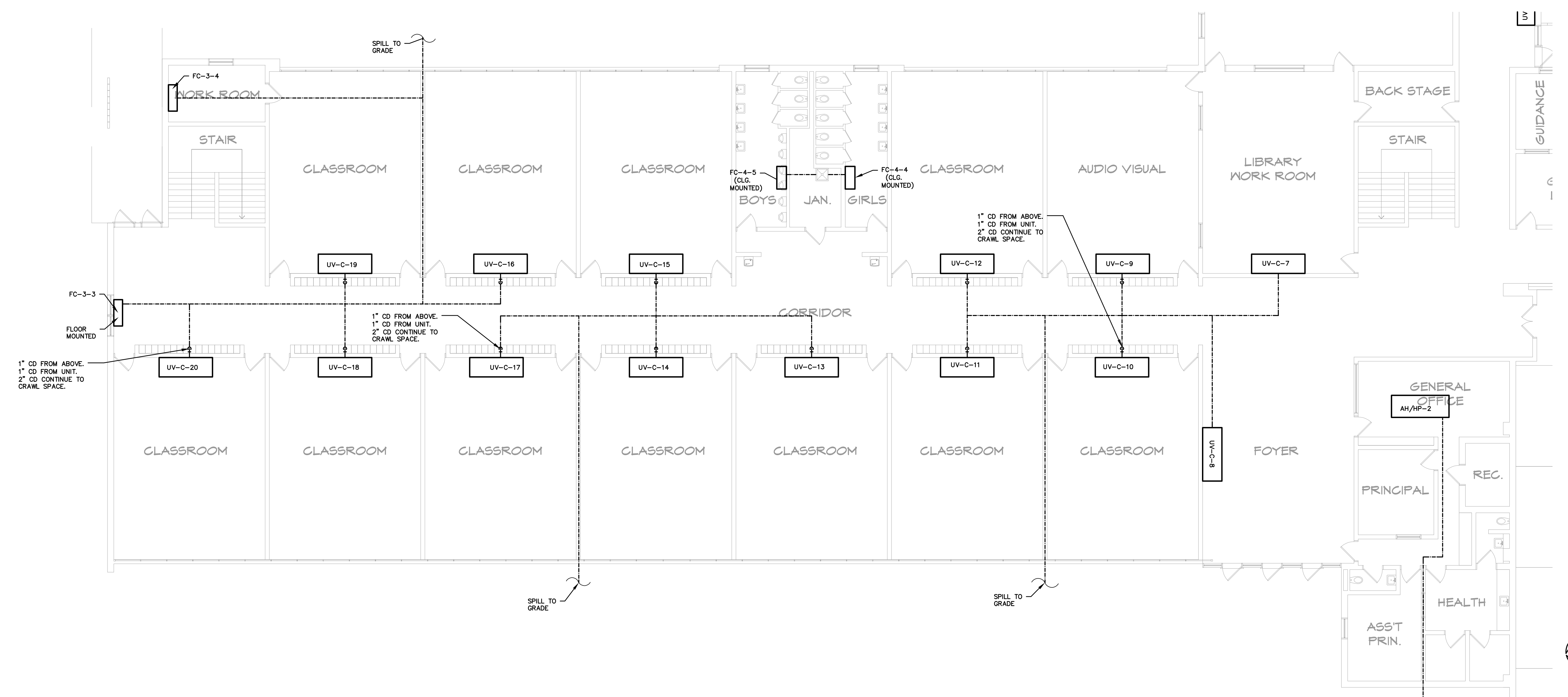
The following products/manufacturers are approved only if items supplied and submitted meet or exceed the Construction Documents:

- A. SECTION 23 21 23 PUMPS
 - 1. Patterson HVAC Pumps

End of Addendum #3
Issued: October 16, 2023

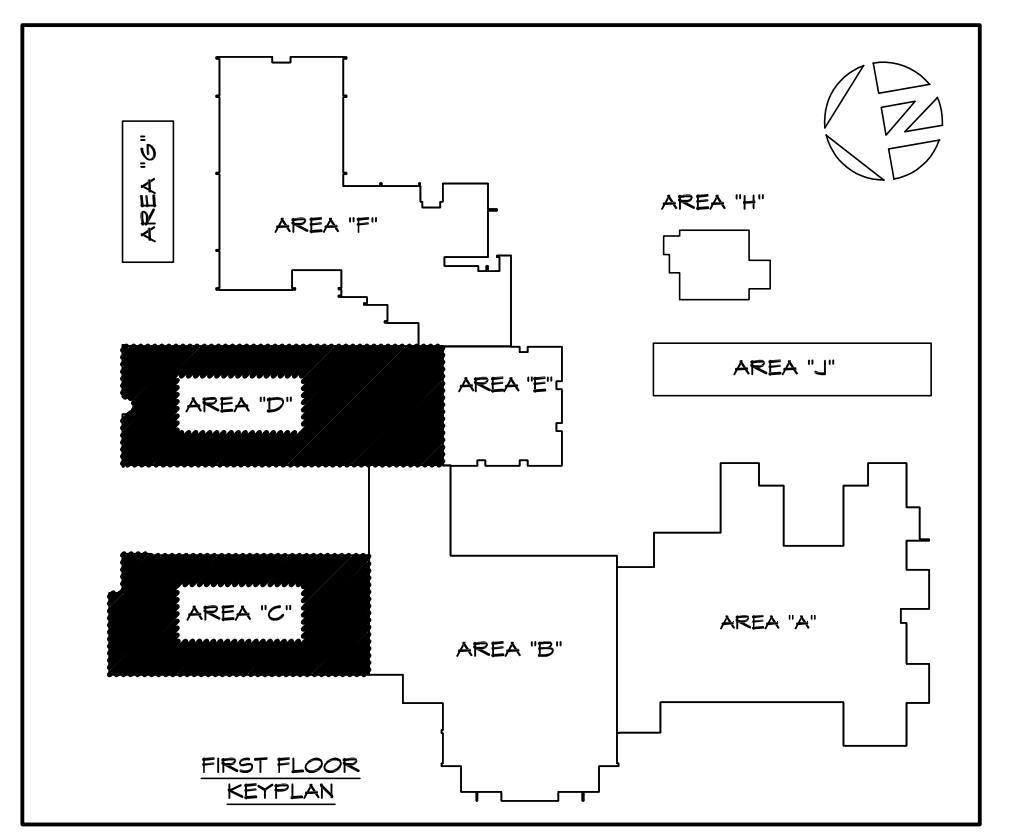


2 FLOOR PLAN - AREA D
A202 SCALE: 1/8" = 1'-0"



1 FLOOR PLAN - AREA C
A202 SCALE: 1/8" = 1'-0"

LEGEND
--- CONDENSATE DRAIN

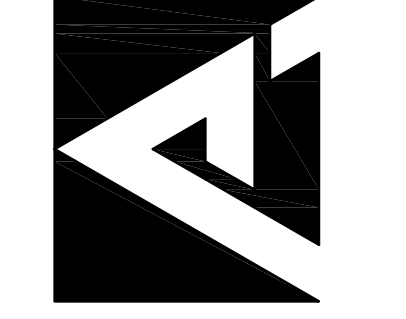


THE DRAWING IS THE PROPERTY OF THE ARCHITECTS AND CAN NOT BE USED FOR CONSTRUCTION PURPOSES OR REPRODUCED WITHOUT WRITTEN CONSENT OF THE ARCHITECT.



PINNACLE ARCHITECTURE PROFESSIONAL ASSOCIATION
P.O. BOX 187, 630 TEAM ROAD, SUITE 200
MATTHEWS, NORTH CAROLINA 28106
PH: (704) 847-9851 FAX: (704) 847-9853

701 EAST BAY STREET, SUITE 302
CHARLESTON, SOUTH CAROLINA 29403
PH: (843) 872-5345 FAX: (843) 872-5374

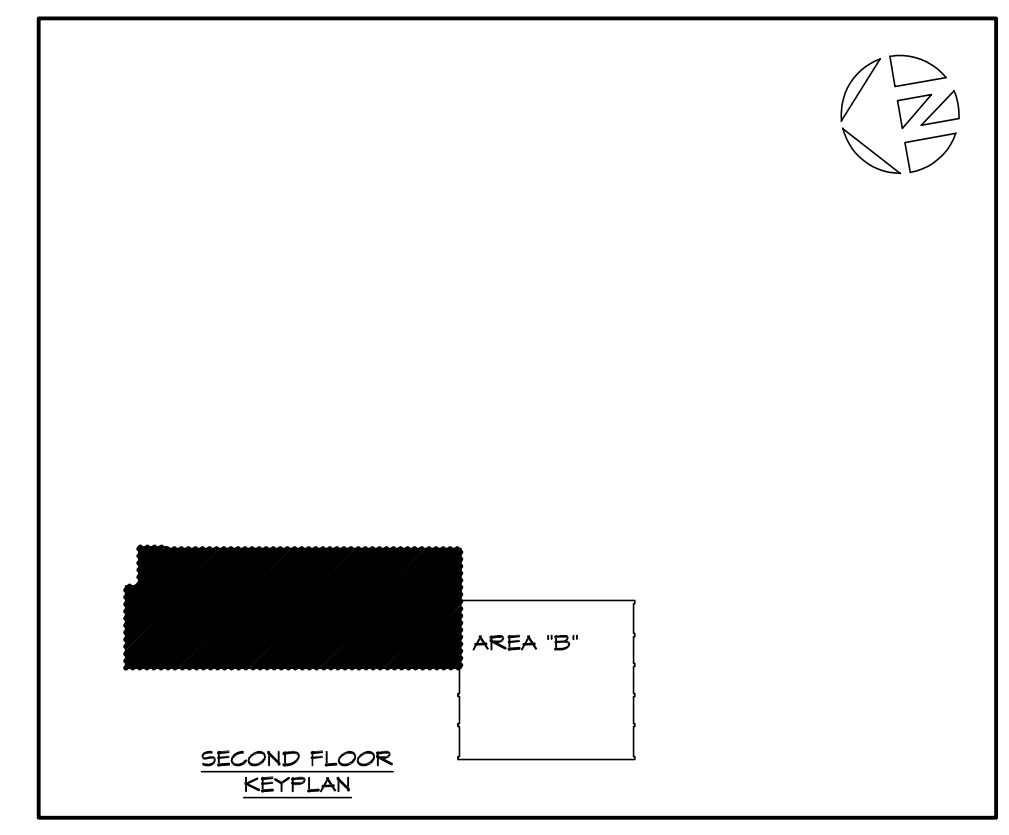
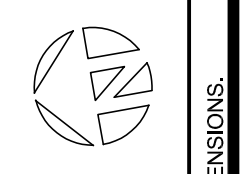


REVISION SCHEDULE
DATE REFERENCE
10/16/23 ADDENDUM #3

SOUTHERN WAYNE HIGH SCHOOL RENOVATIONS DUDLEY, NORTH CAROLINA
FLOOR PLANS - AREA C & D
CONDENSATE DRAIN ONLY

NO.	DATE	REFERENCE
1	10/16/23	ADDENDUM #3

M212



CONTRACTOR TO VERIFY ALL DIMENSIONS

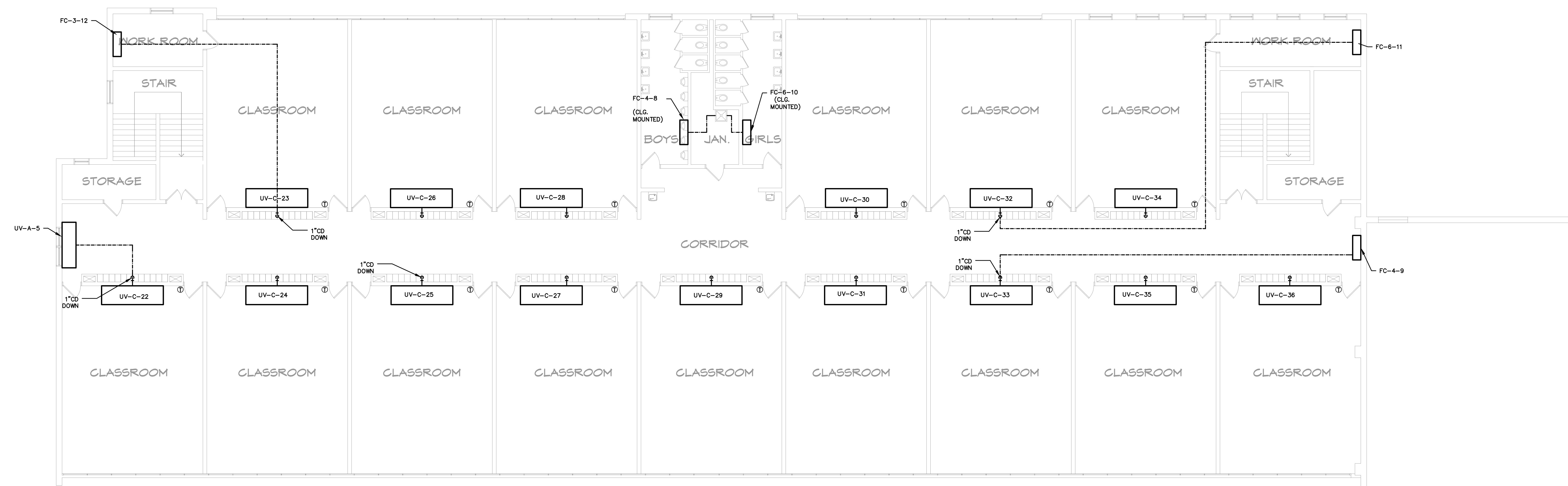


**PINNACLE ARCHITECTURE
PROFESSIONAL ASSOCIATION**
P.O. BOX 187, 630 TEAM ROAD, SUITE 200
MATTHEWS, NORTH CAROLINA 28106
PH: (704) 847-9851 FAX: (704) 847-9853

701 EAST BAY STREET, SUITE 302
CHARLESTON, SOUTH CAROLINA 29403
PH: (803) 872-5345 FAX: (803) 872-5374

LEGEND

--- CONDENSATE DRAIN



THE DRAWING IS THE PROPERTY OF THE ARCHITECTS AND CAN NOT BE USED FOR CONSTRUCTION PURPOSES OR REPRODUCED WITHOUT WRITTEN CONSENT OF THE ARCHITECT.

ISSUE DATE: 11/23/2022
DRAWN BY: J.M.R.
CHECKED BY: P.M.V./R.E.B.
PROJECT: 2219

**SOUTHERN WAYNE HIGH SCHOOL
RENOVATIONS
DUDLEY, NORTH CAROLINA**
2nd FLOOR PLANS - AREA C
CONDENSATE DRAIN ONLY

REVISION SCHEDULE		
NO.	DATE	REFERENCE
1	10/16/23	ADDENDUM #3