

FOR QUESTIONS, CALL THE  
Eastern North Carolina  
REGION 36  
PHONE: (919) 825 - 3566  
EMAIL: reg36@captivaire.com

PATENT NUMBERS  
AC-PSP (UNITED STATES) - US PATENT 7963830 B2.  
AC-PSP WALL (CANADA) - CA PATENT 2820509.  
AC-PSP ISLAND (CANADA) - CA PATENT 2520330.

**HOOD INFORMATION - JOB#6323239**

HOOD NO	TAG	MODEL	MANUFACTURER	LENGTH	MAX COOKING TEMP	TYPE	APPLIANCE DUTY	DESIGN CFM/FT	TOTAL EXH CFM	EXHAUST PLENUM RISER(S)				TOTAL SUPPLY CFM	HOOD CONSTRUCTION	HOOD CONFIG		
										WIDTH	LENG	HEIGHT	DIA			CFM	VEL	SP
1	HOOD-1	5424 ND-2-PSP-F	CAPTIVEAIRE	8' 3"	600 DEG	I	HEAVY	212	1750		4"	14"	1750	1637	-0.878"	1400	430 SS WHERE EXPOSED	LEFT ALONE
2	HOOD-2	5424 ND-2-PSP-F	CAPTIVEAIRE	9' 3"	600 DEG	I	HEAVY	189	1750		4"	14"	1750	1637	-0.840"	1312	430 SS WHERE EXPOSED	RIGHT ALONE

**HOOD INFORMATION**

HOOD NO	TAG	FILTER(S)				LIGHT(S)				UTILITY CABINET(S)				FIRE SYSTEM PIPING	HOOD HANGING WEIGHT		
		TYPE	QTY	HEIGHT	LENGTH	EFFICIENCY @ 7 MICRONS	QTY	TYPE	WIRE GUARD	LOCATION	SIZE	FIRE SYSTEM	SIZE			ELECTRICAL MODEL #	SWITCHES QUANTITY
1	HOOD-1	CAPTRATE SOLO FILTER	6	16"	16"	85% SEE FILTER SPEC	4	RECESSED ROUND	NO	LEFT	12"x54"x24"	TANK FS	4.0/4.0	SC-122110MA	1 LIGHT 1 FAN	YES	814 LBS
2	HOOD-2	CAPTRATE SOLO FILTER	6	16"	16"	85% SEE FILTER SPEC	5	RECESSED ROUND	NO							YES	533 LBS

**HOOD OPTIONS**

HOOD NO	TAG	OPTION
1	HOOD-1	FIELD WRAPPER 17.00" HIGH FRONT, LEFT. BACKSPLASH 80.00" HIGH X 222.00" LONG 430 SS VERTICAL. LEFT QUARTER END PANEL 23" TOP WIDTH, 0" BOTTOM WIDTH, 23" HIGH 430 SS. INSULATION FOR BACK OF HOOD.
2	HOOD-2	FIELD WRAPPER 17.00" HIGH FRONT, RIGHT. RIGHT QUARTER END PANEL 23" TOP WIDTH, 0" BOTTOM WIDTH, 23" HIGH 430 SS. INSULATION FOR BACK OF HOOD.

**PERFORATED SUPPLY PLENUM(S)**

HOOD NO	TAG	POS	LENGTH	WIDTH	HEIGHT	TYPE	RISER(S)			
							WIDTH	LENG	DIA	CFM
1	HOOD-1	Front	111"	14"	6"	MUA	12"	28"	700	0.160"
2	HOOD-2	Front	111"	14"	6"	MUA	12"	28"	700	0.160"
						MUA	12"	28"	656	0.141"

**GREASE DUCT & CHIMNEY SPECIFICATIONS:**  
PROVIDE GREASE DUCT EQUAL TO CAPTIVEAIRE SYSTEMS MODEL "DW" ROUND 20 GAUGE 430 STAINLESS STEEL DUCTWORK. MODEL "DW" IS LISTED TO UL-1978 AND IS INSTALLED USING "V" CLAMP LOCKING CONNECTIONS SEALED WITH 3M FIRE BARRIER 2000 PLUS. MODEL "DW" DOES NOT REQUIRE WELDING PROVIDING IT HAS BEEN INSTALLED PER THE MANUFACTURES INSTALLATION GUIDE.  
PROVIDE RATED ACCESS DOORS AT EVERY CHANGE IN DIRECTION AND EVERY 12' ON CENTER. PER MANUFACTURES LISTING MODEL "DW" HORIZONTAL RUNS LESS THAN 75 FT. CAN BE SLOPED 1/16" PER 12", HORIZONTAL RUNS MORE THAN 75 FT. CAN BE SLOPED 3/16" PER 12". DUCT SHOULD BE SLOPED AS MUCH AS POSSIBLE TO REDUCE THE CHANCE OF GREASE ACCUMULATION IN HORIZONTAL RUNS.  
IF THE DUCT OR CHIMNEY IS WITHIN 18 INCHES OF COMBUSTIBLE MATERIAL, PROVIDE UL-2221 OR UL-103 HT LISTED DOUBLE WALL GREASE DUCT OR DOUBLE WALL CHIMNEY EQUAL TO CAPTIVEAIRE SYSTEMS MODEL "DW- 2R, 2R TYPE HT, 3R, OR 3Z" ROUND 20 GAUGE 430 STAINLESS INNER DUCT INSULATED WITH A 24 GAUGE 430 STAINLESS OUTER SHELL.

CAPTIVEAIRE SYSTEMS RECOMMENDS THE USE OF LISTED, PRE-FABRICATED ROUND GREASE EXHAUST DUCT TO REDUCE STATIC PRESSURE IN THE SYSTEM, MINIMIZE INSTALLATION AND INSPECTION TIMES, AND ENSURE DUCT IS LIQUID TIGHT

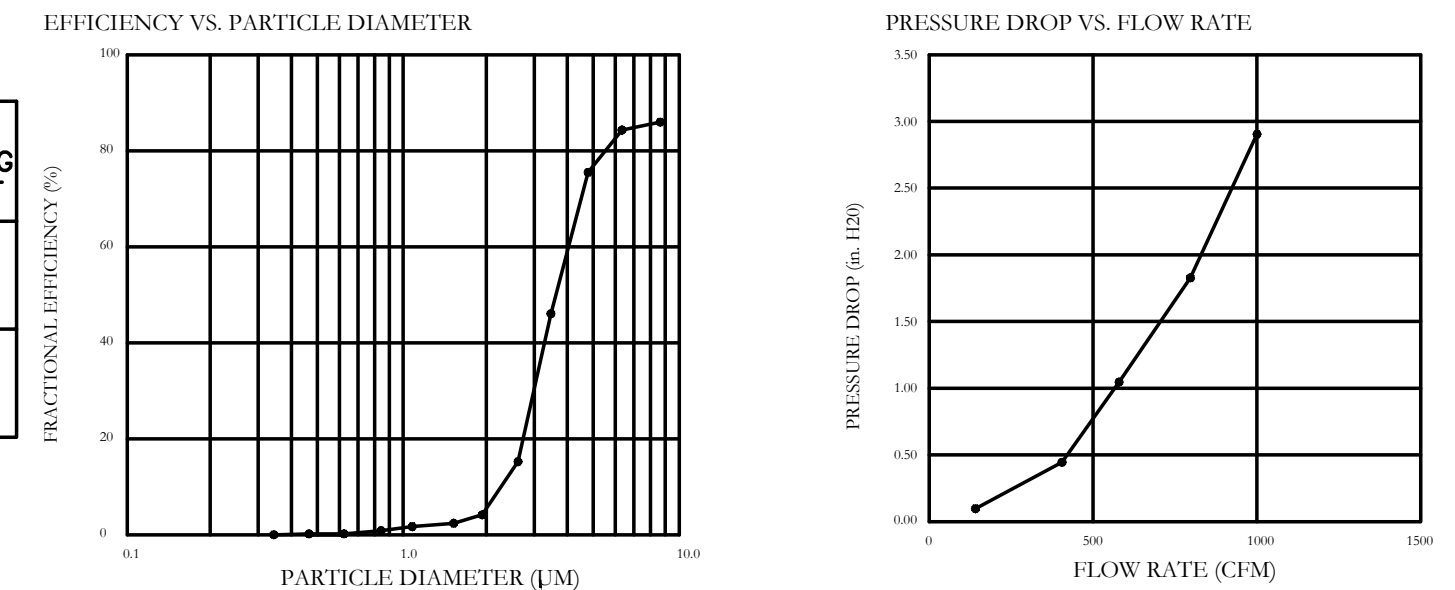
**HVAC DISTRIBUTION NOTE**  
HIGH VELOCITY DIFFUSERS OR HVAC RETURNS SHOULD NOT BE PLACED WITHIN TEN (10) FEET OF THE EXHAUST HOOD. PERFORATED DIFFUSERS ARE RECOMMENDED.

**VERIFY CEILING HEIGHT**  
\_\_\_\_' - \_\_\_\_"  
HEIGHT REQUIRED TO VERIFY THAT HOOD FITS SPACE AND TO SIZE THE ENCLOSURE PANELS

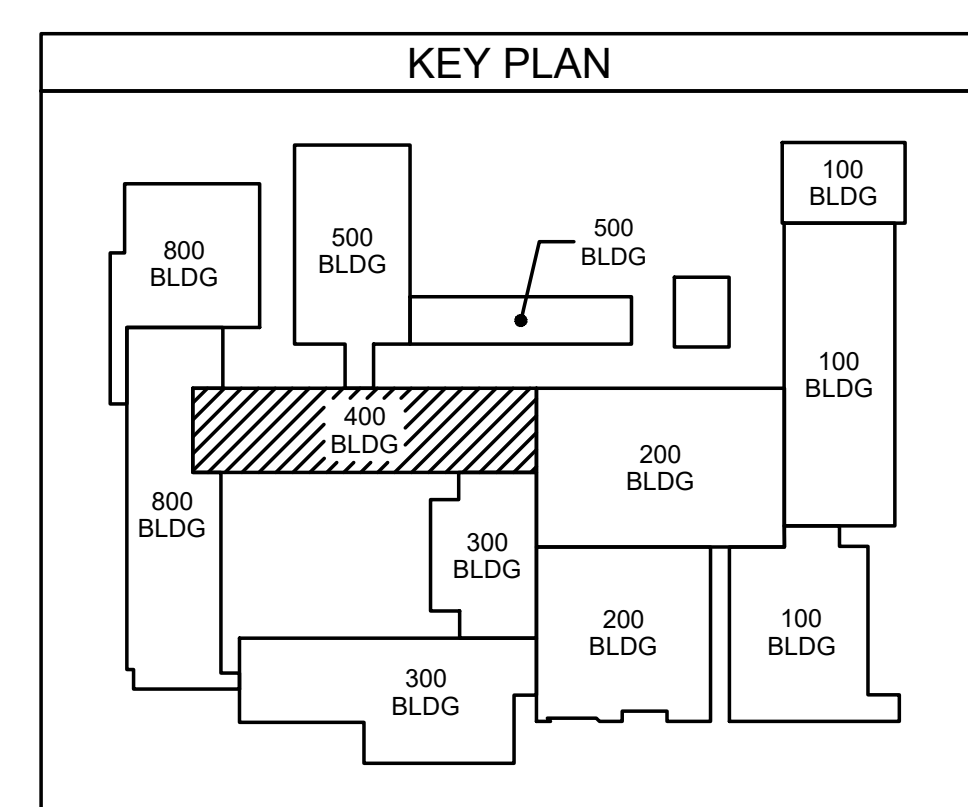
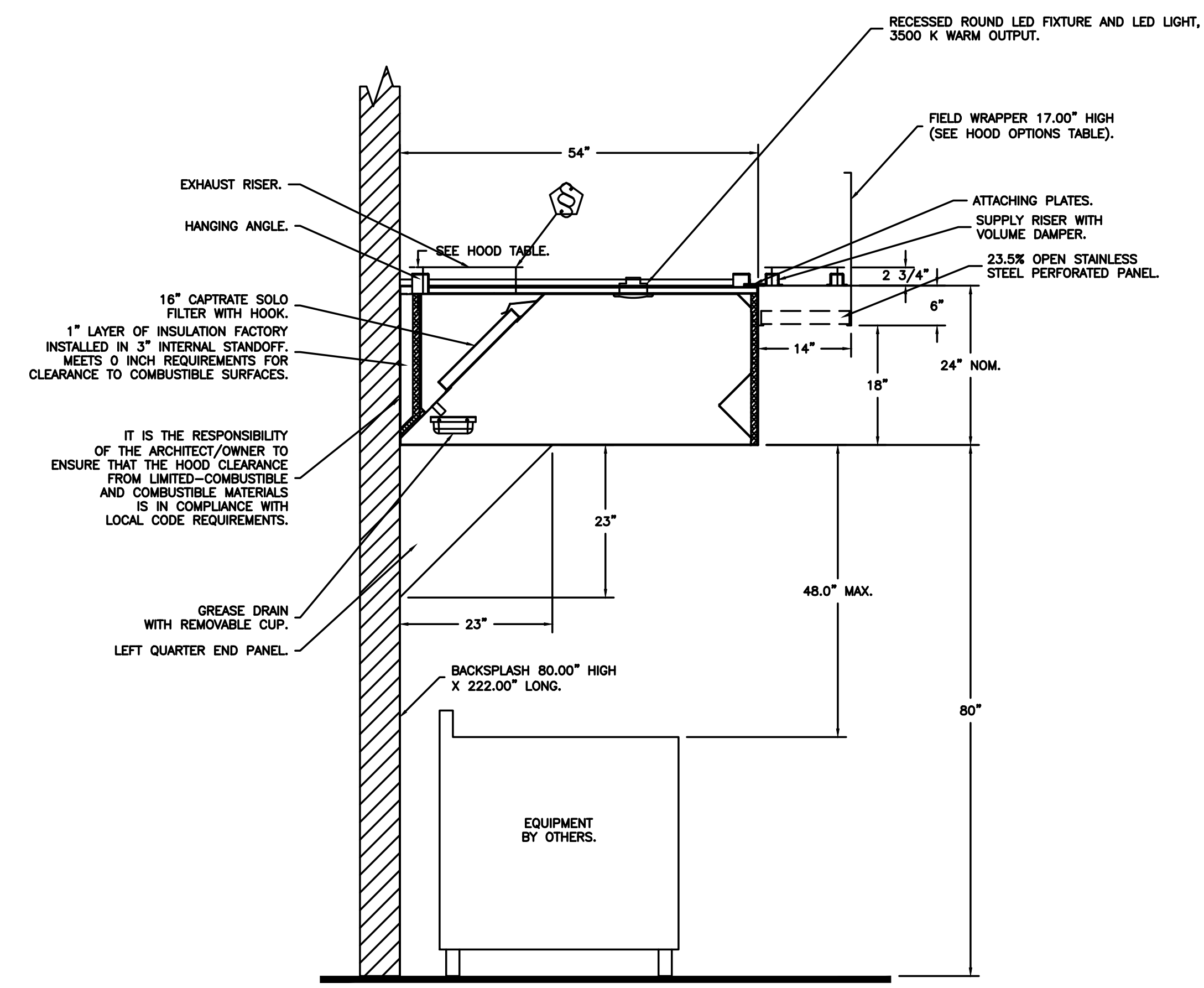
**CUSTOMER APPROVAL TO MANUFACTURE:**  
APPROVED AS NOTED   
APPROVED WITH NO EXCEPTION TAKEN   
REVISE AND RESUBMIT   
SIGNATURE \_\_\_\_\_  
YOUR TITLE \_\_\_\_\_ DATE \_\_\_\_\_

**SPECIFICATION: CAPTRATE GREASE-STOP SOLO FILTER**

THE CAPTRATE GREASE-STOP SOLO FILTER IS A SINGLE-STAGE FILTER FEATURING A UNIQUE S-BAFFLE DESIGN IN CONJUNCTION WITH A SLOTTED REAR BAFFLE DESIGN, TO DELIVER EXCEPTIONAL FILTRATION EFFICIENCY.  
FILTER IS STAINLESS STEEL CONSTRUCTION, AND SIZED TO FIT INTO STANDARD 2-INCH DEEP HOOD CHANNEL(S).  
UNITS SHALL INCLUDE STAINLESS STEEL HANDLES AND A FASTENING DEVICE TO SECURE THE TWO COMPONENTS WHEN ASSEMBLED.  
GREASE EXTRACTION EFFICIENCY PERFORMANCE SHALL REMOVE AT LEAST 75% OF GREASE PARTICLES FIVE MICRONS IN SIZE, AND 85% GREASE PARTICLES SEVEN MICRONS IN SIZE AND LARGER, WITH A CORRESPONDING PRESSURE DROP NOT TO EXCEED 1.0 INCHES OF WATER GAUGE.  
THE CAPTRATE GREASE-STOP SOLO WAS TESTED TO ASTM STANDARD ASTM F2519-05. MANUFACTURER APPROVED FOR USE IN SOLID FUEL APPLICATIONS AS A SPARK ARRESTER.



CAPTRATE FILTERS ARE BUILT IN COMPLIANCE WITH:  
NFPA #96.  
NSF STANDARD #2.  
UL STANDARD #1046.  
INT. MECH. CODE (IMC).  
ULC-S649.



ES Project No: ES21060  
102-42 Regency Blvd., Greensboro, NC 27434  
E-Mail Address: general@hiteassociates.com  
Web (919) 439-0338 • Fax (919) 439-0462 • Telex (919) 439-0338

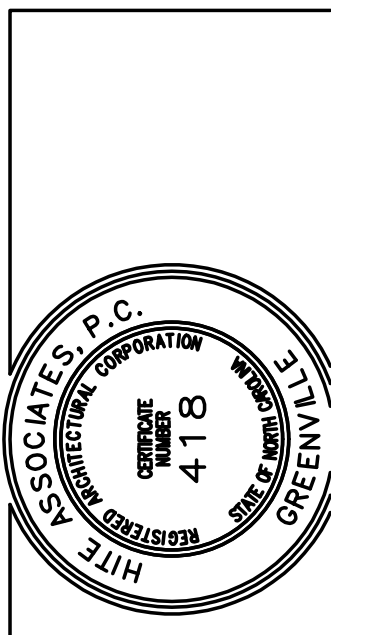
**ENGINEERING**  
SOURCE OF NC, P.A.

**Hite Associates**  
11/21/23

INFORMATION TAKEN FROM SIMILAR JOB BY CAPTIVEAIRE, INCLUDED FOR REFERENCE ONLY

No.	Date	Revision
3	11/21/23	ADDENDUM # 3
2	11/14/23	ADDENDUM # 2
1	11/09/23	ADDENDUM # 1

**Hite associates**  
ARCHITECTURE / PLANNING / TECHNOLOGY  
2600 Meridian Drive / Greenville, NC 27834 / Tel (252) 757-0333



New Additions & Renovations to  
**West Carteret High School**  
4700 Country Club Road, Morehead City, NC 28577  
Carteret County Schools / North Carolina

Project No: 22112  
Date: 03 Oct 2023  
Drawing No: **M 403**

THIS DRAWING IS THE PROPERTY OF ENGINEERING SOURCE OF NC, P.A. THIS DRAWING IS NOT TO BE COPIED IN WHOLE OR IN PART. THIS DRAWING OR THE INFORMATION HEREON IS NOT TO BE USED ON ANY OTHER PROJECT AND MUST BE RETURNED TO ENGINEERING SOURCE OF NC, P.A. UPON REQUEST. DO NOT SCALE THESE DRAWINGS. REFER TO ARCHITECTURAL DRAWINGS FOR EXACT DIMENSIONS.