

ROOM FINISH SCHEDULE

MARK	AREA	FLOOR	BASE	WALLS	CEILING	CLS HEIGHT	REMARKS
224	WOMEN	CER TILE	CER TILE	PAINTED / CER TILE	PAINTED STRUCTURE	VARIES	
235	OFFICE	EXIST	EXIST	PAINTED CMU	PAINTED STRUCTURE	VARIES	PAINT NEW WALL AREAS ONLY
250	GYMNASIUM	EXIST	EXIST	PAINTED CMU	PAINTED STRUCTURE	VARIES	PAINT NEW WALL AREAS ONLY - MATCH GRAPHICS
251	LOCKER ROOM	CER TILE	CER TILE	PAINTED CMU	PAINTED STRUCTURE	VARIES	
252	TOILET / SHOWERS	CER TILE	CER TILE	PAINTED / CER TILE	PAINTED STRUCTURE	VARIES	
253	TOILET / SHOWERS	CER TILE	CER TILE	PAINTED / CER TILE	PAINTED STRUCTURE	VARIES	
254	LOCKER ROOM	CER TILE	CER TILE	PAINTED CMU	PAINTED STRUCTURE	VARIES	PAINT NEW WALL AREAS ONLY
255	LOCKER ROOM	CER TILE	CER TILE	PAINTED CMU	PAINTED STRUCTURE	VARIES	
256	TOILET / SHOWERS	CER TILE	CER TILE	PAINTED / CER TILE	PAINTED STRUCTURE	VARIES	
257	LOCKER ROOM	CER TILE	CER TILE	PAINTED CMU	PAINTED STRUCTURE	VARIES	
258	TOILET / SHOWERS	CER TILE	CER TILE	PAINTED / CER TILE	PAINTED STRUCTURE	VARIES	
259	LOCKER ROOM	CER TILE	CER TILE	PAINTED CMU	PAINTED STRUCTURE	VARIES	
260	TOILET / SHOWERS	CER TILE	CER TILE	PAINTED / CER TILE	PAINTED STRUCTURE	VARIES	
261	CUSTODIAN	CER TILE	CER TILE	PAINTED CMU	PAINTED STRUCTURE	VARIES	
262	MEN	CER TILE	CER TILE	PAINTED / CER TILE	PAINTED STRUCTURE	VARIES	
263	LAUNDRY	CER TILE	CER TILE	PAINTED CMU	PAINTED STRUCTURE	VARIES	
264	UNIFORM STORAGE	VCT	4" RUBBER	PAINTED CMU	PAINTED STRUCTURE	VARIES	
265	STORAGE	VCT	4" RUBBER	PAINTED CMU	PAINTED STRUCTURE	VARIES	
266	STORAGE	VCT	4" RUBBER	PAINTED CMU	PAINTED STRUCTURE	VARIES	
NOTES							
1	OVERHEAD PLATFORM AND ACCESS AREAS: PAINT STEEL STAIRS AND RAILS AS SPECIFIED AND PROVIDE (2) COATS GLOSS POLYURETHANE FLOOR SEALER AS SPECIFIED FOLLOWING FINAL GYPBOARD CEILINGS AND BULKHEADS: PAINT FLAT WHITE LATEX, NO TEXTURE, USE STRAIGHT CORNER BEADS, NO BULLNOSE EXCEPT WHERE INDICATED						
2	GYPBOARD CEILINGS AND BULKHEADS: PAINT FLAT WHITE LATEX, NO TEXTURE, USE STRAIGHT CORNER BEADS, NO BULLNOSE EXCEPT WHERE INDICATED						

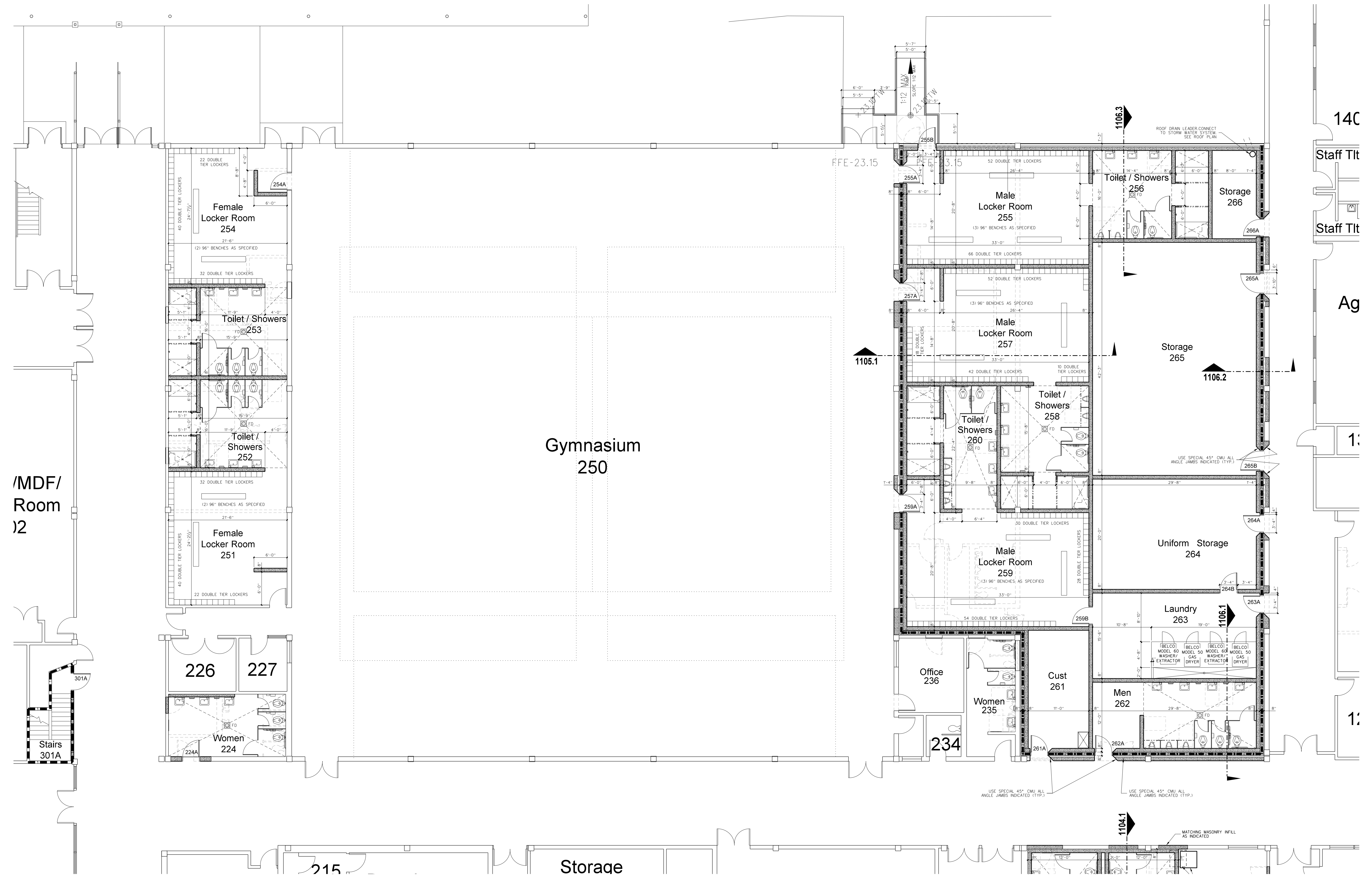
ABBREVIATIONS

- CB CHALKBOARD
- MB MARKERBOARD
- SMTBD SMARTBOARD
- VDB VISUAL DISPLAY MONITOR
- MVDM MOBILE VISUAL DISPLAY MONITOR
- TB TACK BOARD
- BK BOOKCASE
- CU CUBBIES
- IABW INTERACTIVE WHITE BOARD
- FSTV FLAT SCREEN T.V.
- MT METAL THRESHOLD W/ 1/2" MAX. LIP
- RT RUBBER TRANSITION W/ 1/2" MAX. LIP
- FEC FIRE EXTINGUISHER CABINET
- C.J. CONTROL JOINT
- E.J. EXPANSION JOINT
- TD TRAVEL DISTANCE

SEE SHEET T-1 FOR ADDITIONAL ABBREVIATIONS

WALL LEGEND

- 12" CMU WALL
- 10" CMU WALL
- 8" CMU WALL
- 6" CMU WALL
- 6" METAL STUD WALL WITH GYPBOARD EACH SIDE WITH SOUND ATTENUATION BATTS
- 3 5/8" METAL STUD WALL WITH GYPBOARD EACH SIDE WITH SOUND ATTENUATION BATTS
- ONE HOUR RATED FIRE BARRIER
- TWO HOUR RATED FIRE WALL
- SMOKE TIGHT CONSTRUCTION WALLS



201.1 200 UNIT FLOOR PLAN
SCALE: 1/8" = 1'-0"

	2 11-16-23 Revised per Addendum *3
	1 11-9-23 Revised per Addendum *1
No.	Date
Revision	

Hite associates
ARCHITECTURE / PLANNING / TECHNOLOGY
2600 Meridian Drive / Greenville, NC 27834 / tel(252) 757-0333

New Gymnasium Additions to
West Carteret High School
4700 Country Club Road, Morehead City, NC 28577
Carteret County Schools / North Carolina

Project No. 22112

Date: 18 August 2022

Drawing no. **A 201**