

# Edgecombe County Animal Shelter

3005 Anaconda Rd  
Tarboro, NC

## Addendum #2 8.14.2024

---

### Addenda:

1. Revised Drawing List

This revision revised the roof plan for the small dog holding and mechanical room spaces to allow for simpler framing.

A-101 Floor Plan

A-103 Roof plan

A-201 Elevations

A-202 Elevation

2. Allowance : please add a \$10,000 allowance for code minimum required landscaping

3. Fencing Specification – clarification, the property perimeter fence is to be 8’ black coated 2” medium duty chain link with black posts. The interior play yards are to be 6’ black coated 2” medium duty chain link with black post. The driveway gates will be galvanized cantilever type. Access control: All exterior doors and fence gates at driveways.

Jerry Coats - Service Manager

Envirocon, Inc.

P.O. Box 7349

4343 St. Mary’s Church Rd.

Wilson, NC 27895-7349

Office: 252.291.9579

Mobile: 910.237.6702

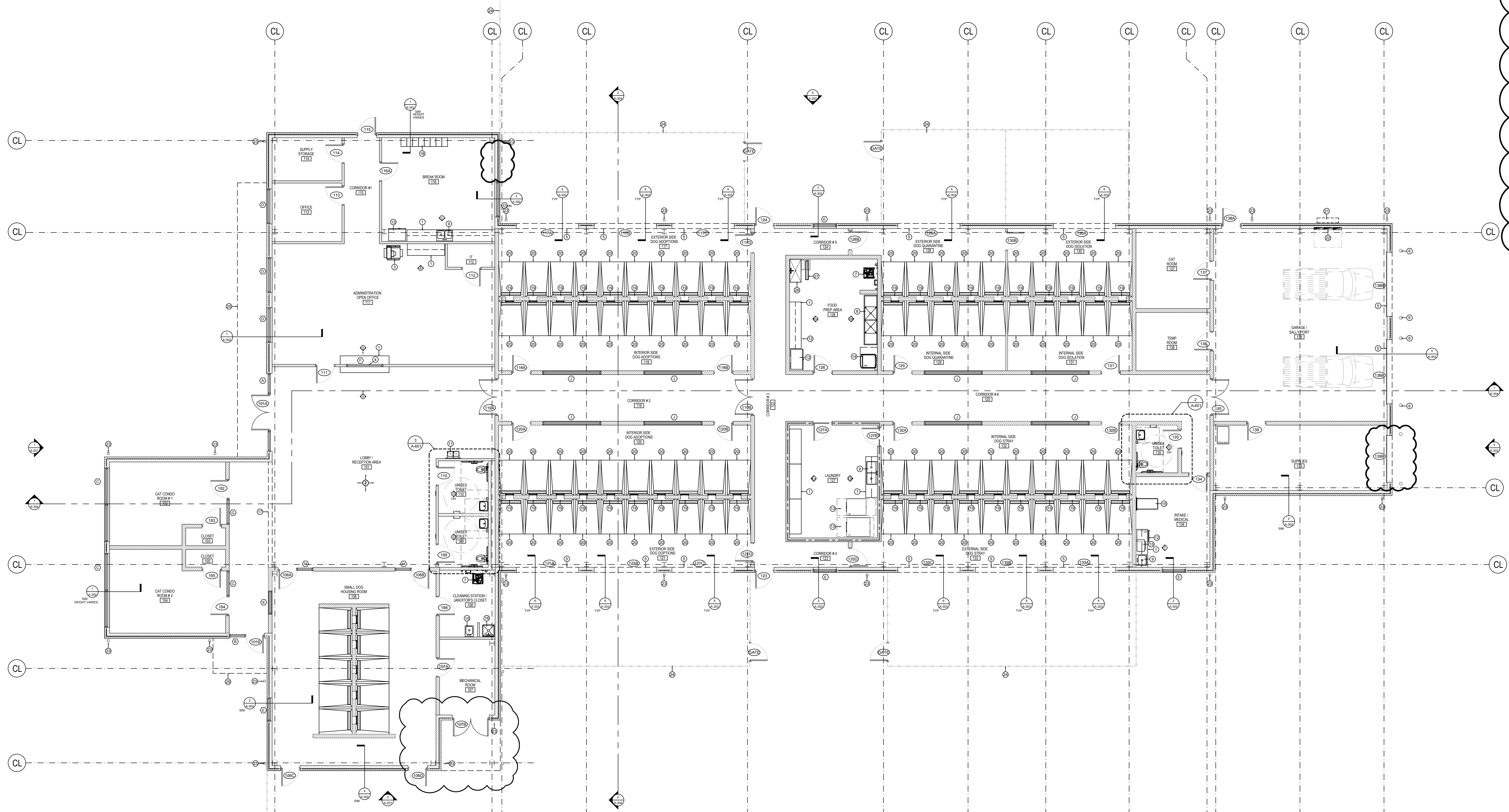
Fax: 252.291.6224

Email: [jerry@envirocon.net](mailto:jerry@envirocon.net)

Visit us @: <http://www.envirocon.net/>

Reference all Addenda on Project Bid Submittal Cover Sheet.

**END OF ADDENDA #2**



**CONSTRUCTION PLAN  
KEYNOTES**

- CASEWORK BY G.C. SEE 4000 DRAWING SHEETS FOR MILLWORK DETAILS AND ELEVATIONS
- FURNITURE BY OWNER THROUGHOUT. COORDINATE WITH FINISH SCHEDULE AND FINISH PLAN
- COPY MACHINE BY OWNER
- TRANSACTION WINDOW WITH TRANSACTION COUNTER. SEE WINDOW SCHEDULE FOR MORE INFORMATION
- ROLL UP DOORS. SEE DOOR SCHEDULE FOR MORE INFORMATION
- BOLLARD. SEE DETAIL 20A-02
- SPRAY MASTER SYSTEM. SEE PLUMBING DRAWINGS FOR MORE INFORMATION
- 2 COMPARTMENT SINK @ FOOD PREP AREA. SEE PLUMBING FOR MORE INFORMATION
- DROP IN SINK AT MILLWORK. SEE PLUMBING DRAWINGS FOR MORE INFORMATION
- WALL MOUNTED LAVATORIES. SEE PLUMBING DRAWINGS FOR MORE INFORMATION
- H/O DRINKING FOUNTAIN WITH INTEGRATED BOTTLE FILLING STATION. SEE PLUMBING DRAWINGS FOR MORE INFORMATION. SEE SHEET G-106 FOR DRINKING FOUNTAIN ADA REQUIREMENTS
- GC FURNISHED ALLOWANCE FOR APPLIANCES TO BE SELECTED BY OWNER
- COMMERCIAL WASHER AND DRYER BY GC - INSTALLED BY G.C.; SEE EQUIPMENT SCHEDULE FOR MORE INFORMATION
- COMMERCIAL DISHWASHER BY GC - INSTALLED BY G.C.; SEE EQUIPMENT SCHEDULE FOR MORE INFORMATION
- VETERINARIAN EQUIPMENT. PROVIDE BLOCKING @ ALL MILLWORK & EQUIPMENT AS REQUIRED. SEE SHEETS A-502
- JANITORS SINK. SEE PLUMBING DRAWINGS FOR MORE INFORMATION
- LINE OF FINISHED BULKHEAD & SOFFIT ABOVE. SEE RCP FOR MORE INFORMATION
- STAFF LOCKERS BY OWNER
- GULLOTINE KENNEL DOORS. SEE DETAILS 3A-502 FOR MORE INFORMATION
- DOG RUN SLOPED TO INDIVIDUAL FLOOR TRENCH DRAIN. SEE DETAIL 2A-03; SEE EQUIPMENT SCHEDULE FOR MORE INFORMATION
- APPROXIMATE LOCATION OF ELECTRICAL SERVICE TO BUILDING. SEE CIVIL DRAWINGS FOR MORE INFORMATION
- ELECTRICAL PANELS. SEE ELECTRICAL DRAWINGS FOR MORE INFORMATION
- DOWNSPOUTS. SEE ROOF PLAN FOR MORE INFORMATION
- 8" BLACK COATED CHAIN LINK FENCING WITH THE OPTION FOR PRIVACY SLATS TO BE INSERTED - SEE CIVIL PLANS FOR ELECTRIC GATE LOCATIONS
- MARPS SUPER LUMIDECK CANTILEVER CANOPY IS THE BASIS OF DESIGN. SEE ELEVATIONS AND PLAN / SECTION DETAILS. 4-6A-502 FOR MORE INFORMATION.
- GROOMING TUB. SEE PLUMBING FOR MORE INFORMATION
- EXTERIOR DRAWING ROOMING TUB
- LINE OF FUTURE EXPANSION AREA

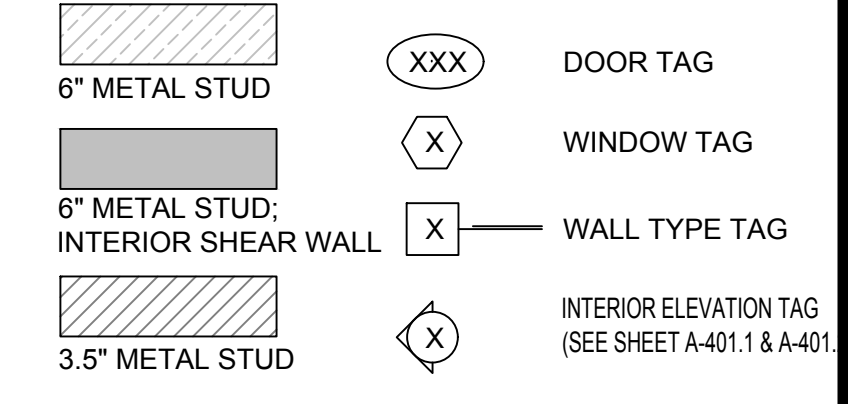
**CONSTRUCTION GENERAL NOTES**

- CONFLICTS BETWEEN SITE CONDITIONS AND DRAWINGS SHALL BE BROUGHT TO THE IMMEDIATE ATTENTION OF THE ARCHITECT.
- ALL WORK SHALL BE ERRECTED AND INSTALLED PLUMB, LEVEL, SQUARE AND TRUE AND IN PROPER ALIGNMENT, U.N.O.
- ALL FURNITURE BY OWNER
- SEE FINISH SCHEDULE FOR CORNER GUARD SPEC. 8" LONG TYPICAL THROUGHOUT TREATMENT AND BACK OF HOUSE SPACE. TYPICAL
- ALL DIMENSIONS ARE TO FACE OF STUDS, U.N.O. DIMENSIONS NOTED "HOLD" MUST BE ACCURATELY MAINTAINED AND SHALL NOT VARY MORE THAN ± 1/8" WITHOUT WRITTEN INSTRUCTION FROM ARCHITECT. "ALIGN" MEANS TO ACCURATELY LOCATE FINISHED FACES IN THE SAME PLANE. DIMENSIONS NOTED "CLEAR" ARE MINIMUM DIMENSIONS WHICH MUST BE MAINTAINED WITHOUT EXCEPTION. DIMENSIONS MARKED ± MEAN A VARIANCE NOT GREATER THAN 1/8" INCH. VERIFY DIMENSIONS EXCEEDING TOLERANCE WITH ARCHITECT. ALL DIMENSIONS TO THE EXTERIOR WINDOW WALL ARE TO THE FACE OF STUDS, U.N.O.
- GLASS TYPES AS NOTED ON GLASS SCHEDULE A-01
- PROVIDE BLOCKING IN STUD WALL FRAMING FOR SUPPORT OF CASEWORK, SHELF-STANDARDS, AV DEVICES, FURNITURE, ETC. ALL CONCEALED LUMBER AND BLOCKING TO BE FIRE TREATED. COORDINATE BLOCKING REQUIREMENTS WITH FURNITURE & AV INSTALLERS. WHERE BLOCKING OR ADDITIONAL STUDS ARE REQUIRED AT EXISTING PARTITIONS, THEY ARE TO BE PATCHED AND REPAIRED. SEE CONSTRUCTION PLANS FOR WALL-MOUNTED MONITORS & SCREENS. PROVIDE BLOCKING PER MANUFACTURERS INSTRUCTIONS
- ALL HINGED DOORS TO BE 4" FROM NEAREST PERPENDICULAR PARTITION. U.N.O. DIMENSIONS LOCATING DOORS ARE TO THE INSIDE EDGE OF JAMB. ALL DOORS SHALL HAVE 1'-0" CLEAR ON THE STRIKE/PULL SIDE OF DOOR AND 1'-0" CLEAR ON THE STRIKE/PUSH SIDE IF THEY HAVE BOTH A LATCH AND A CLOSER. VERIFY AND ADVISE ARCHITECT OF EXCEPTIONS PRIOR TO CLOSING OUT PARTITIONS.
- THE CONTRACTOR SHALL ESTABLISH A SINGLE FLOOR ELEVATION THAT IS TO BE USED TO SET THE TOP OF ALL DOORS SUCH THAT THE TOP OF ALL DOORS OF THE SAME HEIGHT WILL ALIGN REGARDLESS OF VARIATIONS IN THE FLOOR SLAB OR FINISHED FLOOR THICKNESS.
- PROVIDE VERTICAL CONTROL JOINTS 30" O.C. MAX. IN ALL GWB PARTITIONS LONGER THAN 30'. WHEN POSSIBLE CONTROL JOINTS SHOULD BE LOCATED ABOVE THE CORNER OF A DOOR.
- ALL SIDEWALKS TO DRAIN AWAY FROM EXTERIOR DOORS.
- EXTERIOR GRADES TO BE MINIMUM 6" BELOW FINISHED FLOOR.

**PARTITION GENERAL NOTES**

- SEE SHEET A-301 FOR WALL TYPE DETAILS
- PARTITION DEPTH AT FIRE EXTINGUISHER CABINET LOCATIONS SHALL ACCOMMODATE FULL CONCEALMENT OF RECESSED CABINETS OR PARTIAL CONCEALMENT OF SEM-RECESSED CABINETS AS SPECIFIED BY THE MANUFACTURER.
- ALL PARTITIONS ABUTTING COLUMNS ARE TO ALIGN WITH THE FACE OF THE COLUMN, U.N.O.
- ALL GYPSUM BOARD PARTITIONS SHALL BE TAPED AND SANDED SMOOTH WITH NO VISIBLE JOINTS. PROVIDE LEVEL 4 FINISH UNO - REFER TO ELEVATIONS AND THE MATERIAL SCHEDULE FOR MATERIALS THAT REQUIRE A LEVEL 3 FINISH.
- ALL EXPOSED GYPSUM BOARD EDGES TO HAVE VINYL OR METAL EDGE TRIM.
- REFER TO THE PARTITION TYPES FOR PARTITION THICKNESS.
- ARCHITECT SHALL REVIEW ON SITE THE PARTITION LAYOUT PRIOR TO PARTITION INSTALLATION.
- CONSTRUCTION OF FIRE-RATED PARTITIONS, INCLUDING TAPING AND FINISHING OF GYPSUM WALLBOARD FOR FULL HEIGHT TO STRUCTURE ABOVE, SHALL BE IN ACCORDANCE WITH UL SPECIFICATIONS TO ACHIEVE RATING INDICATED.
- ACOUSTICAL (SOUND-ISOLATION) PARTITIONS SHALL BE SEALED FOR FULL HEIGHT TO PREVENT PASSAGE OF AIRBORNE SOUND. TAPE AND FINISH ALL GYPSUM WALLBOARD JOINTS AND FASTENERS INCLUDING ABOVE SUSPENDED CEILING. CAULK AT PERIMETER AND SEAL AT ALL PENETRATIONS.
- PROVIDE DOUBLE STUDS AT DOOR JAMBS. INSTALL ADDITIONAL STUDS IN EXISTING PARTITIONS AT NEW DOOR OPENINGS IN ORDER TO PROVIDE DOUBLE STUDS AT JAMBS.
- PROVIDE DIAGONAL STUD BRACING TO SLAB ABOVE @ 48" O.C. AT DROP ARCHES/BULKHEADS.
- MIR TYPE GYPSUM WALLBOARD AT BOTH SIDES OF ALL PARTITIONS WITH PLUMBING ROUGHING (E.G. BATHROOMS, PANTRY, JANITOR, ETC.)

**CONSTRUCTION LEGEND:**



1 FLOOR PLAN 1/8" = 1'-0"

**EDGCOMBE COUNTY  
ANIMAL SHELTER  
3005 ANACONDA ROAD  
TARBORO, NC 27886**

VETERINARY ARCHITECTURE  
*Unleashed*  
A DIVISION OF RL ARCHITECTURE, PLLC

**RL ARCHITECTURE, PLLC**  
PO Box 161  
Davidson, NC 28036  
ph. 704.756.3540  
RLArchitecture.com

DRAWING TITLE:  
**FLOOR PLAN**

THIS DRAWING IS THE PROPERTY OF RL ARCHITECTURE, PLLC AND IS NOT TO BE COPIED OR REPRODUCED IN PART OR WHOLE WITHOUT THE EXPRESSED WRITTEN PERMISSION OF RL ARCHITECTURE, PLLC.

**BID SET 7.22.2024**

NO.	DATE	REVISIONS DESCRIPTION
1	8.7.24	COORDINATION
2	8.14.24	REV 2

DATE: 7.21.2024  
PROJECT # 2022.74  
SCALE: AS NOTED  
DRAWN BY: RL

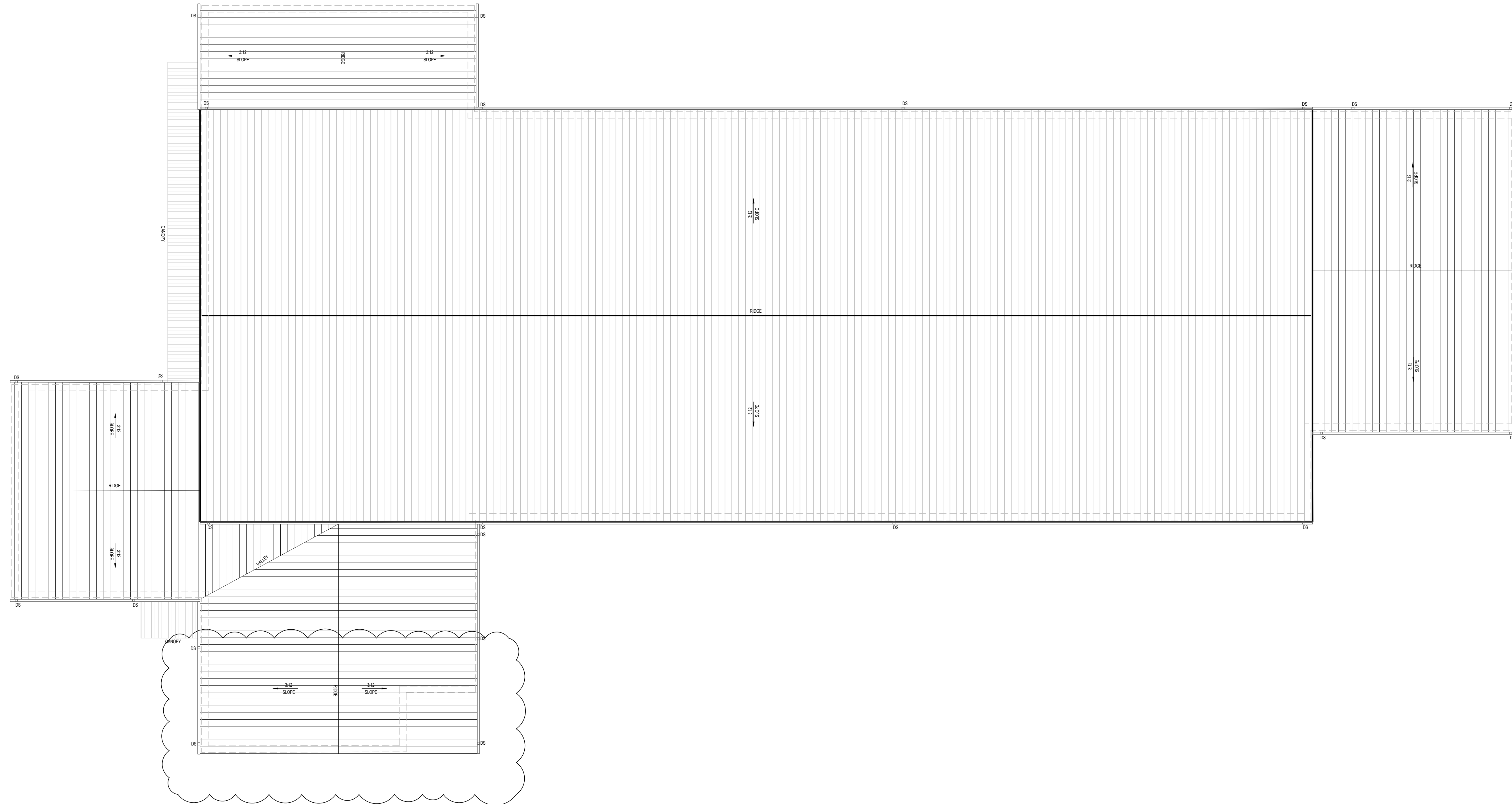
**A-101**

○ ROOF PLAN NOTES:

1. BUTLER ROOF SYSTEM MR24 - BASIS OF DESIGN
2. RUN DOWNSPOUT UNDER/THROUGH SIDEWALK TO SPILL INTO GRASS YARD.
3. LINE OF CANOPY / AWNING BELOW - SEE SPECS.
4. WALL BELOW

GENERAL NOTES:

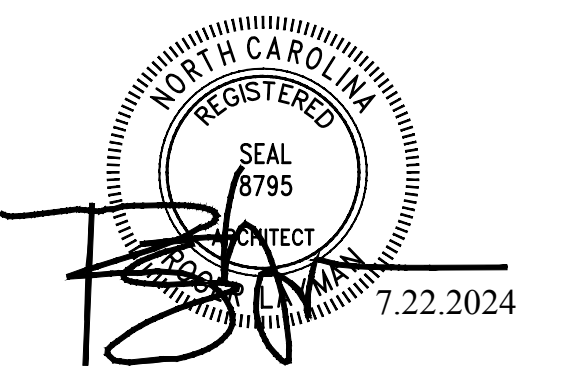
1. G.C. TO IDENTIFY AND COORDINATE LOCATIONS OF ALL REQUIRED CONDENSERS AND CONDENSER LINE
2. COORDINATE LOCATIONS OF ROOFTOP EQUIPMENT WITH STRUCTURAL DESIGN & HVAC.
3. MAINTAIN A MINIMUM 10'-0" CLEARANCE FROM ANY EXHAUST OR PLUMBING VENT TO ANY FRESH AIR INTAKE (TYP.)
4. MAINTAIN A MINIMUM 10'-0" CLEARANCE FROM SERVICEABLE ROOF TOP EQUIPMENT TO EDGE OF ROOF, TYP.



EDGECOMBE COUNTY  
ANIMAL SHELTER  
3005 ANACONDA ROAD  
TARBORO, NC 27886



RLARCHITECTURE, PLLC  
PO Box 161  
Davidson, NC 28036  
ph. 704.756.3540  
RLArchitecture.com



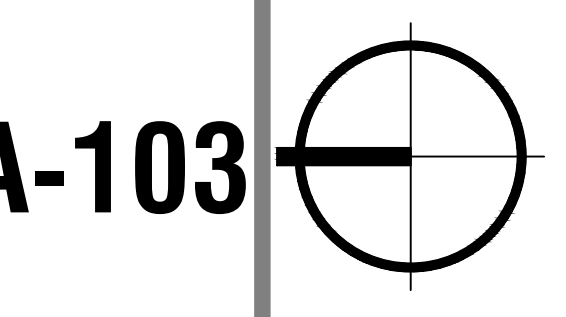
DRAWING TITLE:  
**ROOF PLAN**

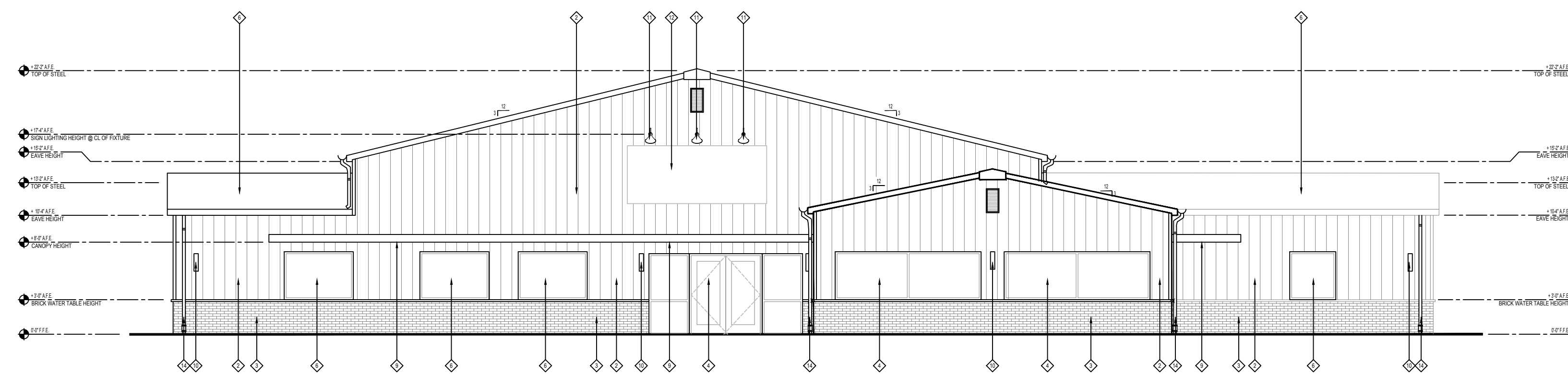
THIS DRAWING IS THE PROPERTY OF RLArchitecture, PLLC AND IS NOT TO BE COPIED OR REPRODUCED IN PART OR WHOLE WITHOUT THE EXPRESSED WRITTEN PERMISSION OF RLArchitecture, PLLC.

**BID SET 7.22.2024**

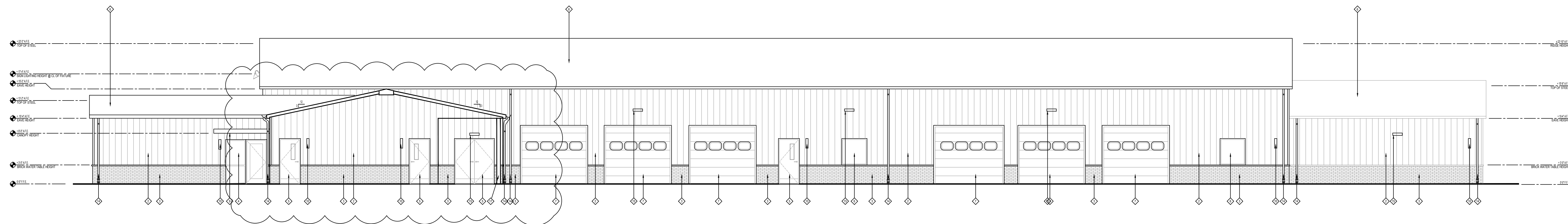
REVISIONS	
NO.	DESCRIPTION
1	REV 2

DATE: 7.21.2024  
PROJECT # 2022.74  
SCALE: AS NOTED  
DRAWN BY: RL





1 FRONT ELEVATION  
A-201 1/4" = 1'-0"



2 RIGHT SIDE ELEVATION  
A-201 1/8" = 1'-0"

EXTERIOR MATERIALS SCHEDULE	
ITEM	INFORMATION
PEMB METAL ROOF	BUTLER MR24 ROOF SYSTEM, COLOR TBD
VERTICAL METAL WALL PANEL SYSTEM	BUTLER RIB II EX WALL PANEL, COLOR: TBD
FIELD BRICK VENEER	PINEHALL BRICK, SPEKTRA WIRE CUT FULL RANGE
WATER TABLE	
STOREFRONT	CLEAR ALUMINUM WITH 1" INSULATED LOW E CLEAR GLASS
NOTE:	
1. THE ABOVE SCHEDULE OF EXTERIOR MATERIALS ARE USED IN THE NEW BUILDING. MATERIALS WILL BE COORDINATED WITH OWNER IN STYLE AND COLOR. U.N.O. ALL MANUFACTURERS LISTED TO SERVE AS A DESIGN BASIS. G.C. TO PROVIDE EQUAL PRODUCT AT A COST SAVINGS WHERE APPLICABLE.	
2. ANY SUBSTITUTIONS TO THE ABOVE SHALL BE SUBMITTED IN WRITING TO THE ARCHITECT AND APPROVED IN WRITING BY THE OWNER PRIOR TO ORDER OR INSTALLATIONS.	
3. ALL MATERIALS SHALL BE INSTALLED AND / OR APPLIED PER MANUFACTURER'S INSTRUCTIONS AND RECOMMENDATIONS.	
TAG	MATERIAL
1	PEMB ROOF PANEL SYSTEM
2	BUTLER RIB II EX WALL PANEL - COLOR: TBD
3	BRICK VENEER WATER TABLE
4	ALUMINUM STOREFRONT DOOR / WINDOW; SEE WINDOW SCHEDULE, SHEET A-601 FOR MORE INFORMATION
5	HOLLOW METAL DOOR & FRAME - PAINT SANDSTONE; SEE DOOR SCHEDULE, SHEET A-601 FOR MORE INFORMATION
6	ALUMINUM WINDOW; SEE WINDOW SCHEDULE, SHEET A601 FOR MORE INFORMATION
7	ROLL UP DOOR; SEE DOOR SCHEDULE AND SPECIFICATIONS FOR MORE INFORMATION
8	BOLLARDS; SEE DETAIL 2/A-502 FOR MORE INFORMATION
9	CANOPY; SEE DETAILS 4 -5/A-502 FOR MORE INFORMATION
10	UP/DOWN LIGHT MOUNTED @ CENTERLINE OF FIXTURE 7'-6" A.F.F.; SEE ELECTRICAL DRAWINGS
11	SIGN LIGHT MOUNTED @ CENTERLINE OF FIXTURE 20'-5" A.F.F.; SEE ELECTRICAL DRAWINGS
12	WALL MOUNTED EXTERIOR SIGNAGE
13	APPROXIMATE LOCATION OF ELECTRICAL METERS
14	DOWNSPOUT, COLOR TO MATCH ADJACENT WALL
15	WALL PACK LIGHTING
16	GABLE VENT
17	STRUCTURAL COLUMN AT MECHANICAL PORCH; SEE STRUCTURAL AND PEMB DRAWINGS FOR MORE INFORMATION
18	
19	
20	
21	
22	
23	
24	
25	
26	
27	
28	
30	
31	



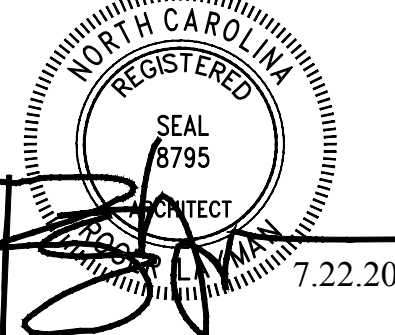
EDGECOMBE COUNTY  
ANIMAL SHELTER  
3005 ANACONDA ROAD  
TARBORO, NC 27886



RLARCHITECTURE, PLLC

PO Box 161  
Davidson, NC 28036

ph. 704.756.3540  
RLArchitecture.com



DRAWING TITLE:

EXTERIOR ELEVATIONS

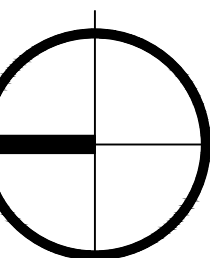
THIS DRAWING IS THE PROPERTY OF RLArchitecture, PLLC AND IS NOT TO BE COPIED OR REPRODUCED IN PART OR WHOLE WITHOUT THE EXPRESSED WRITTEN PERMISSION OF RLArchitecture, PLLC.

BID SET 7.22.2024

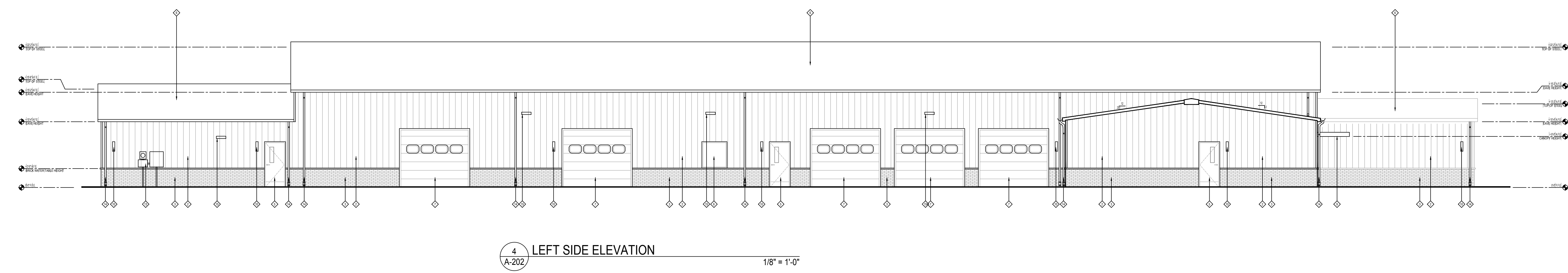
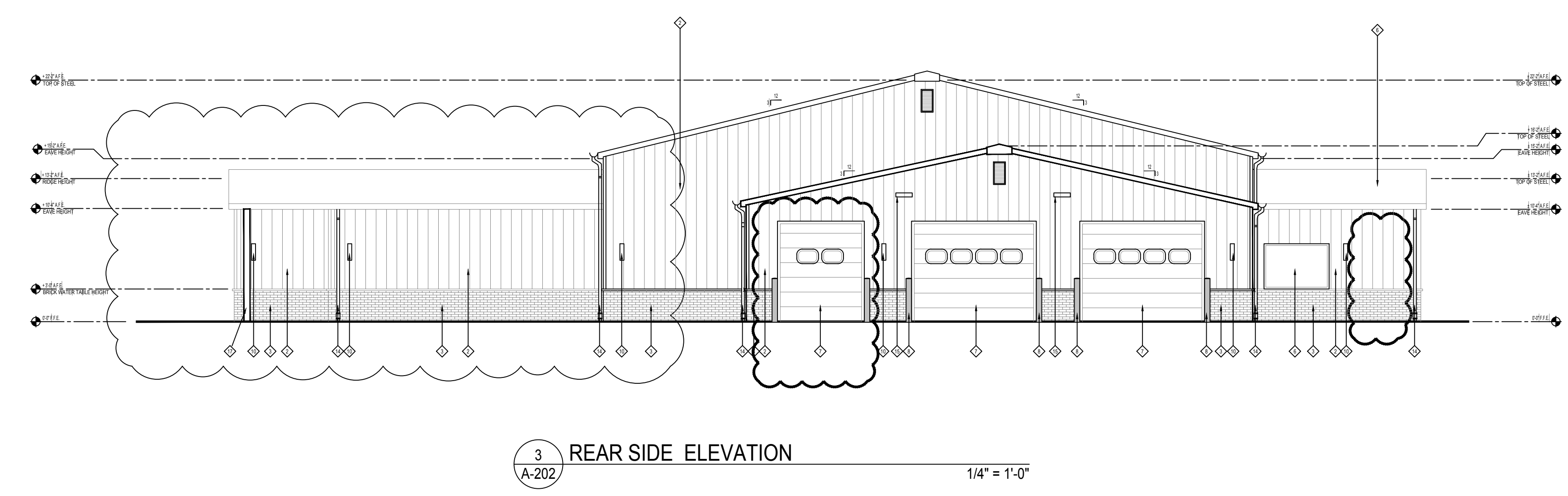
REVISIONS		
NO.	DATE	DESCRIPTION
1	8.14.24	REV 2

DATE: 7.21.2024  
PROJECT #: 2022.74  
SCALE: AS NOTED  
DRAWN BY: RL

A-201



EXTERIOR MATERIALS SCHEDULE	
ITEM	INFORMATION
PEMB METAL ROOF	BUTLER MR24 ROOF SYSTEM, COLOR TBD
VERTICAL METAL WALL PANEL SYSTEM	BUTLER RIB II EX WALL PANEL, COLOR TBD
FIELD BRICK VENEER	PINEHALL BRICK, SPEKTRA WIRE CUT FULL RANGE
WATER TABLE	CLEAR ALUMINUM WITH 1" INSULATED LOW E CLEAR GLASS
STOREFRONT	
NOTE:	
1. THE ABOVE SCHEDULE OF EXTERIOR MATERIALS ARE USED IN THE NEW BUILDING. MATERIALS WILL BE COORDINATED WITH OWNER IN STYLE AND COLOR. U.N.O. ALL MANUFACTURERS LISTED TO SERVE AS A DESIGN BASIS. G.C. TO PROVIDE EQUAL PRODUCT AT A COST SAVINGS WHERE APPLICABLE.	
2. ANY SUBSTITUTIONS TO THE ABOVE SHALL BE SUBMITTED IN WRITING TO THE ARCHITECT AND APPROVED IN WRITING BY THE OWNER PRIOR TO ORDER OR INSTALLATIONS.	
3. ALL MATERIALS SHALL BE INSTALLED AND / OR APPLIED PER MANUFACTURER'S INSTRUCTIONS AND RECOMMENDATIONS.	
TAG	MATERIAL
1	PEMB ROOF PANEL SYSTEM
2	BUTLER RIB II EX WALL PANEL - COLOR: TBD
3	BRICK VENEER WATER TABLE
4	ALUMINUM STOREFRONT DOOR / WINDOW; SEE WINDOW SCHEDULE, SHEET A-601 FOR MORE INFORMATION
5	HOLLOW METAL DOOR & FRAME - PAINT SANDSTONE; SEE DOOR SCHEDULE, SHEET A-601 FOR MORE INFORMATION
6	ALUMINUM WINDOW; SEE WINDOW SCHEDULE, SHEET A601 FOR MORE INFORMATION
7	ROLL UP DOOR; SEE DOOR SCHEDULE AND SPECIFICATIONS FOR MORE INFORMATION
8	BOLLARDS; SEE DETAIL 2/A-502 FOR MORE INFORMATION
9	CANOPY; SEE DETAILS 4 -5/A-502 FOR MORE INFORMATION
10	UP/DOWN LIGHT MOUNTED @ CENTERLINE OF FIXTURE 7'-6" A.F.F.; SEE ELECTRICAL DRAWINGS
11	SIGN LIGHT MOUNTED @ CENTERLINE OF FIXTURE 20'-5" A.F.F.; SEE ELECTRICAL DRAWINGS
12	WALL MOUNTED EXTERIOR SIGNAGE
13	APPROXIMATE LOCATION OF ELECTRICAL METERS
14	DOWNSPOUT, COLOR TO MATCH ADJACENT WALL
15	WALL PACK LIGHTING
16	GABLE VENT
17	STRUCTURAL COLUMN AT MECHANICAL PORCH; SEE STRUCTURAL AND PEMB DRAWINGS FOR MORE INFORMATION
18	
19	
20	
21	
22	
23	
24	
25	
26	
27	
28	
29	
30	
31	



DRAWING TITLE:  
**EXTERIOR ELEVATIONS**

THIS DRAWING IS THE PROPERTY OF RLArchitecture, PLLC AND IS NOT TO BE COPIED OR REPRODUCED IN PART OR WHOLE WITHOUT THE EXPRESSED WRITTEN PERMISSION OF RLArchitecture, PLLC.

**BID SET 7.22.2024**

NO.	DATE	REVISIONS DESCRIPTION
1	8.7.24	COORDINATION
2	8.14.24	REV 2

DATE: 7.21.2024  
PROJECT # 2022.74  
SCALE: AS NOTED  
DRAWN BY: RL