

300-1243

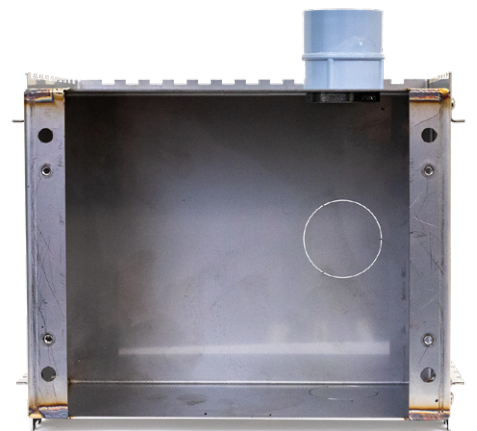
CONSTRUCTION SLEEVE

300-1243
Construction Sleeve



FEATURES:

- » Stainless Steel *Construction Sleeve* for installation during wall construction
- » For use in all wall types
- » Includes optional *Mortar Grippers* for Block/CMU construction
- » Includes *Chase Guide* for installation of required 2" Chase
- » Required for use of *Recessed Remote Stations* in new construction



(800) 548-3373

www.spraymastertech.com

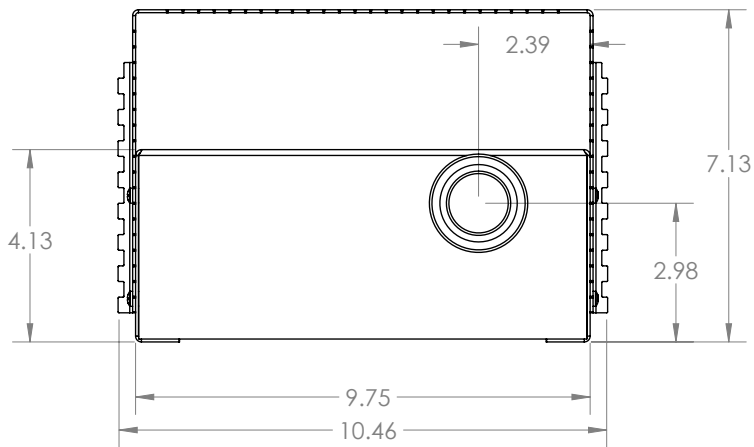
A brand line of
Assembled Products Corporation

115 E Linden • Rogers, Arkansas 72756 USA | Office: (479) 636-5776 • Fax: (479) 636-3245

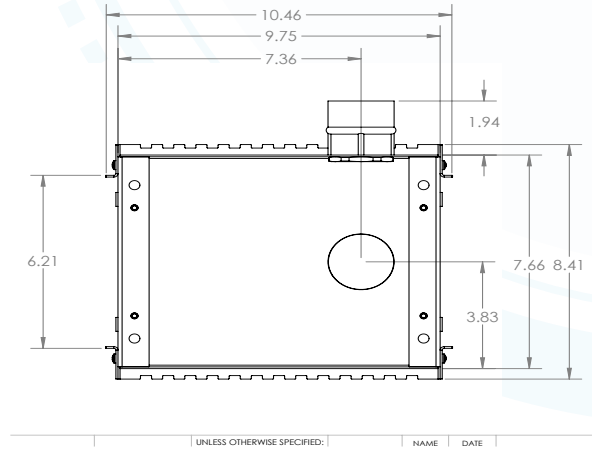


300-1243 - CONSTRUCTION SLEEVE

TOP VIEW

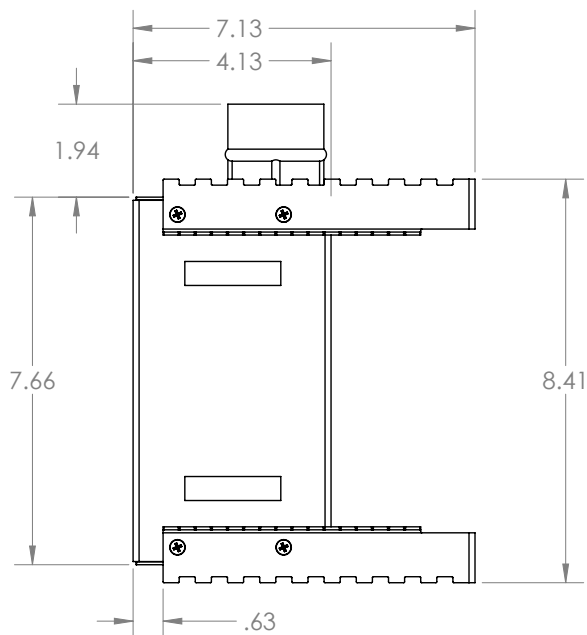


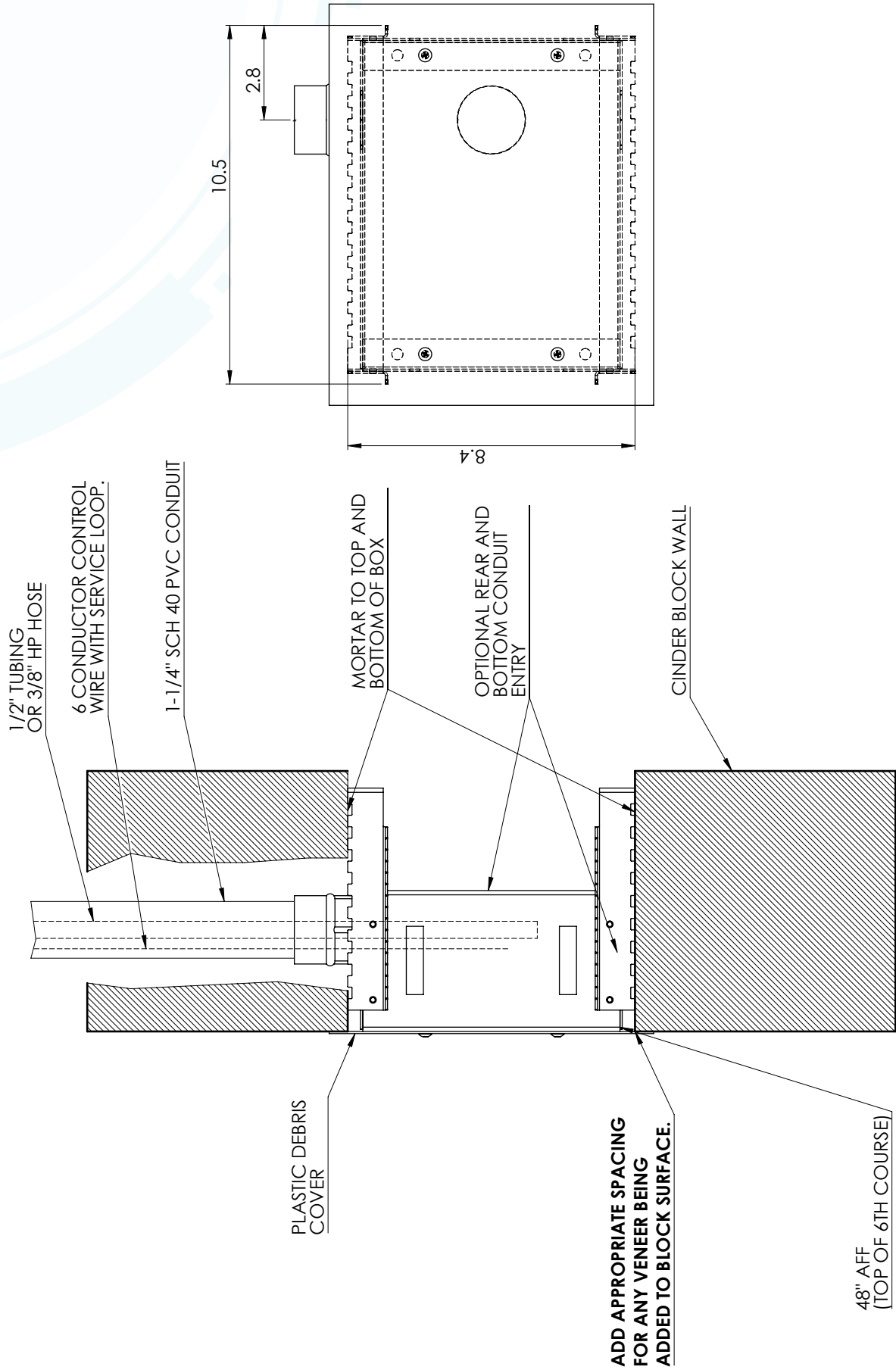
FRONT VIEW



UNLESS OTHERWISE SPECIFIED: NAME DATE

SIDE VIEW







www.spraymastertech.com

300-1260

STAINLESS STEEL RECESSED REMOTE

FEATURES:

- » Stainless Steel Recessed Mounted Remote Station
- » Available w/ Touchpad, Rotary Knob, and Keyswitch Controls
- » Accomodates both SS Tubing or HP Hose
- » Access from Top, Bottom, or Rear of Remote Station
- » 24v Control Panel



300-5131
Non-Masonry / Recessed Remote



Keyswitch
Control Option



Rotary Knob
Option

(800) 548-3373

www.spraymastertech.com

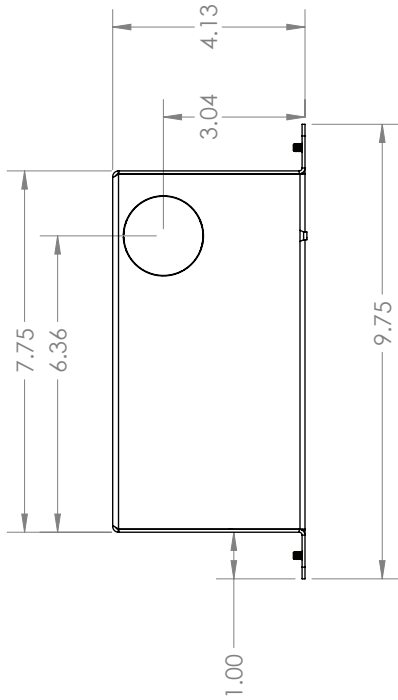
A brand line of
Assembled Products Corporation

115 E Linden • Rogers, Arkansas 72756 USA | Office: (479) 636-5776 • Fax: (479) 636-3245

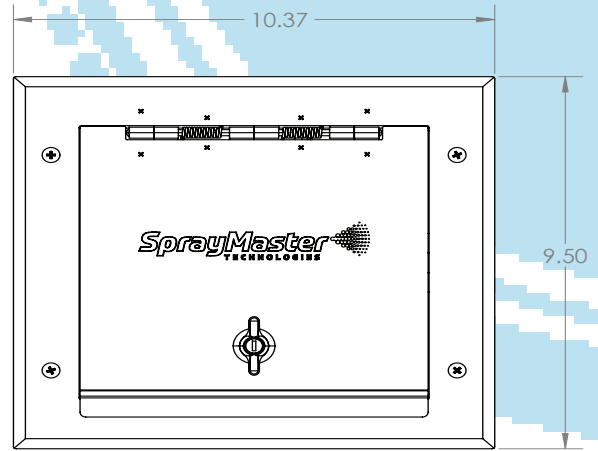


300-1260 - STAINLESS STEEL RECESSED REMOTE

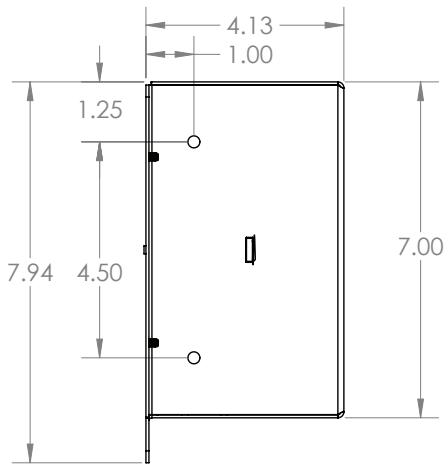
TOP VIEW



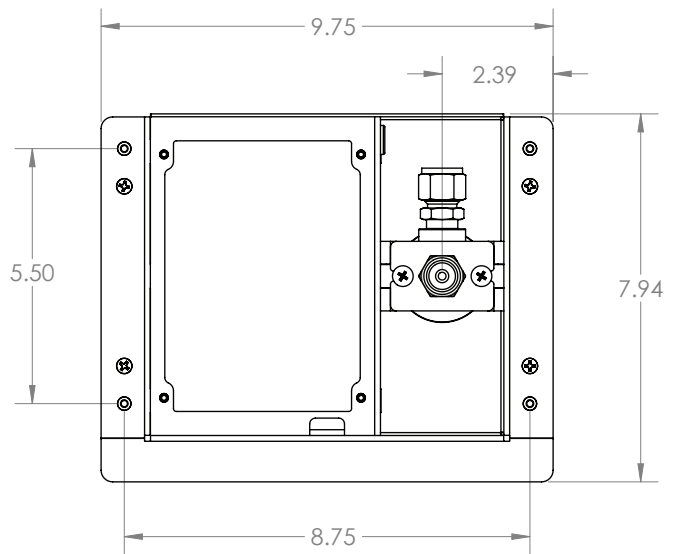
FRONT W/ DOOR



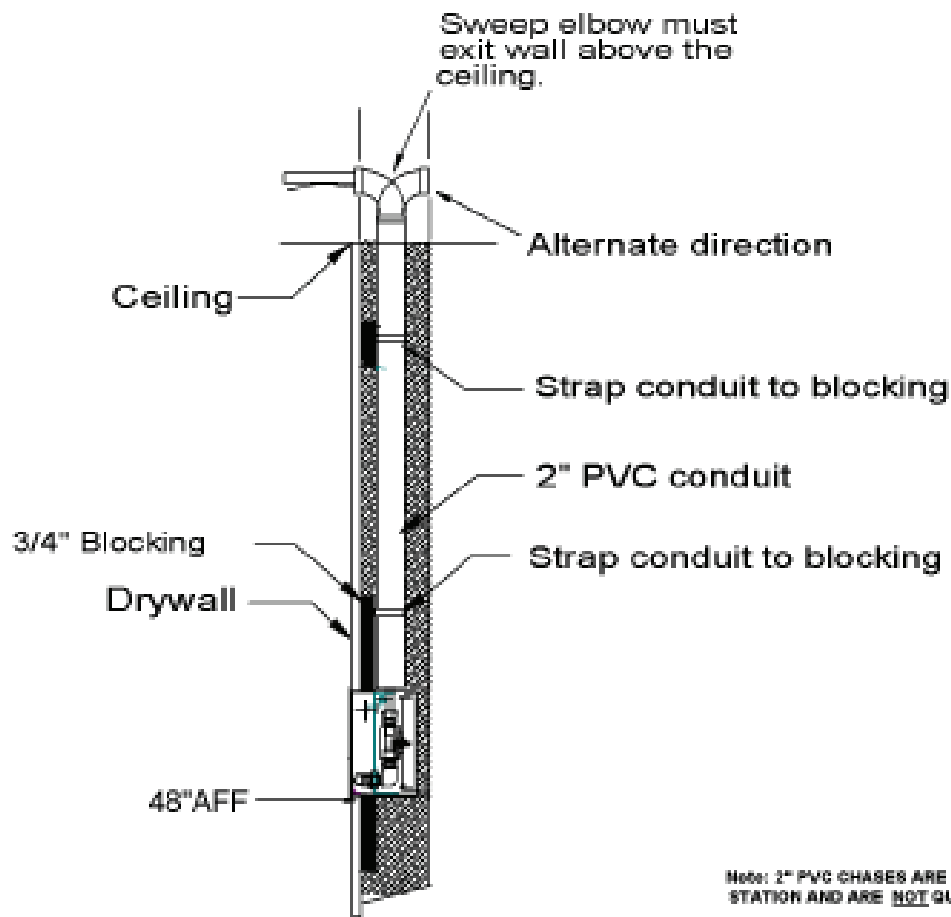
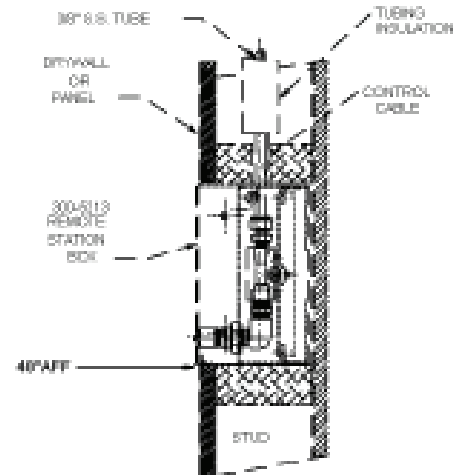
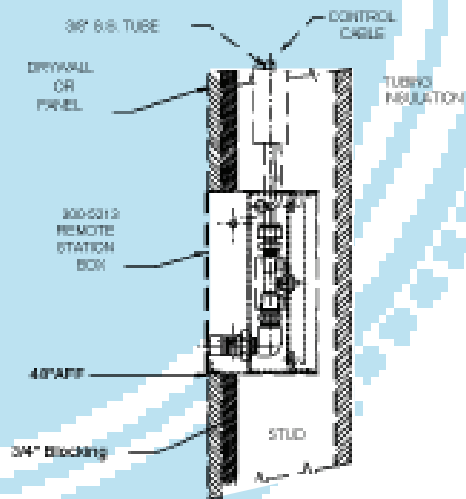
SIDE VIEW



FRONT VIEW



300-1260 - STAINLESS STEEL RECESSED REMOTE



NOTE: 2" PVC CHASES ARE REQUIRED FOR EACH REMOTE STATION AND ARE NOT QUOTED OR SUPPLIED BY SMT

Single Layer
Side View



www.spraymastertech.com

300-5131

POWER CLEAN 2.0C

FEATURES:

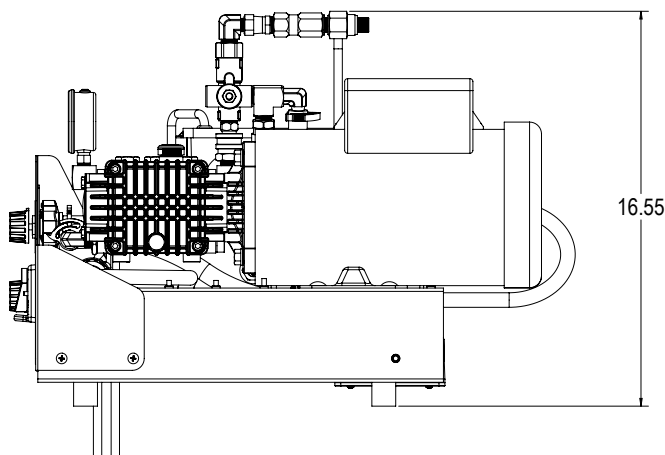
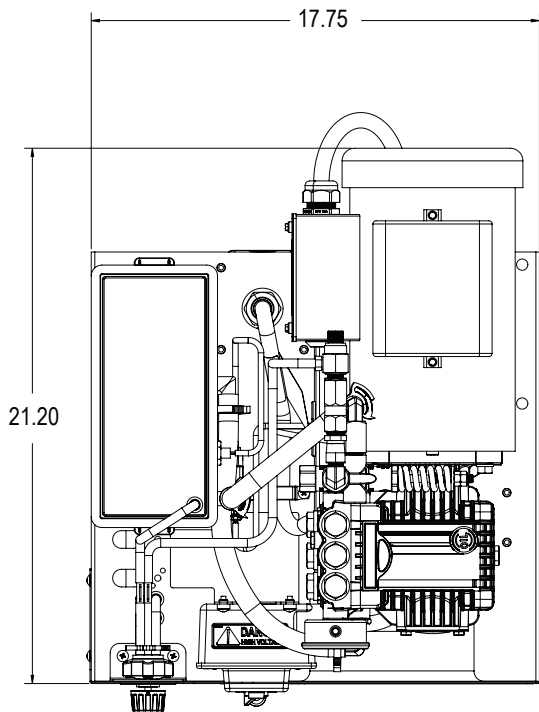
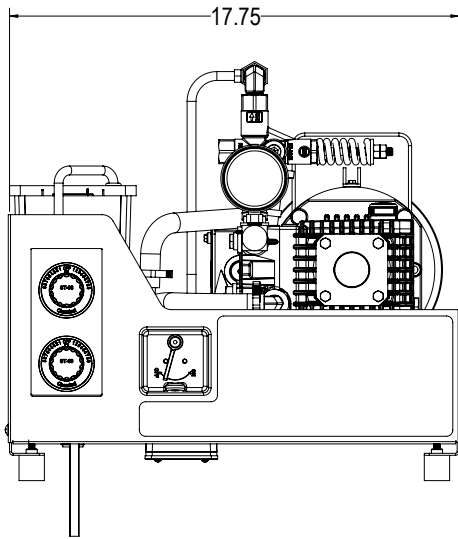
- » 2HP Industrial Motor, Totally-Enclosed, Fan-Cooled
- » 2.1 GPM, 3 Cylinder, Stainless Steel Lined, Ceramic Plunger Pump
- » Master Control Panel w/ LED Readout for Current Status & Troubleshooting
- » SSR w/ Integrated LED for Basic System Status
- » Dual Chemical Injection System w/ Stainless Steel Injectors and Post Pump Injection
- » Anti-Backflow/Anti-Siphon Protection w/ 1" Air Gap via Water Level Float Tank
- » Low Water Shut-Off protection
- » Thermal Limit Switch for Over Temp Protection (150° Max Water Temp)
- » Bleeder Valve Assembly
- » Includes Water Filter Assembly, Replacement Filter Cartridge, and Oil
- » Unit Comes Ready to Wire. **Does Not include Power Cord.**
- » Shipping Weight: 266 lbs



300-5131
Power Clean 2.0c,
2.1 gpm @ 1100 PSI

Power Rating:
120vAC/20A
Dedicated Circuit
for each unit

**Shown with optional
Stainless Steel Cover
and Wall Mounting
Brackets*



EQUIPMENT SPECS:

CLEARANCES

- » Left Side 10"
- » Right Side 10"
- » Overhead 21"
- » Above Finished Floor 36"
- » Front 16"

PLUMBING

3/4" / 2cm Hose Bib with 5 gpm / .14Lpm @ Min. 30 to 80 psi / 20.6 to 5.5 bars. If Warm Water is required, 150° F / 65.5° C Max.

ELECTRICAL

- » One (1) 120v 60Hz, Single Phase 20A, GFCI Protected 'Dedicated Circuit'
- » One (1) 120v 60Hz, Single Phase 15A GFCI Protected, Nema 5-15R Outlet

CHEMICAL DILUTION

Dual Chemical Metering Valves accurately adjust chemical metering to your chemical specifications.

INSTALLATION SPECS:

ELECTRICAL

- » One (1) 120v 60Hz, Single Phase 20A, GFCI Protected 'Dedicated Circuit'
- » One (1) 120v 60Hz, Single Phase 15A GFCI Protected, Nema 5-15R Outlet

WATER

One (1) water outlet with standard 3/4" / 1.9cm hose bib with shut-off valve. A pressure gauge in the water line can be helpful although it is not mandatory. A minimum of 5 gal / 19L per minute and a line pressure not less than 30 psi / 20.6 bars, and not more than 80psi / 5.5 bars, is required.

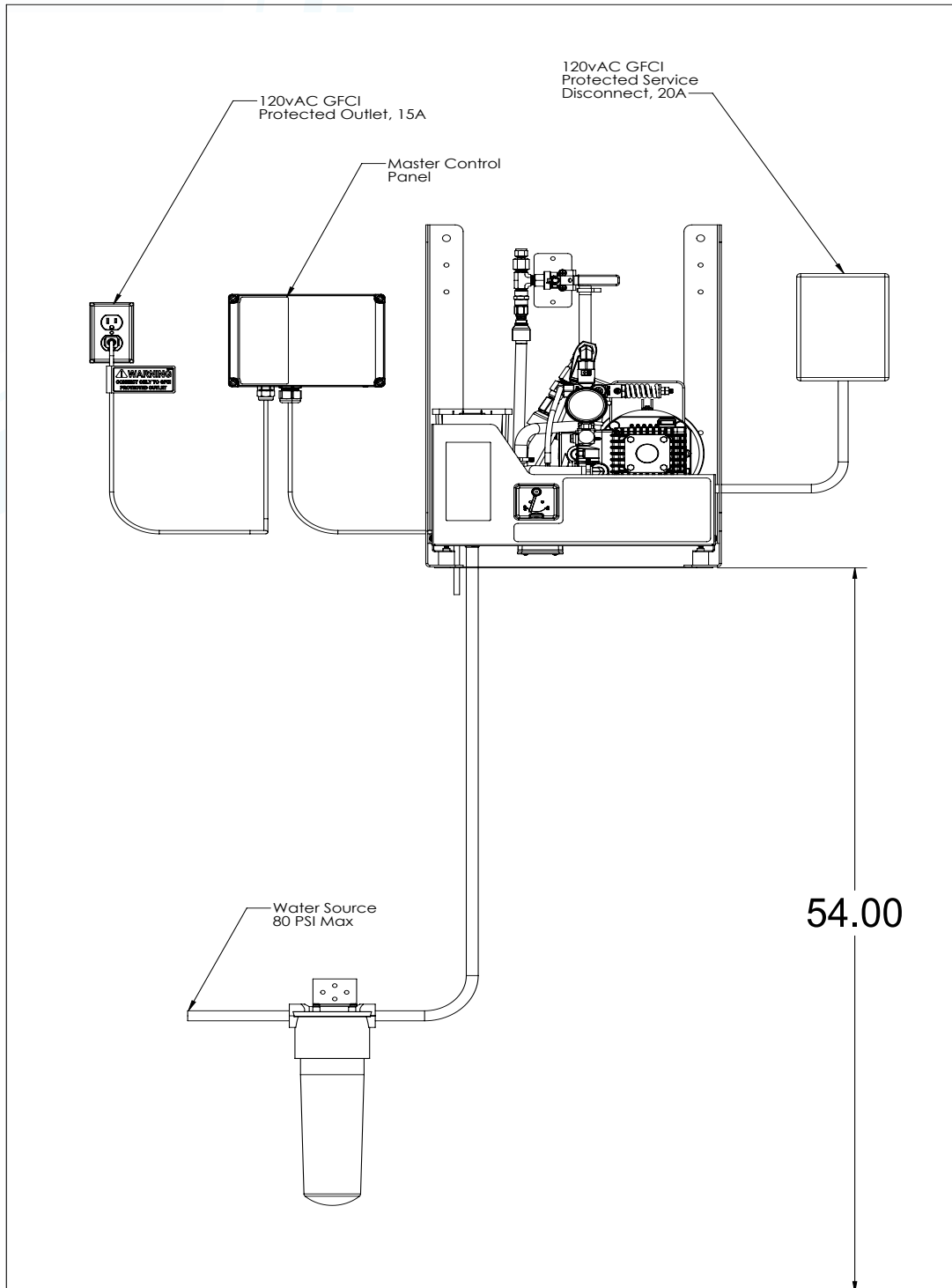
(Option: if warm water outlet is needed - 150° F / 65.5° C MAX)

LOCATION

Heated utility room or closet with ventilation. Minimum 24" / 60.96cm clearance above unit is required. The unit can be serviced without removing it from the wall.

GENERAL RECOMMENDATIONS

Floor drains are essential in new facilities to receive the greatest utilization and maximum efficiency of your **Spray Master** pressure washer. Materials and wall coverings which can be cleaned with pressurized water are desirable. Locate electrical outlets above washing areas.



SYSTEM REQUIREMENTS:

- » One (1) 120v 60Hz, Single Phase 20A, GFCI Protected 'Dedicated Circuit'
- » One (1) 120v 60Hz, Single Phase 15A GFCI Protected, Nema 5-15R Outlet
- » 3/4" Backing required in studded walls.

NOTE: Electrical, Water, and Backing are not supplied by Spray Master.

AMBIENT WATER SUPPLY

Recommended Temp: Cold water, 5 gpm @ minimum (30-60 psi) with a maximum of 80 PSI with 3/4" Hose Bib (*one for each unit*)

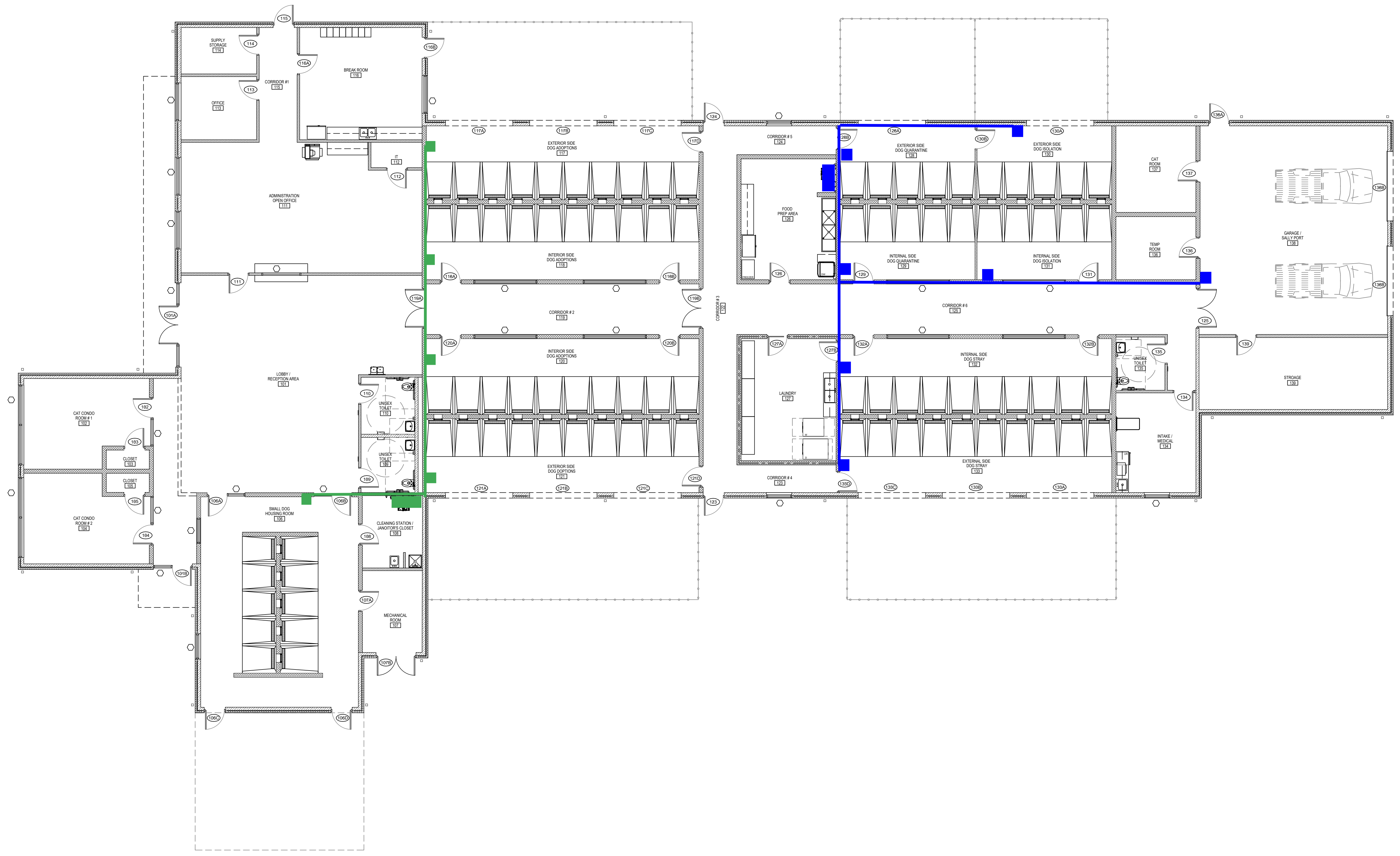
Maximum Temp: 150° F / 65.5 C, 5 gpm @ minimum (30-60 psi) with a maximum of 80 psi with a 3/4" Hose Bib (*one for each unit*)



www.spraymastertech.com

○ CONSTRUCTION PLAN KEYNOTES

- CASEWORK BY G.C. SEE A400 DRAWING SHEETS FOR MILLWORK DETAILS AND ELEVATIONS
- FURNITURE BY OWNER THROUGHOUT; COORDINATE WITH FINISH SCHEDULE AND FINISH PLAN
- COPY MACHINE, BY OWNER
- TRANSACTION WINDOW WITH; SEE WINDOW SCHEDULE FOR MORE INFORMATION
- ROLL UP DOORS, SEE DOOR SCHEDULE FOR MORE INFORMATION
- BOLLARD, SEE DETAIL XIA-XXX
- DOG RELIEF AREA FENCINGS, SEE DETAILS XIA-XXX
- SANITATION STATION 7777
- 2 COMPARTMENT SINK @ FOOD PREP AREA; SEE PLUMBING FOR MORE INFORMATION
- DROP IN SINK AT MILLWORK; SEE PLUMBING DRAWINGS FOR MORE INFORMATION
- WALL MOUNTED LAVATORIES; SEE PLUMBING DRAWINGS FOR MORE INFORMATION
- H/O DRINKING FOUNTAIN WITH INTEGRATED BOTTLE FILLING STATION; SEE PLUMBING DRAWINGS FOR MORE INFORMATION; SEE SHEET G-106 FOR DRINKING FOUNTAIN ADA REQUIREMENTS
- APPLIANCES BY OWNER INSTALLED BY G.C
- EQUIPMENT; SEE MIDMARK EQUIPMENT PACKAGE FOR MORE INFORMATION; PROVIDE BLOCKING @ ALL MILLWORK & EQUIPMENT AS REQUIRED; SEE SHEETS A-302 & A-303 FOR REFERENCE; COORDINATE TIMING OF RELOCATION WITH OWNER
- JANITORS SINK; SEE PLUMBING DRAWINGS FOR MORE INFORMATION
- GROOMING TUB; SEE EQUIPMENT SCHEDULE AND PLUMBING DRAWINGS FOR MORE INFORMATION
- MIDMARK CAGE BANKS WITH BUILT IN SOFFIT ABOVE CABINETS; SEE DETAILS A-400 SERIES SHEETS FOR MORE INFORMATION; SEE EQUIPMENT SCHEDULE FOR MORE INFORMATION FOR CAGES
- LINE OF FINISHED BULKHEAD & SOFFIT ABOVE; SEE RCP FOR MORE INFORMATION
- STAFF LOCKERS, BY OWNER
- 20 GULLOTINE KENNEL DOORS
- DOG RUN SLOPED TO INDIVIDUAL FLOOR TRENCH DRAIN; SEE DETAIL 10A-501.1; SEE EQUIPMENT SCHEDULE FOR MORE INFORMATION
- O2 TANKS; SEE PLUMBING FOR MORE INFORMATION
- APPROXIMATE LOCATION OF ELECTRICAL SERVICE TO BUILDING; SEE CIVIL DRAWINGS FOR MORE INFORMATION
- ELECTRICAL PANELS; SEE ELECTRICAL DRAWINGS FOR MORE INFORMATION
- PROVIDE DIRECT LINE WITH TEMPERATURE REGULATOR VALVE FROM HHW TO ALL HAND WASHING SINKS
- DOWNSPOUTS; SEE ROOF PLAN FOR MORE INFORMATION



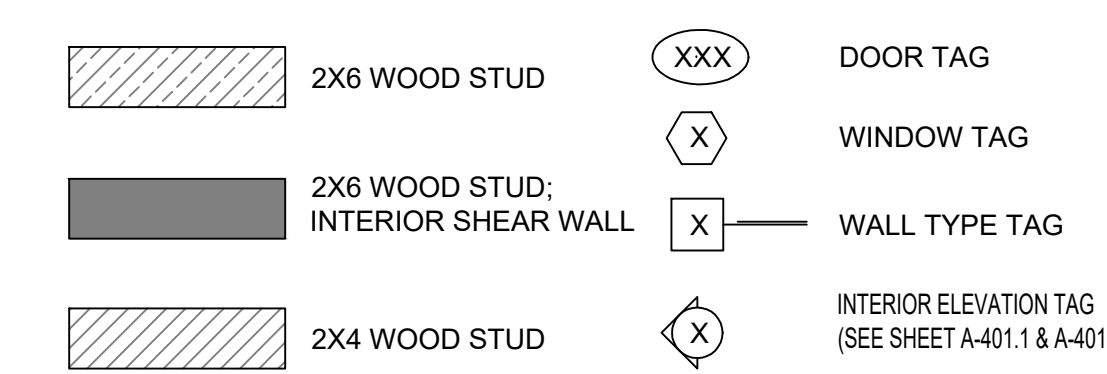
CONSTRUCTION GENERAL NOTES

- CONFLICTS BETWEEN SITE CONDITIONS AND DRAWINGS SHALL BE BROUGHT TO THE IMMEDIATE ATTENTION OF THE ARCHITECT.
- ALL WORK SHALL BE ERECTED AND INSTALLED PLUMB, LEVEL, SQUARE AND TRUE AND IN PROPER ALIGNMENT, U.N.O.
- ALL FURNITURE BY OWNER
- SEE FINISH SCHEDULE FOR CORNER GUARD SPEC. 6'-2" LONG (TYPICAL THROUGHOUT TREATMENT AND SHAK OF HOUSE SPACE, TYPICAL
- ALL DIMENSIONS ARE TO FACE OF STUDS, U.N.O. DIMENSIONS NOTED "HOLD" MUST BE ACCURATELY MAINTAINED AND SHALL NOT VARY MORE THAN ± 1/8" WITHOUT WRITTEN INSTRUCTION FROM ARCHITECT. "ALIGN" MEANS TO ACCURATELY LOCATE FINISHED FACES IN THE SAME PLANE. DIMENSIONS NOTED "CLEAR" ARE MINIMUM DIMENSIONS WHICH MUST BE MAINTAINED WITHOUT EXCEPTION. DIMENSIONS MARKED ± MEAN A VARIANCE NOT GREATER THAN 1/8". VERIFY DIMENSIONS EXCEEDING TOLERANCE WITH THE ARCHITECT. ALL DIMENSIONS TO THE EXTERIOR WINDOW WALL ARE TO THE FACE OF STUDS, U.N.O.
- GLASS TYPES AS NOTED ON GLASS SCHEDULE A601
- PROVIDE BLOCKING IN STUD WALL FRAMING FOR SUPPORT OF CASEWORK, SHELF-STANDARDS, AV DEVICES, FURNITURE, ETC. ALL CONCEALED LUMBER AND BLOCKING TO BE FIRE TREATED. COORDINATE BLOCKING REQUIREMENTS WITH FURNITURE & AV INSTALLERS. WHERE BLOCKING OR ADDITIONAL STUDS ARE REQUIRED AT EXISTING PARTITIONS, THEY ARE TO BE PATCHED AND REPAIRED. SEE CONSTRUCTION PLANS FOR WALL-MOUNTED MONITORS & SCREENS; PROVIDE BLOCKING PER MANUFACTURER'S INSTRUCTIONS
- ALL HINGED DOORS TO BE 4" FROM NEAREST PERPENDICULAR PARTITION, U.N.O. DIMENSIONS LOCATING DOORS ARE TO THE INSIDE EDGE OF JAMB. ALL DOORS SHALL HAVE 1/4" CLEAR ON THE STRIKE/PULL SIDE OF DOOR AND 1/4" CLEAR ON THE STRIKER/SIDE (IF THEY HAVE BOTH A LATCH AND A CLOSER) VERIFY AND ADVISE ARCHITECT OF EXCEPTIONS PRIOR TO CLOSING OUT PARTITIONS.
- THE CONTRACTOR SHALL ESTABLISH A SINGLE FLOOR ELEVATION THAT IS TO BE USED TO SET THE TOP OF ALL DOORS SUCH THAT THE TOP OF ALL DOORS OF THE SAME HEIGHT WILL ALIGN REGARDLESS OF VARIATIONS IN THE FLOOR SLAB OR FINISHED FLOOR THICKNESS.
- PROVIDE VERTICAL CONTROL JOINTS BY O.C. MAX. IN ALL GWB PARTITIONS LONGER THAN 30'. WHEN POSSIBLE CONTROL JOINTS SHOULD BE LOCATED ABOVE THE CORNER OF A DOOR.
- ALL SIEKHALKS TO DRAIN AWAY FROM EXTERIOR DOORS.
- EXTERIOR GRADES TO BE MINIMUM 6" BELOW FINISHED FLOOR.

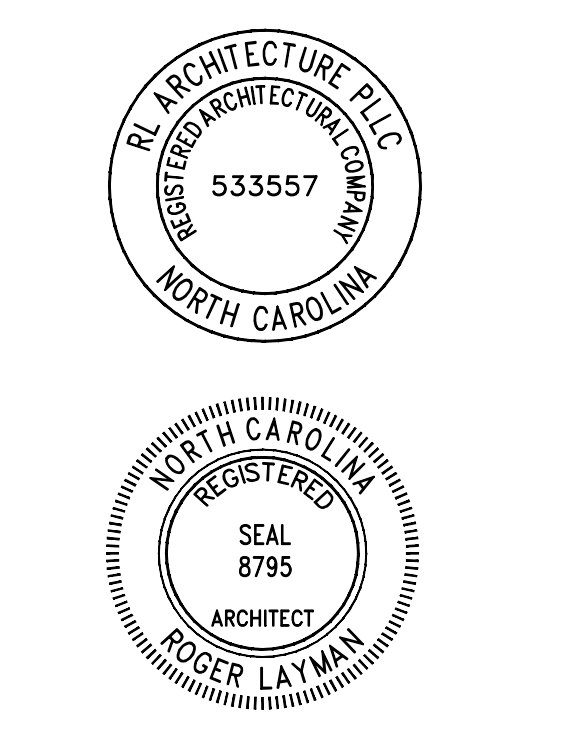
PARTITION GENERAL NOTES

- SEE SHEET A-301 FOR WALL TYPE DETAILS
- PARTITION DEPTH AT FIRE EXTINGUISHER CABINET LOCATIONS SHALL ACCOMMODATE FULL CONCEALMENT OF RECESSED CABINETS OR PARTIAL CONCEALMENT OF SEMI-RECESSED CABINETS AS SPECIFIED BY THE MANUFACTURER.
- ALL PARTITIONS ABUTTING COLUMNS ARE TO ALIGN WITH THE FACE OF THE COLUMN, U.N.O.
- ALL GYPSUM BOARD PARTITIONS SHALL BE TAPED AND SANDED SMOOTH WITH NO VISIBLE JOINTS. PROVIDE LEVEL 4 FINISH UNO - REFER TO ELEVATIONS AND THE MATERIAL SCHEDULE FOR MATERIALS THAT REQUIRE A LEVEL 5 FINISH.
- ALL EXPOSED GYPSUM BOARD EDGES TO HAVE W/VI OR METAL EDGE TRIM. REFER TO THE PARTITION TYPES FOR PARTITION THICKNESS.
- ARCHITECT SHALL REVIEW ON SITE THE PARTITION LAYOUT PRIOR TO PARTITION INSTALLATION.
- CONSTRUCTION OF FIRE-RATED PARTITIONS, INCLUDING TAPING AND FINISHING OF GYPSUM WALLBOARD FOR FULL HEIGHT TO STRUCTURE ABOVE, SHALL BE IN ACCORDANCE WITH U.I. SPECIFICATIONS TO ACHIEVE RATING INDICATED.
- ACOUSTICAL (SOUND-ISOLATION) PARTITIONS SHALL BE SEALED FOR FULL HEIGHT TO PREVENT PASSAGE OF AIRBORNE SOUND. TAPE AND FINISH ALL GYPSUM WALLBOARD JOINTS AND FASTENERS (INCLUDING ABOVE SUSPENDED CEILING). CAULK AT PERIMETER AND SEAL AT ALL PENETRATIONS.
- PROVIDE DOUBLE STUDS AT DOOR JAMBS. INSTALL ADDITIONAL STUDS IN EXISTING PARTITIONS AT NEW DOOR OPENINGS IN ORDER TO PROVIDE DOUBLE STUDS AT JAMBS.
- PROVIDE DIAGONAL STUD BRACINGS TO SLAB ABOVE @ 48" O.C. AT DROP ARCHES/BULKHEADS.
- MR TYPE GYPSUM WALLBOARD AT BOTH SIDES OF ALL PARTITIONS WITH PLUMBING ROUGHING (E.G. BATHROOMS, PANTRY, JANITOR, ETC.)

CONSTRUCTION PLAN LEGEND:



VETERINARY ARCHITECTURE
Unleashed
 A DIVISION OF RL ARCHITECTURE, PLLC
 RL ARCHITECTURE, PLLC
 PO Box 161
 Davidson, NC 28036
 ph. 704.756.3540
 RLArchitecture.com



DRAWING TITLE:
FLOOR PLAN

THIS DRAWING IS THE PROPERTY OF RLArchitecture, PLLC AND IS NOT TO BE COPIED OR REPRODUCED IN PART OR WHOLE WITHOUT THE EXPRESSED WRITTEN PERMISSION OF RLArchitecture, PLLC.

DD REVIEW SET

REVISIONS	
NO.	DESCRIPTION

DATE: 4.23.2024
 PROJECT #: 2022.74
 SCALE: AS NOTED
 DRAWN BY: RL

