

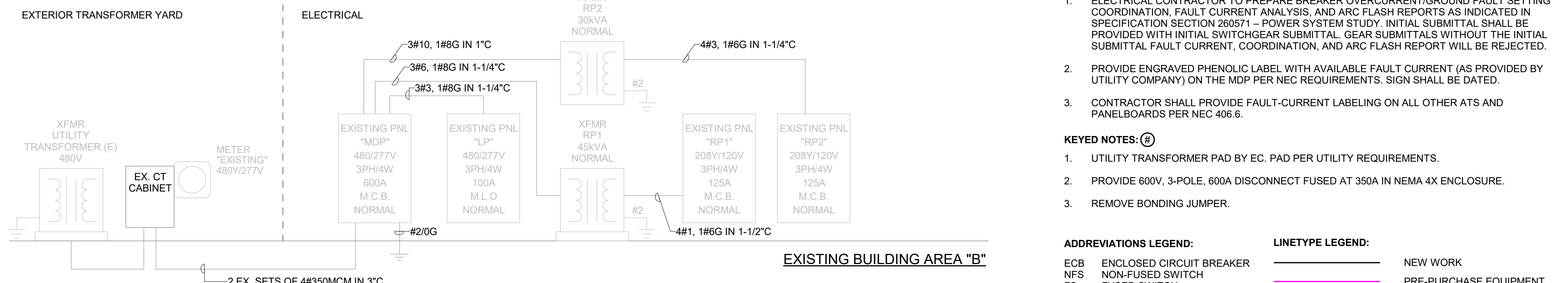
3 NEW SWITCHBOARD ELEVATION
Scale: N.T.S.

FEEDER TAG	AMPACITY (A1)	COPPER FEEDER SIZE#2,3	ALUMINUM FEEDER SIZE#2,3
THREE PHASE, NEUTRAL, & EQUIPMENT GROUND			
60Y	60	3#6, 1#6GN, 1#10G IN 1" C	NOT ALLOWED
90Y	85	3#4, 1#4N, 1#6G IN 1-1/4" C	NOT ALLOWED
100Y	100	3#3, 1#3N, 1#6G IN 1-1/4" C	3#1, 1#1N, 1#6G IN 1-1/2" C
110Y	115	3#2, 1#2N, 1#6G IN 1-1/4" C	3#1/0, 1#1/0N, 1#4G IN 1-1/2" C
125Y	130	3#1, 1#1N, 1#6G IN 1-1/2" C	3#2/0, 1#2/0N, 1#4G IN 2" C
150Y	150	3#1/0, 1#1/0N, 1#6G IN 1-1/2" C	3#3/0, 1#3/0N, 1#4G IN 2" C
175Y	175	3#2/0, 1#2/0N, 1#6G IN 2" C	3#4/0, 1#4/0N, 1#4G IN 2-1/2" C
200Y	200	3#3/0, 1#3/0N, 1#6G IN 2" C	3-250kcmil, 1-250kcmil N, 1#4G IN 2-1/2" C
225Y	230	3#4/0, 1#4/0N, 1#4G IN 2-1/2" C	3-300kcmil, 1-300kcmil N, 1#2G IN 2-1/2" C
250Y	255	3-250kcmil, 1-250kcmil N, 1#4G IN 2-1/2" C	3-400kcmil, 1-400kcmil N, 1#2G IN 3" C
300Y	300	3-350kcmil, 1-350kcmil N, 1#4G IN 2-1/2" C	3-500kcmil, 1-500kcmil N, 1#2G IN 3" C
350Y	380	3-500kcmil, 1-500kcmil N, 1#3G IN 4" C	2 SETS OF 3-250kcmil, 1-250kcmil N, 1#1G IN 2-1/2" C EACH SET
400Y	400	2 SETS OF 3#3/0, 1#3/0N, 1#3G IN 2" C EACH SET	2 SETS OF 3-250kcmil, 1-250kcmil N, 1#1G IN 2-1/2" C EACH SET
600Y	600	2 SETS OF 3-350kcmil, 1-350kcmil N, 1#1G IN 2-1/2" C EACH SET	2 SETS OF 3-500kcmil, 1-500kcmil N, 1#2/0G IN 3" C EACH SET
800Y	800	3 SETS OF 3-300kcmil, 1-300kcmil N, 1#1/0G IN 2-1/2" C EACH SET	3 SETS OF 3-400kcmil, 1-400kcmil N, 1#3/0G IN 3" C EACH SET
1000Y	1000	3 SETS OF 3-400kcmil, 1-400kcmil N, 1#2/0G IN 4" C EACH SET	4 SETS OF 3-350kcmil, 1-350kcmil N, 1#4/0G IN 3" C EACH SET
1200Y	1200	4 SETS OF 3-350kcmil, 1-350kcmil N, 1#3/0G IN 4" C EACH SET	4 SETS OF 3-500kcmil, 1-500kcmil N, 1#250kcmilG IN 3" C EACH SET
THREE PHASE, NEUTRAL, & GROUNDING ELECTRODE			
100YT	100	3#3, 1#3N, 1#6G IN 1-1/4" C	3#1, 1#1N, 1#6G IN 1-1/2" C
150YT	150	3#1/0, 1#1/0N, 1#6G IN 1-1/2" C	3#3/0, 1#3/0N, 1#4G IN 2" C
225YT	230	3#4/0, 1#4/0N, 1#2G IN 2-1/2" C	3-300kcmil, 1-300kcmil N, 1#1/0G IN 2-1/2" C
350YT	380	3-500kcmil, 1-500kcmil N, 1#1/0G IN 4" C	2 SETS OF 3-250kcmil, 1-250kcmil N, 1#1/0G IN 2-1/2" C EACH SET
400YT	400	2 SETS OF 3#3/0, 1#3/0N, 1#4G IN 2" C EACH SET	2 SETS OF 3-250kcmil, 1-250kcmil N, 1#1/0G IN 2-1/2" C EACH SET
500YT	500	2 SETS OF 3-250kcmil, 1-250kcmil N, 1#2G IN 2-1/2" C EACH SET	2 SETS OF 3-350kcmil, 1-350kcmil N, 1#1/0G IN 3" C EACH SET
600YT	600	2 SETS OF 3-350kcmil, 1-350kcmil N, 1#2G IN 2-1/2" C EACH SET	2 SETS OF 3-500kcmil, 1-500kcmil N, 1#1/0G IN 3" C EACH SET
800YT	800	3 SETS OF 3-300kcmil, 1-300kcmil N, 1#2G IN 2-1/2" C EACH SET	3 SETS OF 3-400kcmil, 1-400kcmil N, 1#1/0G IN 3" C EACH SET
THREE PHASE & EQUIPMENT GROUND (NO NEUTRAL)			
50A	50	3#6, 1#10G IN 3/4" C	NOT ALLOWED
60A	60	3#6, 1#10G IN 3/4" C	NOT ALLOWED
70A	65	3#6, 1#6G IN 3/4" C	NOT ALLOWED
80A	85	3#4, 1#6G IN 1" C	NOT ALLOWED
90A	85	3#4, 1#6G IN 1" C	NOT ALLOWED
100A	100	3#3, 1#6G IN 1" C	3#1, 1#6G IN 1-1/2" C
110A	115	3#2, 1#6G IN 1-1/4" C	3#1/0, 1#4G IN 1-1/2" C
125A	130	3#1, 1#6G IN 1-1/4" C	3#2/0, 1#4G IN 1-1/2" C
150A	150	3#1/0, 1#6G IN 1-1/2" C	3#3/0, 1#4G IN 1-1/2" C
175A	175	3#2/0, 1#6G IN 1-1/2" C	3#4/0, 1#4G IN 2" C
200A	200	3#3/0, 1#6G IN 2" C	3-250kcmil, 1#4G IN 2" C
225A	230	3#4/0, 1#4G IN 2" C	3-300kcmil, 1#2G IN 2" C
250A	255	3-250kcmil, 1#4G IN 2" C	3-400kcmil, 1#2G IN 2-1/2" C
350A	380	3-500kcmil, 1#3G IN 2-1/2" C	2 SETS OF 3-250kcmil, 1#1G IN 2" C EACH SET
THREE PHASE & GROUNDED NEUTRAL (SERVICE)			
1200SE	1200	4 SETS OF 3-350kcmil, 1-350kcmil GN IN 4" C EACH SET	4 SETS OF 3-500kcmil, 1-500kcmil GN, IN 3" C EACH SET
1200SE ALT	1200	3 SETS OF 3-600kcmil, 1-600kcmil GN IN 4" C EACH SET	4 SETS OF 3-500kcmil, 1-500kcmil GN, IN 3" C EACH SET
1600SE	1600	5 SETS OF 3-400kcmil, 1-400kcmil GN IN 4" C EACH SET	6 SETS OF 3-400kcmil, 1-400kcmil GN, IN 3" C EACH SET
1600SE ALT	1600	4 SETS OF 3-600kcmil, 1-600kcmil GN IN 4" C EACH SET	5 SETS OF 3-600kcmil, 1-600kcmil GN IN 4" C EACH SET
2000SE	2000	6 SETS OF 3-400kcmil, 1-400kcmil GN IN 4" C EACH SET	7 SETS OF 3-500kcmil, 1-500kcmil GN, IN 3" C EACH SET
2000SE ALT	2000	5 SETS OF 3-600kcmil, 1-600kcmil GN IN 4" C EACH SET	5 SETS OF 3-750kcmil, 1-750kcmil GN IN 4" C EACH SET

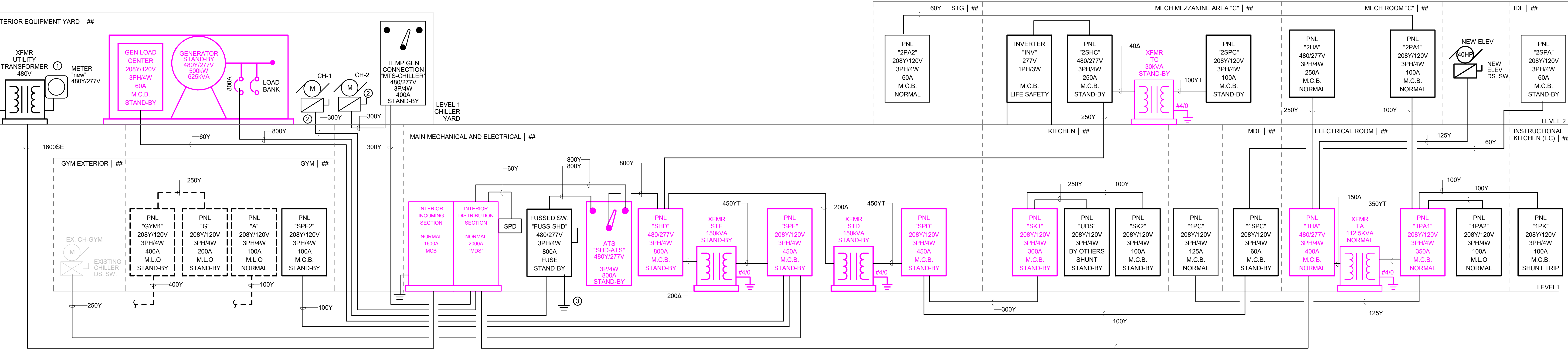
1 AMPACITY LISTED IS BASED ON NEC TABLE 310.15(B)(16) AND THE 75°C RATING COLUMN UNLESS LIMITED BY EQUIPMENT GROUNDING CONDUCTOR PER NEC TABLE 250.122. IF TERMINALS OR SPLICES RATED LESS THAN 75°C ARE ENCOUNTERED CONTRACTOR SHALL RESIZE PHASE CONDUCTOR AND EQUIPMENT GROUND ACCORDINGLY.

2 IF PHASE CONDUCTORS ARE INCREASED ABOVE SIZE LISTED FOR ANY REASON, THE EQUIPMENT GROUNDING CONDUCTOR SHALL BE INCREASED PROPORTIONALLY BASED ON CIRCULAR MIL AREA PER NEC 250.122(B).

3 CONDUIT SIZE IS BASED ON THHN/THWN CONDUCTORS IN EMT. CONTRACTOR SHALL ADJUST CONDUIT SIZE PER NEC CHAPTER 9, TABLES.



2 ELECTRICAL RISER DIAGRAM EXISTING CLASSROOM BUILDING "B"
Scale: 1/2" = 1'-0"



1 ELECTRICAL RISER DIAGRAM 1
Scale: N.T.S.