

Wayne Community College

Azalea Renovation Bidding RFI's

1. The finish schedule specifies Ultima, while the specifications list Fine Fissured High NRC or equivalent products by CertainTeed or USG. Which product should be used?
 - a. **Follow the project manual specifications in Division 9 (095100 Acoustical Ceilings), which specify Fine Fissured High NRC or approved equivalents for all spaces (ACP-1) except Criminal Justice Lab 127 refer to revised spec 095100 for ACP-2 for washable ceiling for this space.**
2. The Milliken LVT specified is 5 millimeters thick, while the Mannington LVT specified is 2.5 millimeters. This discrepancy does not align with the floor finish plan as shown. Should we consider using a different color of the Mannington LVT to maintain consistency or switch to a single manufacturer and thickness for all LVT?
 - a. **The LVT selections match what was done in Hocutt at the owners direction. The Miliken LVT-A is to be installed in the classrooms. The Mannington LVT-B is to be installed in the corridor. See revised finish plan and schedule attached. Use reducer strip at flooring height changes.**
3. What is the intended material and mounting style of the toilet partitions?
 - a. **Floor-mounted toilet partitions made of stainless steel with a satin finish and concealed hardware.**
4. What manufacturer is basis of design for toilet accessories?
 - a. **Acceptable manufacturers for toilet accessories include A & J Washroom Accessories, American Specialties, Bobrick Washroom Equipment, or Bradley Corporation.**
5. Corner Guards are on the Finish Plan Legend however not on the plans, are corner guards used on this project? If so, how many, and what type?
 - a. **Corner guards will be clear plastic covers over aluminum retainers and will be installed on all outside corners to protect against impact and wear. Refer to specification 102600**
6. The Life Safety legend shows both bracketed and cabinet fire extinguishers however none are shown on the plans, can you provide locations or quantities?
 - a. **Cabinets are now indicated on the attached LS1.1 and A2.1. (3) cabinets (2) bracketed.**
7. Are there any visual displays other than Televisions? (ex. Markerboards, Tackboards)
 - a. **Yes, projection ready white boards refer to A2.1, keynote 17.**
8. Are there any window treatments required for this project? (ex. Blinds, shades)
 - a. **There are no window treatments required for this project. They are NIC**
9. Can the architect provide hardware sets required for each door? The door schedule and hardware spec does not call out the hardware sets per door.
 - a. **The hardware sets are now listed on the door schedule on sheet a2.1. They are also provided in the attached Door Index PDF.**

Door Numbers	HwSet#
100	11
101	08
105	08
106	06
107	06
108	07
108A	03
109	04
110	05
111	05
112	05
113	05
118	02
119A	09
119B	09
120A	01
120B	08
121	05
122	05
123	08
128	06
128.1	10
129	06

**SECTION 095100
ACOUSTICAL CEILINGS**

PART 1 GENERAL

1.01 REFERENCE STANDARDS

- A. ASCE 7 - Minimum Design Loads and Associated Criteria for Buildings and Other Structures.
- B. ASTM A653/A653M - Standard Specification for Steel Sheet, Zinc-Coated (Galvanized) or Zinc-Iron Alloy-Coated (Galvannealed) by the Hot-Dip Process.
- C. ASTM C635/C635M - Standard Specification for Manufacture, Performance, and Testing of Metal Suspension Systems for Acoustical Tile and Lay-in Panel Ceilings.
- D. ASTM E84 - Standard Test Method for Surface Burning Characteristics of Building Materials.
- E. ASTM E1264 - Standard Classification for Acoustical Ceiling Products.

1.02 SUBMITTALS

- A. Shop Drawings: Indicate grid layout and related dimensioning.
- B. Product Data: Provide data on suspension system components, acoustical units, and specialty ceiling products as indicated.
- C. Maintenance Materials: Furnish the following for Owner's use in maintenance of project.
 - 1. See Section 016000 - Product Requirements, for additional provisions.
 - 2. Extra Acoustical Panels: Quantity equal to 2 percent of total installed, of each type.
- D. Warranty: Submit manufacturer warranty and ensure forms have been completed in Owner's name and registered with manufacturer.

1.03 QUALITY ASSURANCE

- A. Source Limitations: Provide each acoustical ceiling assembly (ceiling panel and suspension system) from a single manufacturer to obtain manufacturer's system warranty.

1.04 DELIVERY, STORAGE, AND HANDLING

- A. Do not deliver until building is weather-tight and conditioned.
- B. Store materials in dry and clean location until needed for installation. During installation, handle in a manner that will prevent damage and to prevent marring and soiling of finished surfaces.

1.05 FIELD CONDITIONS

- A. Maintain uniform temperature and humidity at occupancy conditions during and after acoustical unit installation. Allow products to acclimatize prior to installation.

1.06 WARRANTY

- A. System Warranty: Provide a single source system warranty covering both acoustical ceiling panels and suspension system.
 - 1. Warranty shall cover material failures including sag, warping, shrinkage, or delamination, biologic growth including mold or mildew, and rusting of suspension system.
 - 2. Warranty Period: Minimum 15 years, from date of Owner's Final Acceptance.

PART 2 PRODUCTS

2.01 PERFORMANCE REQUIREMENTS

- A. Surface Burning Characteristics: Each acoustical ceiling shall be Class A rated, with flame spread index of 25 or less, smoke developed index of 50 or less, when tested in accordance with ASTM E84.
- B. Seismic Performance: Ceiling systems designed to withstand the effects of earthquake motions determined according to ASCE 7, which references applicable requirements of ASTM E 580 "Installation of Ceiling Suspension Systems for Acoustical Tile and Lay-In Panels in Areas Subject to Earthquake Ground Motions." for Seismic Design Category indicated on Structural Drawings and complying with local authorities having jurisdiction.

2.02 ACOUSTICAL PANELS

- A. Acoustical Panels - General: ASTM E1264, Class A.
 - 1. Antibacterial/Antimicrobial Treatment: Provide acoustical panels that have been factory-treated by manufacturer for resistance to bacteria, mold, mildew, and fungus.
 - 2. Humidity/Sag Treatment: Provide acoustical panels that have been factory-treated by manufacturer for humidity and sag-resistance.
- B. Acoustical Panels **ACP-1**: Painted mineral fiber, with the following characteristics:
 - 1. Classification: ASTM E1264 Type III.
 - a. Form: 2, water felted.
 - 2. Size: 24 by 24 inches.
 - 3. Thickness: 3/4 inch.
 - 4. Light Reflectance: Not less than 0.82, determined in accordance with ASTM E1264.
 - 5. NRC Range: Not less than 0.70, determined in accordance with ASTM E1264.
 - 6. Panel Edge: Square.
 - 7. Color: White.
 - 8. Suspension System: Exposed grid.
 - 9. Products:
 - a. Armstrong World Industries, Inc; School Zone Fine Fissured - Item #1713.
 - b. CertainTeed Ceilings, Inc; Fine Fissured High NRC - Item #HHF-457 HNRCX.
 - c. USG Corporation; Radar High-NRC Acoustical Panels - Item #22421.
 - d. Substitutions: See Section 016000 - Product Requirements.
- C. **Acoustical Panels, Type ACP-2: Mineral fiber with membrane-faced overlay, with the following characteristics:**
 - 1. **Location: Criminal Justice Lab**
 - 2. **Classification: ASTM E1264 Type IV.**
 - a. **Form: 2, water felted.**
 - b. **Pattern: "E" - lightly textured.**
 - 3. **Size: 24 by 24 inches.**
 - 4. **Thickness: 3/4 inch.**
 - 5. **Light Reflectance: Not less than 0.86, determined in accordance with ASTM E1264.**
 - 6. **NRC Range: Not less than 0.70, determined in accordance with ASTM E1264.**

7. **Ceiling Attenuation Class (CAC): Not less than 35, determined in accordance with ASTM E1264.**
8. **Panel Edge: Square.**
9. **Color: White.**
10. **Products:**
 - a. **Armstrong World Industries, Inc; Ultima Health Zone - Item #1935.**
 - b. **CertainTeed Ceilings, Inc.; Performa Rx Symphony m - Item #1222-RSX-1.**
 - c. **USG Corporation; Mars Healthcare - Item #86169.**
 - d. **Substitutions: See Section 016000 - Product Requirements.**

2.03 SUSPENSION SYSTEM(S)

- A. Metal Suspension Systems - General: Complying with ASTM C635/C635M; die cut and interlocking components, with perimeter moldings, hold down clips, stabilizer bars, clips, and splices as required.
 1. Materials:
 - a. Steel Grid: ASTM A653/A653M, G30 coating, unless otherwise indicated.
 2. Cross Tee/Main Runner Connection: Override (stepped).
 3. Main Runner End Coupling: Bayonet ("stab") type; knuckle type is not acceptable.
- B. Exposed Suspension System, Type ACP: Hot-dipped galvanized steel grid with aluminum cap.
 1. High Humidity Applications: Provide in kitchens, rooms with showers, custodial rooms, mechanical rooms, and other rooms where increased corrosion resistance due to humidity or steam is required.
 2. Structural Classification: Intermediate-duty, when tested in accordance with ASTM C635/C635M.
 3. Coating: Provide minimum G60 hot-dip galvanized coating.
 4. Profile: Tee; 15/16 inch face width.
 5. Finish: Baked enamel.
 6. Color: White.
 7. Products:
 - a. Armstrong World Industries, Inc; Prelude Plus XL Fire Guard.
 - b. CertainTeed Ceilings, Inc; 15/16" EZ Stab Classic Environmental System.
 - c. USG Corporation; Donn Brand ZXLA 15/16 inch Acoustical Suspension System.
 - d. Substitutions: See Section 016000 - Product Requirements.
- C. Exposed Suspension System, Type ACP: Hot-dipped galvanized steel grid and cap.
 1. Structural Classification: Intermediate-duty, when tested in accordance with ASTM C635/C635M.
 2. Profile: Tee; 15/16 inch face width.
 3. Finish: Baked enamel.
 4. Products:
 - a. Armstrong World Industries, Inc; Prelude XL 15/16".
 - b. CertainTeed Ceilings, Inc; 15/16" EZ Stab Classic System.
 - c. USG Corporation; Donn Brand DX/DXL 15/16 inch Acoustical Suspension System.
 - d. Substitutions: See Section 016000 - Product Requirements.

2.04 ACCESSORIES

- A. Support Channels and Hangers: Galvanized steel; size and type to suit application, seismic requirements, and ceiling system flatness requirement specified.
- B. Hanger Wire: 12 gauge, 0.08 inch galvanized steel wire.
- C. Perimeter Moldings: Same metal and finish as grid.

PART 3 EXECUTION

3.01 EXAMINATION

- A. Verify existing conditions before starting work.
- B. Verify that layout of hangers will not interfere with other work.

3.02 PREPARATION

- A. Install after major above-ceiling work is complete.
- B. Coordinate the location of hangers with other work.

3.03 INSTALLATION - SUSPENSION SYSTEM

- A. Rigidly secure system, including integral mechanical and electrical components, for maximum deflection of 1:360.
- B. Lay out system to a balanced grid design with edge units no less than 50 percent of acoustical unit size.
- C. Perimeter Molding: Install at intersection of ceiling and vertical surfaces and at junctions with other interruptions.
 - 1. Use longest practical lengths.
- D. Suspension System, Non-Seismic: Hang suspension system independent of walls, columns, ducts, pipes and conduit. Where carrying members are spliced, avoid visible displacement of face plane of adjacent members.
 - 1. Do not hang suspension system directly from steel floor or roof deck.
- E. Seismic Suspension System, Seismic Design Category C: Hang suspension system independent of walls, columns, ducts, pipes and conduit. Maintain a 3/8 inch clearance between grid ends and wall.
- F. Where ducts or other equipment prevent the regular spacing of hangers, reinforce the nearest affected hangers and related carrying channels to span the extra distance.
- G. Do not support components on main runners or cross runners if weight causes total dead load to exceed deflection capability.
- H. Support fixture loads using supplementary hangers located within 6 inches of each corner, or support components independently.
- I. Do not eccentrically load system or induce rotation of runners.

3.04 INSTALLATION - ACOUSTICAL UNITS

- A. Install acoustical units in accordance with manufacturer's instructions.
- B. Fit acoustical units in place, free from damaged edges or other defects detrimental to appearance and function.

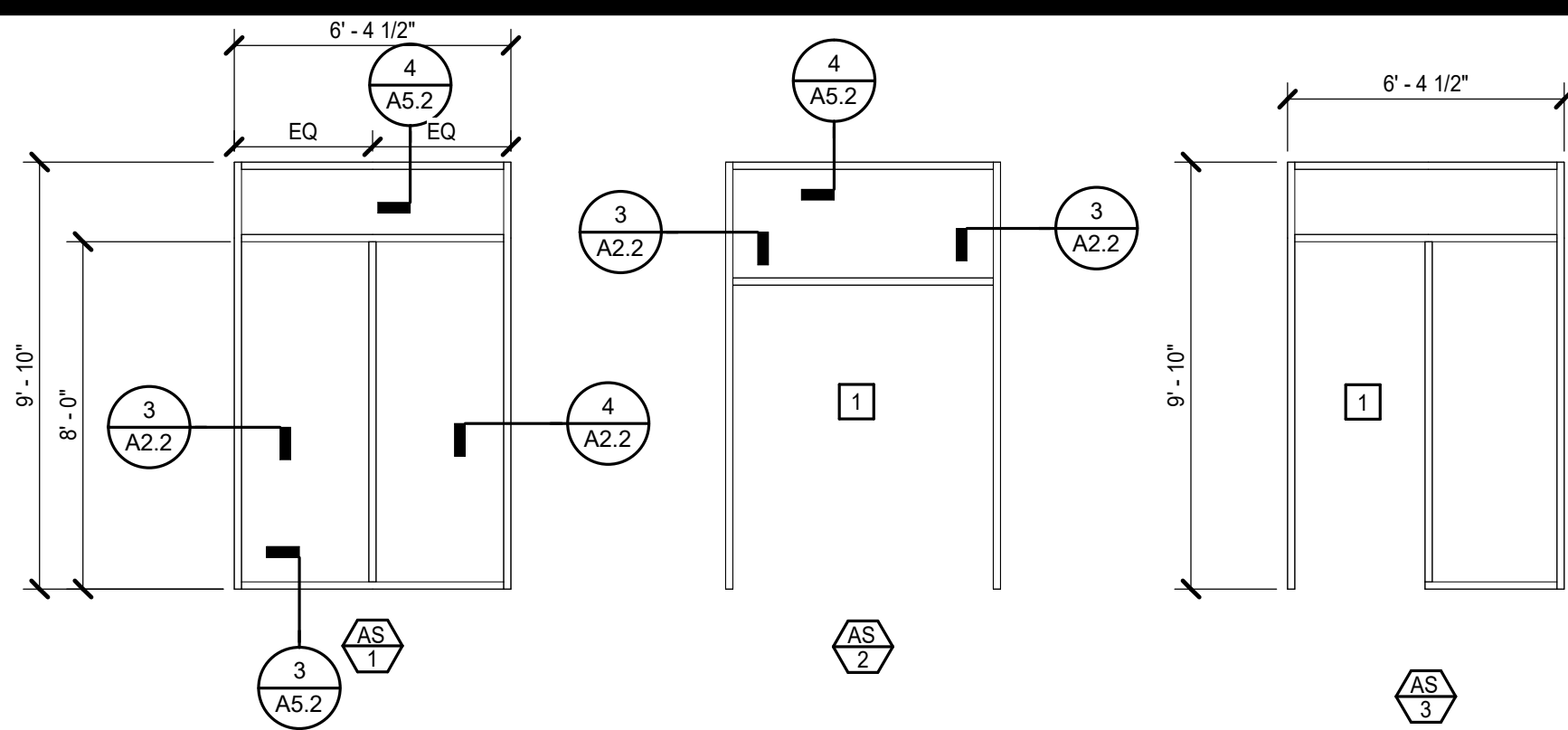
ADVANCED MANUFACTURING CENTER RENOVATIONS - AZALEA
WAYNE COMMUNITY COLLEGE
Goldsboro, North Carolina
Architect's Project No.: 593101.2
SCO Project No.: 16-15906-01C

- C. Fit border trim neatly against abutting surfaces.
- D. Install acoustical units level, in uniform plane, and free from twist, warp, and dents.
- E. Cutting Acoustical Units:
 - 1. Make field cut edges of same profile as factory edges.
- F. Where round obstructions and bullnose concrete block corners occur, provide preformed closures to match perimeter molding.

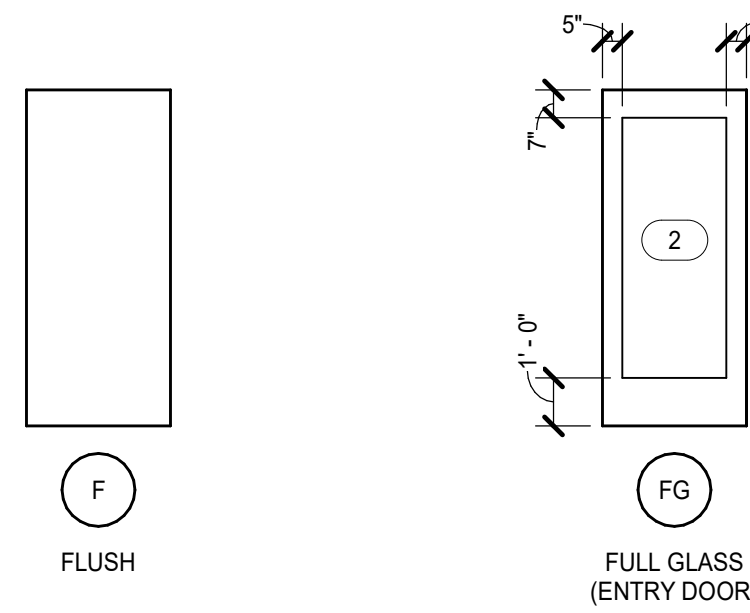
3.05 TOLERANCES

- A. Maximum Variation from Flat and Level Surface: 1/8 inch in 10 feet.
- B. Maximum Variation from Plumb of Grid Members Caused by Eccentric Loads: 2 degrees.

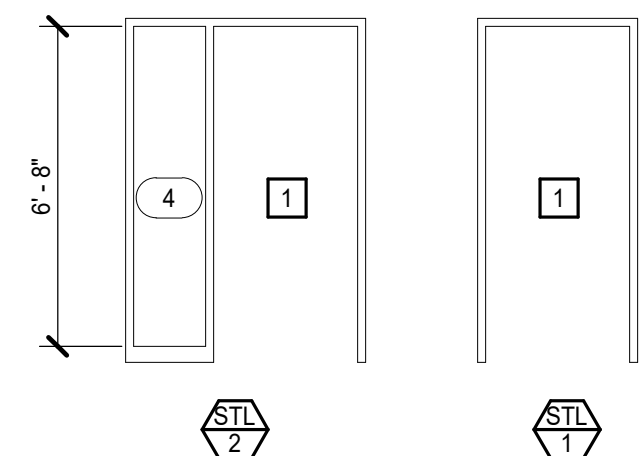
END OF SECTION 095100



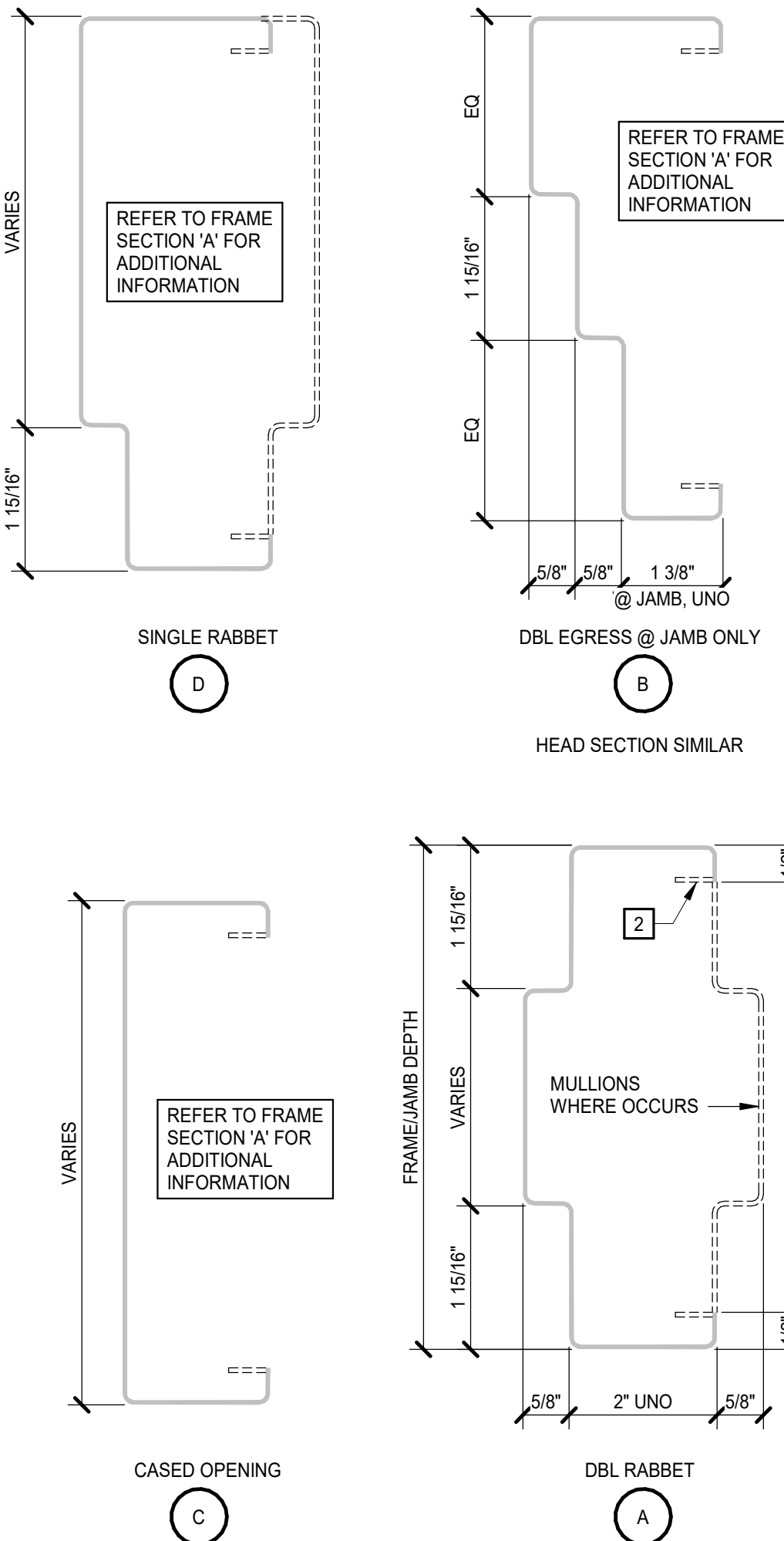
ALUMINUM STOREFRONT TYPES



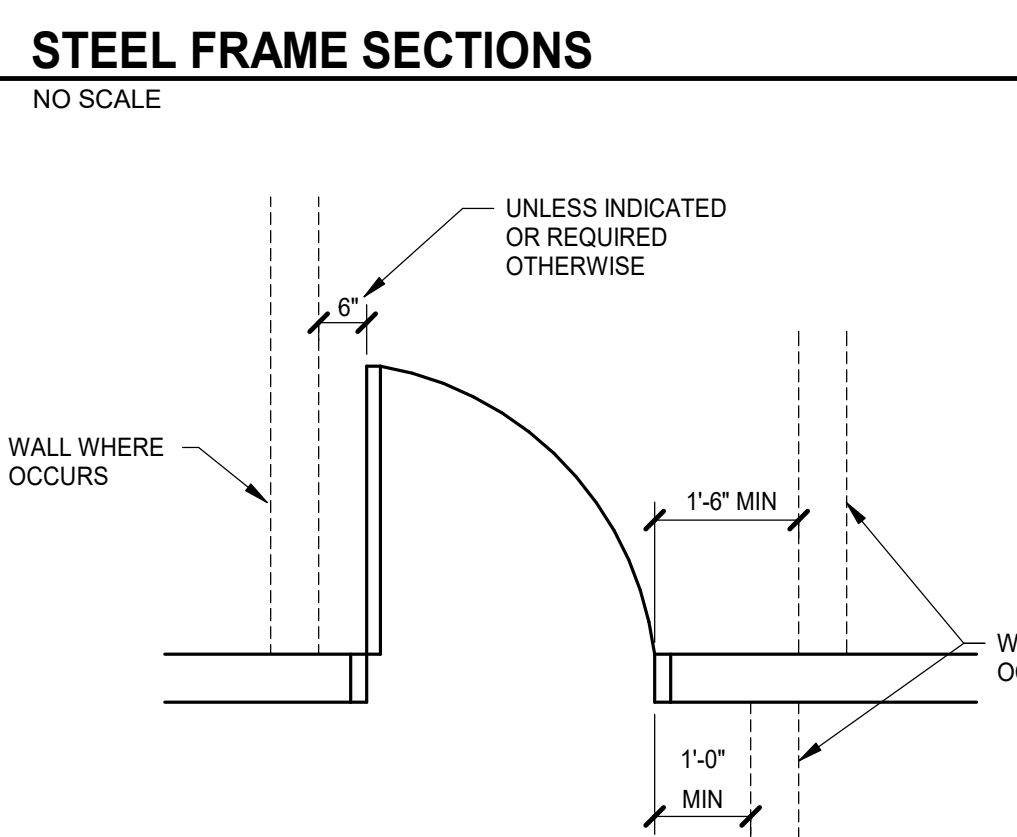
DOOR TYPES



STEEL FRAME TYPES



STEEL FRAME SECTIONS



MANEUVERING CLEARANCE AT DOORS

DOOR SCHEDULE														
NUMBER	DOOR TYPE	SIZE (NOMINAL)	MATERIAL	DOOR			FRAME				GLAZING	HWDR	FIRE RATING	NOTES
				LOUVER	UC	GLAZING TYPE	TYPE	SECTIONS	HEAD DETAIL	JAMB DETAIL				
100	FG	3'-0 1/2" x 1'-3 1/4"	ALUM			2	AS-2							
101	F	3'-0 1/2" x 1'-3 1/4"	WD				STL-1	A	9/A2.2	9/A2.2	9/A2.2		08	20 MIN
105	F	3'-0 1/2" x 1'-3 1/4"	WD				STL-1	A	9/A2.2	9/A2.2	9/A2.2		08	20 MIN
106	F	3'-0 1/2" x 1'-3 1/4"	WD				STL-1	A	9/A2.2	9/A2.2	9/A2.2		06	20 MIN
107	F	3'-0 1/2" x 1'-3 1/4"	WD				STL-1	A	9/A2.2	9/A2.2	9/A2.2		06	20 MIN
108	F	3'-0 1/2" x 1'-3 1/4"	WD				STL-1	A	9/A2.2	9/A2.2	9/A2.2		07	20 MIN
108A	F	3'-0 1/2" x 1'-3 1/4"	WD				STL-1	A	9/A2.2	9/A2.2	9/A2.2		03	20 MIN
109	F	3'-0 1/2" x 1'-3 1/4"	WD				STL-1	A	9/A2.2	9/A2.2	9/A2.2		04	20 MIN
110	F	3'-0 1/2" x 1'-3 1/4"	WD				STL-2	A	9/A2.2	9/A2.2	9/A2.2		05	20 MIN
111	F	3'-0 1/2" x 1'-3 1/4"	WD				STL-2	A	9/A2.2	9/A2.2	9/A2.2		05	20 MIN
112	F	3'-0 1/2" x 1'-3 1/4"	WD				STL-2	A	9/A2.2	9/A2.2	9/A2.2		05	20 MIN
113	F	3'-0 1/2" x 1'-3 1/4"	WD				STL-2	A	9/A2.2	9/A2.2	9/A2.2		05	20 MIN
118	F	3'-0 1/2" x 1'-3 1/4"	WD				STL-1	A	9/A2.2	9/A2.2	9/A2.2		02	20 MIN
119A	F	3'-0 1/2" x 1'-3 1/4"	WD				STL-1	A	9/A2.2	9/A2.2	9/A2.2		09	20 MIN
119B	F	3'-0 1/2" x 1'-3 1/4"	WD				STL-1	A	9/A2.2	9/A2.2	9/A2.2		09	20 MIN
120A	F	3'-0 1/2" x 1'-3 1/4"	WD				STL-1	A	9/A2.2	9/A2.2	9/A2.2		01	20 MIN
120B	F	3'-0 1/2" x 1'-3 1/4"	WD				STL-1	A	9/A2.2	9/A2.2	9/A2.2		08	20 MIN
121	F	3'-0 1/2" x 1'-3 1/4"	WD				STL-1	A	9/A2.2	9/A2.2	9/A2.2		05	20 MIN
122	F	3'-0 1/2" x 1'-3 1/4"	WD				STL-1	A	9/A2.2	9/A2.2	9/A2.2		05	20 MIN
123	F	3'-0 1/2" x 1'-3 1/4"	WD				STL-1	A	9/A2.2	9/A2.2	9/A2.2		08	20 MIN
128	F	3'-0 1/2" x 1'-3 1/4"	WD				STL-1	A	9/A2.2	9/A2.2	9/A2.2		08	20 MIN
128.1	FG	3'-0 1/2" x 1'-3 1/4"	ALUM				AS-3		4/A5.2	3/A2.2	4/A2.2		10	
129	F	3'-0 1/2" x 1'-3 1/4"	WD				STL-1	A	9/A2.2	9/A2.2	9/A2.2		06	20 MIN

GLAZING TYPES	
REPRESENTED BY (n)	
1.	1/4" CLEAR
2.	1" TINTED INSULATING
3.	NOT USED
4.	MINIMUM 20 MINUTE CLEAR RATED GLASS TESTED IN ACCORDANCE WITH NFPA 257 OR UL 9 AND IN ACCORDANCE WITH THE HOSE STREAM TEST 716.6

DOOR AND FRAME GENERAL NOTES

A. UNLESS INDICATED OTHERWISE, ALL DETAIL NUMBERS IN THE DOOR AND FRAME SCHEDULE FOR HEAD, JAMB AND SILL CONDITIONS REFER TO DRAWING A2.3

B. DOOR AND FRAME DETAILS INDICATE GENERAL CHARACTERISTICS OF DOOR AND FRAME SIZES AND COMPONENTS AND MAY NOT INDICATE EXACT FIELD CONDITIONS OR REQUIREMENTS. COORDINATE DETAILS WITH OTHER DRAWINGS AND SPECS TO DETERMINE ALL COMPONENTS (E.G. SEALANTS, ANCHORS, HARDWARE, LINTELS, CLIPS) REQUIRED FOR COMPLETE AND FUNCTIONAL INSTALLATION.

C. DOOR SWINGS ON FLOOR PLANS TAKE PRECEDENCE OVER SWINGS INDICATED ELSEWHERE (E.G. ELEVATIONS).

DOOR, FRAME AND GLAZING TYPE KEYNOTES	
REPRESENTED BY (n)	
APPLIES TO DRAWINGS A2.1	
1.	SIZE AS REQUIRED TO ACCOMMODATE DOOR, HARDWARE AND FRAME COMPONENTS
2.	BACKEND RETURN @ GB LOCATIONS ONLY.

GLAZING GENERAL NOTES

REFER TO GLAZING TYPE LEGEND AND NOTES

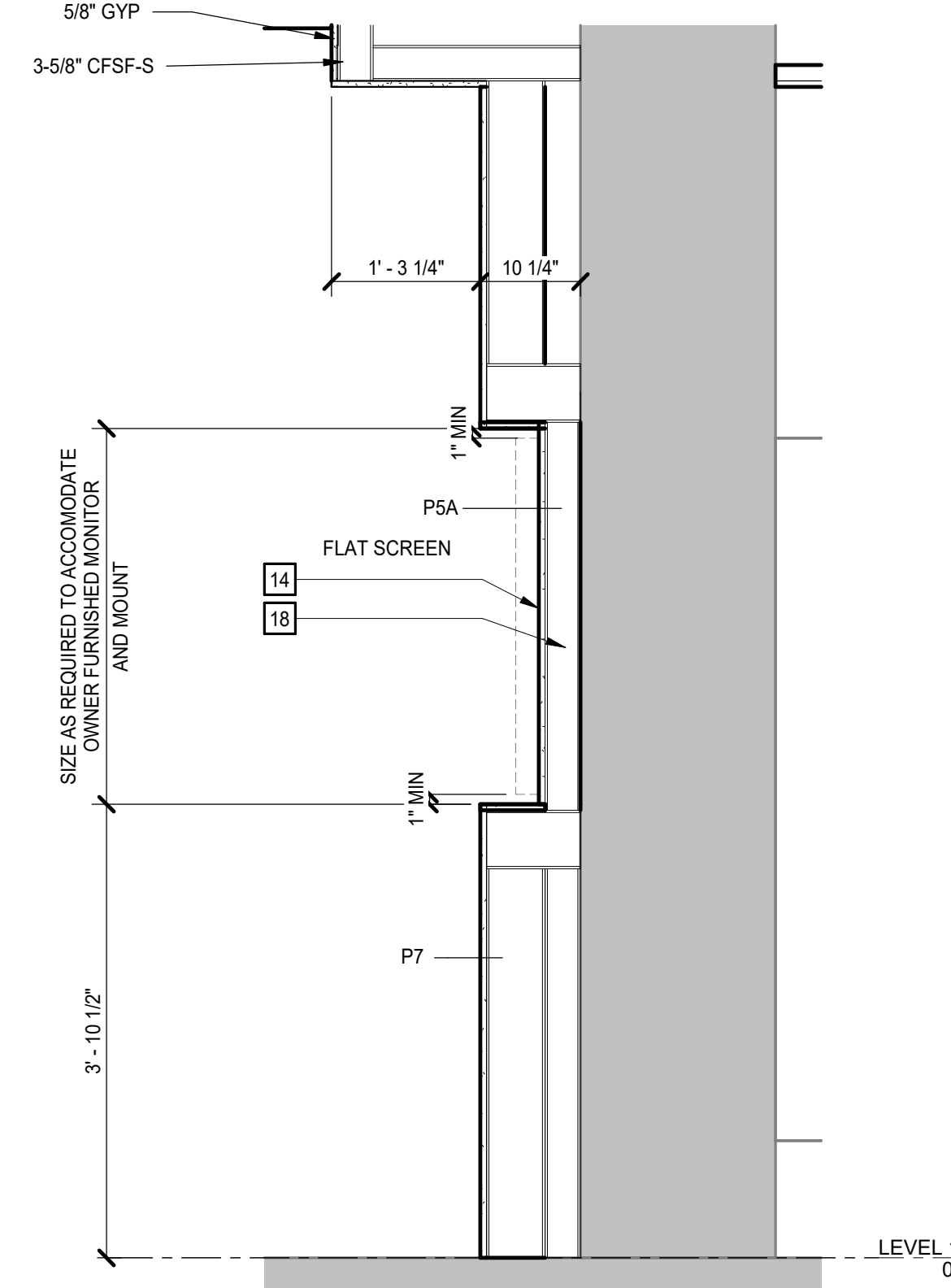
REFER TO DWG A2.2 FOR DETAILS

REFER TO KEYNOTE LEGEND

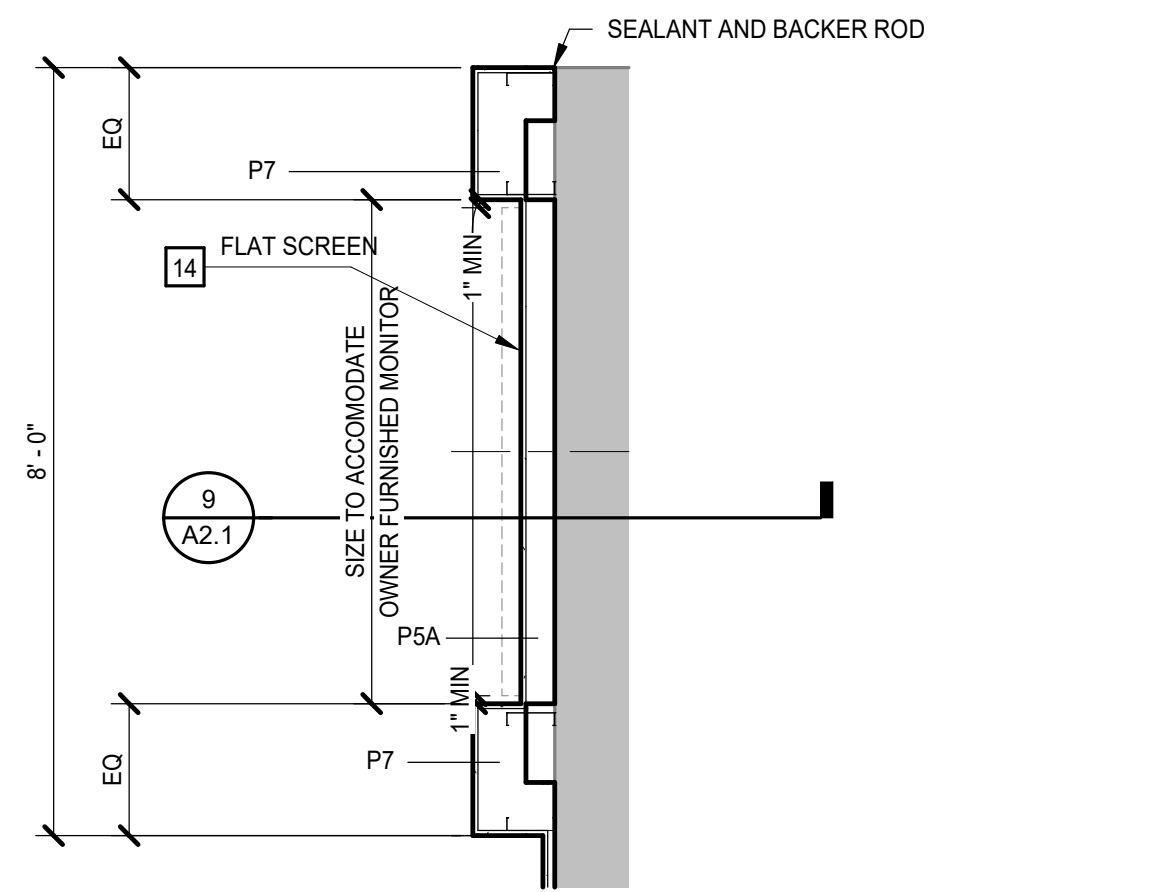
FLOOR PLAN KEYNOTES	
REPRESENTED BY (n)	
APPLIES TO DRAWINGS A2.1-A2.2	
1.	ALIGN FACE OF WALL
2.	BARRIER FREE ACCESSIBLE FILTERED FUME HOOD WITH ACID STORAGE BASE CABINETS
13.	FRY REGLET "J" TRIM - TERMINATION OF GYP
14.	NIC EQUIPMENT
15.	EXISTING EQUIPMENT PROVIDED BY OWNER
16.	PATCH OPENINGS FROM REMOVAL OF DUCT WITH CMU SIZED TO MATCH EXISTING WALL
17.	4X12 PROJECTOR RATED WHITE BOARD
18.	COORDINATE BLOCKING IN WALL FOR TV MOUNT

FLOOR PLAN GENERAL NOTES

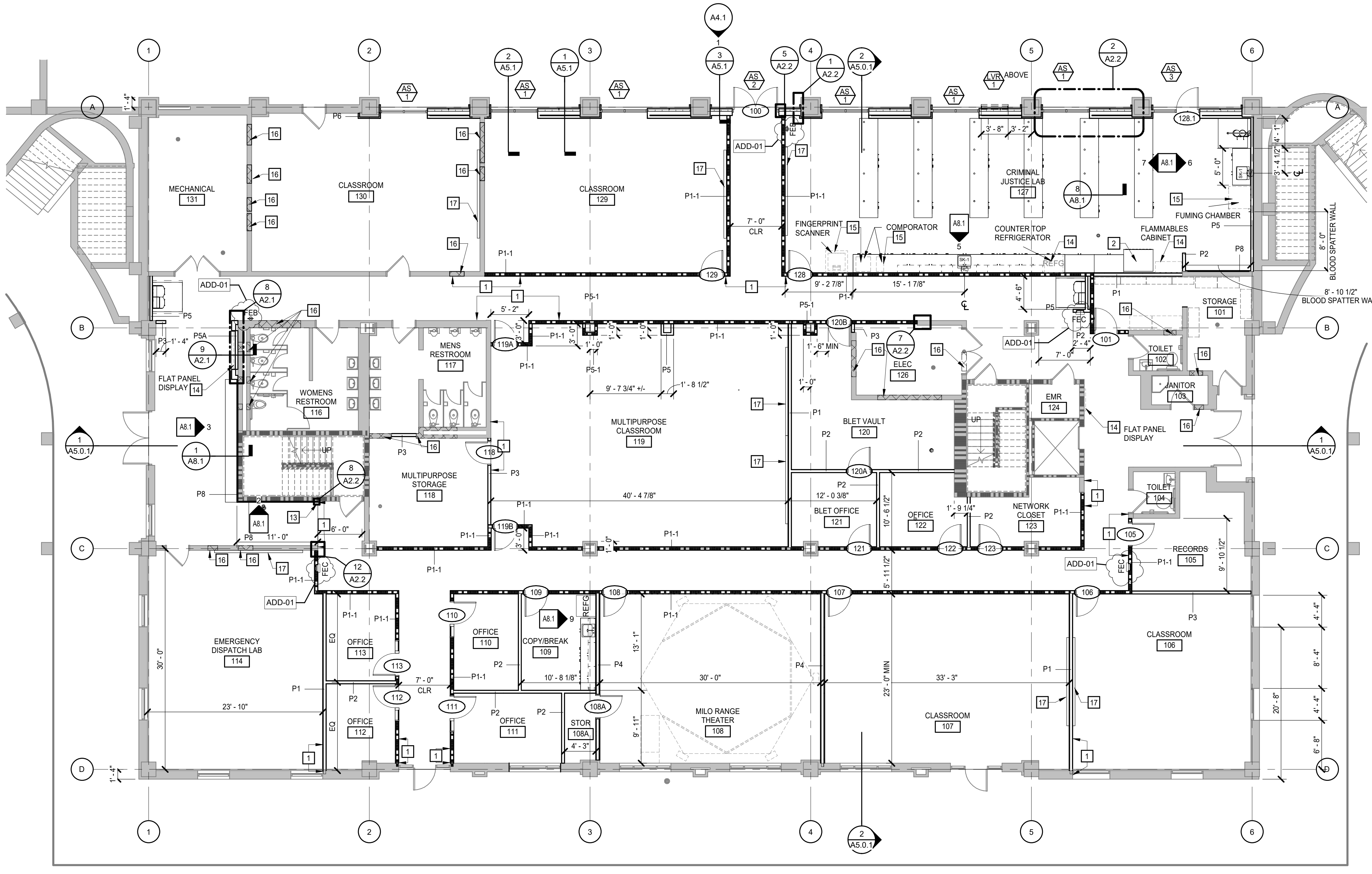
A. PROVIDE CMU INFILL IN EXISTING CMU WALLS WHERE OPENINGS OCCUR FROM REMOVED DUCTWORK AND UTILITIES.



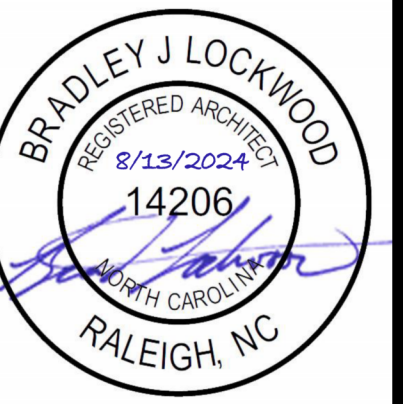
9 SECTION WALL RECESS



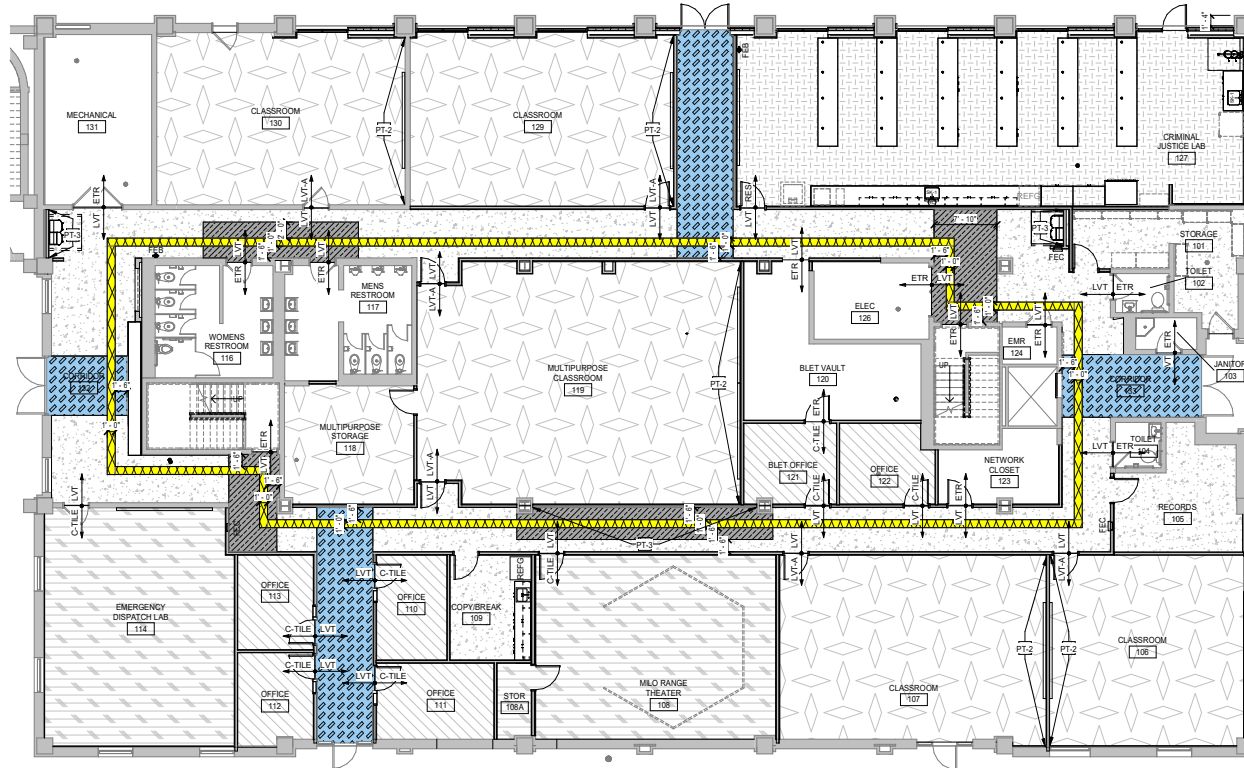
8 PLAN - WALL RECESS



FIRST FLOOR PLAN



PROJECT NO:	593101.2
DATE:	AUGUST 13, 2024
REVISIONS:	
DATE:	DESCRIPTION
11/19/2024	ADD-01



FIRST FLOOR FINISH PLAN
1/8" = 1'-0"

FINISH PLAN LEGEND	
	FLOOR FINISH TRANSITION, CHANGE OF MATERIAL
	WALL FINISH EXTENTS
	CORNER GUARD
	C-TILE A
	C-TILE B
	CONC. POL.
	CONC. SLR.
	ETR.
	RAF.
	LVT-A
	LVT-B1
	LVT-B2
	LVT-B3
	LVT-B4

*IND. HATCHES DO NOT INDICATE FLOOR INSTALLATION PATTERN, METHOD OR DIRECTION. HATCHES INDICATE START AND STOP OF FINISHES ONLY.

FINISH PLAN GENERAL NOTES

A. REFER TO A6.1 FOR ABBREVIATION LEGEND.
 B. WHERE ONE FINISH IS LISTED ON ALL WALLS OF THE ROOM, THE FINISH PLANS DO NOT SHOW EXTENT OF FINISH. FINISH PLANS AND ELEVATIONS SHOW EXTENT OF MATERIALS WHERE FINISH SCHEDULE LISTS MULTIPLE FINISHES IN ONE ROOM.
 C. DIRECTIONAL WALL FINISH INDICATORS (NORTH, SOUTH, EAST, WEST) REFER TO THE "PLAN" NORTH ORIENTATION.

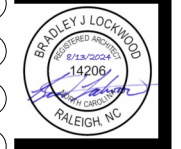
FINISH SCHEDULE GENERAL NOTES

A. FINISH SCHEDULE DESCRIBES ONLY THE BASIC OR PREDOMINANT SURFACE FINISH.
 B. PROVIDE SAME FINISHES AS THE ADJACENT SPACE IN ALCOVES AND CONTINUOUS SPACES WITHOUT DESIGNATED SPACE NUMBERS.
 C. CASEWORK FINISHES ARE NOT NOTED IN THE FINISH SCHEDULE. REFER TO CASEWORK ELEVATIONS AND SPECIFICATIONS FOR MATERIALS AND FINISHES.
 D. DIRECTIONAL WALL FINISH INDICATORS (NORTH, EAST, SOUTH, WEST) REFER TO THE "PLAN" NORTH ORIENTATION.
 E. BULKHEADS AND SOFFITS MAY NOT BE INDICATED IN FINISH SCHEDULES. REFER TO RCP DETAILS, AND OTHER DOCUMENTS FOR EXTENT.
 F. PROVIDE CONTINUOUS SEALANT BETWEEN INTERIOR SLAB-ON-GRADE AND VERTICAL ELEMENT WHERE JOINT IS NOT CONCEALED BY FINISH BASE OR OTHER CONSTRUCTION.
 G. REFER TO SPECIFICATIONS FOR INFORMATION ON FINISH FIRE CLASSIFICATION RATING.

FINISH SCHEDULE											
Room Finish Key	NUMBER	NAME	FLOOR	BASE	NORTH	EAST	SOUTH	WEST	CEILING	NOTES	
(none)	101	STORAGE	LVT-B1	RB	PT	PT	PT	PT	ACP-1		
ETR	102	TOLLET	ETR	ETR	ETR	ETR	ETR	ETR	ACP-1		
CORE	103	JANITOR	ETR	ETR	ETR	ETR	ETR	ETR	ETR		
ETR	104	TOLLET	ETR	ETR	ETR	ETR	ETR	ACP-1			
(none)	105	RECORDS	LVT-B1	RB	PT	PT	PT	PT	ACP-1		
CLASSRM	106	CLASSROOM	LVT-A	RB	PT	PT	PT	PT	ACP-1		
CLASSRM	107	CLASSROOM	LVT-A	RB	PT	PT	PT	PT	ACP-1		
(none)	108	MULO RANGE THEATER	C-TILE-A	RB	PT	PT	PT	PT	ACP-1		
(none)	108A	ETOR	C-TILE-A	RB	PT	PT	PT	PT	ACP-1		
(none)	109	COPI/BREAK	LVT-B1	RB	PT	PT	PT	PT	ACP-1		
office	110	OFFICE	C-TILE-B	RB	PT	PT	PT	PT	ACP-1		
office	111	OFFICE	C-TILE-B	RB	PT	PT	PT	PT	ACP-1		
office	112	OFFICE	C-TILE-B	RB	PT	PT	PT	PT	ACP-1		
office	113	OFFICE	C-TILE-B	RB	PT	PT	PT	PT	ACP-1		
(none)	114	EMERGENCY DISPATCH LAB	C-TILE-A	RB	PT	PT	PT	PT	ACP-1		
ETR	116	WOMENS RESTROOM	ETR	ETR	ETR	ETR	ETR	ETR	ACP-1		
ETR	117	MENS RESTROOM	ETR	ETR	ETR	ETR	ETR	ETR	ACP-1		
CLASSRM	118	MULTIPURPOSE STORAGE	LVT-A	RB	PT	PT	PT	PT	ACP-1		
CLASSRM	119	MULTIPURPOSE CLASSROOM	LVT-A	RB	PT	PT	PT	PT	ACP-1		
CORE	120	BLET VAULT	ETR	ETR	ETR	ETR	ETR	ETR	ETR		
office	121	BLET OFFICE	C-TILE-B	RB	PT	PT	PT	PT	ACP-1		
office	122	OFFICE	C-TILE-B	RB	PT	PT	PT	PT	ACP-1		
CORE	123	NETWORK CLOSET	ETR	ETR	ETR	ETR	ETR	ETR	ETR		
CORE	124	EMR	ETR	ETR	ETR	ETR	ETR	ETR	ETR		
CORE	126	ELEC	ETR	ETR	ETR	ETR	ETR	ETR	ETR		
(none)	127	CRIMINAL JUSTICE LAB	RSF	RSF-MS	ARC	ARC/RWC	ARC/RWC	ARC	ACP-2		
CLASSRM	129	CLASSROOM	LVT-A	RB	PT	PT	PT	PT	ACP-1		
CLASSRM	130	CLASSROOM	LVT-A	RB	PT	PT	PT	PT	ACP-1		
CLASSRM	131	MECHANICAL	ETR	ETR	ETR	ETR	ETR	ETR	ETR		
CORRIDOR	132	CORRIDOR	LVT-B	ARC	ARC	ARC	ARC	ARC	ACP-1	REFER TO FINISH PLAN FOR LAYOUT	
CORRIDOR	133	CORRIDOR	LVT-B	RB	ARC	ARC	ARC	ARC	ACP-1	REFER TO FINISH PLAN FOR LAYOUT	

INTERIOR FINISH LEGEND					
SPECIFICATION	DESCRIPTION	MATERIAL	MANUFACTURER	PRODUCT - COLOR	NOTES
04423	ARCHITECTURAL WOODWORK				
	EB-1	EDGE BAND (USE W/ PLAM)	CHARTER INDUSTRIES	T80	
	EB-2	EDGE BAND (USE W/ PLAM)	CHARTER INDUSTRIES	T80	
	PL-AM1	PLASTIC LAMINATE (CABINETS)	WILSONART	WHITE DRIF TWOOD 820K-16	
	SSM	SOLID SURFACE	WILSONART	NIGHT STARS 8155CS	
08146	FLUSH WOOD DOORS				
	WD	WOOD DOORS	LAMBTON	T80	
09100	CEILING				
	ACP-1	ACOUSTICAL CEILING PANEL	ARMSTRONG	FINE FISSURE HIGH NRC, SIZE: 24"x24", COLOR: WHITE	
	ACP-2	ACOUSTICAL CEILING PANEL	ARMSTRONG	ULTIMA HEALTHY ZONE - ITEM 1930	WASHABLE CEILING TILE
09613	RESILIENT BASE AND ACCESSORIES				
	IB	TRANSITION STRIP	TARKETT	T80	
	RB	RESILIENT BASE	TARKETT	T80	
	RSF	RUBBER SHEET FLOORING	ZANDUR	STYLE: S0PHROS; COLOR: CYGNUS SF6002	8" INTEGRAL BASE
09618	RESILIENT SHEET FLOORING				
	RSF	RUBBER SHEET FLOORING	ZANDUR	STYLE: S0PHROS; COLOR: CYGNUS SF6002	8" INTEGRAL BASE, HEAT WELD SEAMS
09619	RESILIENT TILE FLOORING				
	LVT-A	LUXURY VINYL FLOOR TILE	MILLIKEN	STYLE: RELIC; COLOR: HEIRLOOM	
	LVT-B1	LUXURY VINYL FLOOR TILE	MANNINGTON	STYLE: STRIDE; COLOR: BUZZY YELLOW C124	
	LVT-B2	LUXURY VINYL FLOOR TILE	MANNINGTON	STYLE: STRIDE; COLOR: MIDNIGHT TWINKLE C128	
	LVT-B3	LUXURY VINYL FLOOR TILE	MANNINGTON	STYLE: STRIDE; COLOR: LAVA ROCK C183	
	LVT-B4	LUXURY VINYL FLOOR TILE	MANNINGTON	STYLE: STRIDE; COLOR: MISTY MOUNTAIN C181	
09813	TILE CARPETING				
	C-TILE-A	CARPET TILE	EP CONTRACT	STYLE: SURFACE; COLOR: ASPECT SURSE	INSTALLATION - QUATER TURN
	C-TILE-B	CARPET TILE	TARKETT	STYLE: 2ND POWER II; COLOR: BALI BLUE T1616; SIZE: 24"x24"	
09720	WALL COVERING				
	WC-1	GRAPHIC WALL COVERING		TO BE PROVIDED BY WCC	
09733	PREFINISHED WOOD PANELS - INTERIOR				
	WP-1	MATCH EXISTING WOOD DOORS		MATCH EXISTING WOOD DOORS	
08430	SOUND ABSORBING WALL UNITS				
	AWP-1	ACOUSTICAL WALL PANEL	TURP	PATTERN: SLAT 54-3.3, NRC: 60	INSTALL HORIZONTALLY W/ Z-CLIPS
09100	PAINTING				
	PT-1	PAINT	PPG	FIELD PAINT	
	PT-2	PAINT	PPG	ACCENT BLUE PAINT	MATCH WAYNE COMMUNITY COLLEGE SCHOOL COLORS, PANTONE NUMBER TO BE PROVIDED BY WCC
	PT-3	PAINT	PPG	ACCENT YELLOW PAINT	MATCH WAYNE COMMUNITY COLLEGE SCHOOL COLORS, PANTONE NUMBER TO BE PROVIDED BY WCC
101400	SIGNAGE				
	MS-A	INTERIOR SIGNAGE - BACKGROUND	SCOTT SIGNS	SUNMETAL GRAY	
	MS-B	INTERIOR SIGNAGE - TEXT	SCOTT SIGNS	WHITE	
102600	WALL & DOOR PROTECTION				
	RWC	WALL PROTECTION	INPRO CORP	CONTINUUM RIGID SHEET, SIZE 4'X10'X.080"	CHEMICAL, STAIN AND MOLD RESISTANCE, FIBERGLASS FREE
	MS	HYGIENIC COVE BASE	INPRO CORP	PRODUCT #838-851-3394; SIZE: 6" LENGTH, FINISH: S.S	SEAL ALL SEAMS
	M6	INSIDE CORNER	INPRO CORP	PRODUCT # 61810; LENGTH 10'; COLOR MATCHING	FABRICATE PREFORMED CORNERS SHALL BE 90 DEGREE; SEAL ALL SEAMS
	M7	OUTSIDE CORNER	INPRO CORP	PRODUCT # 62010; LENGTH 10'; COLOR MATCHING	SEAL ALL SEAMS
	M8	VERTICAL DIVIDER BARS	INPRO CORP	PRODUCT # 61810; LENGTH 10'; COLOR MATCHING	SEAL ALL SEAMS

MOSELEY ARCHITECTS
 911 N. WEST STREET, SUITE 205 RALEIGH, NORTH CAROLINA 27603
 PHONE (919) 840-0901
 MOSELEYARCHITECTS.COM



ADVANCED MANUFACTURING CENTER RENOVATION - AZALEA
 WAYNE COMMUNITY COLLEGE
 SC0# 16-15906-01C
 3000 Wayne Memorial Dr, Goldsboro, NC 27534

PROJECT NO:	993101-2
DATE:	AUGUST 13, 2024
REVISIONS:	
DATE:	
DESCRIPTION:	
11/19/2024	ADD-01

FINISH PLAN,
 SCHEDULE AND
 LEGEND

A3.0.1

11/19/2024 11:05:09 AM

**AZALEA HALL
FIRST FLOOR**

OCCUPANCY	OCC LOAD	WATER CLOSETS				LAVATORIES				BATH TUBS/SHOWERS			DRINKING FOUNTAINS			SERVICE SINKS		
		MALE		FEMALE		MALE		FEMALE		FACTOR	REQ'D	PROVIDED	FACTOR	REQ'D	PROVIDED	REQ'D	PROVIDED	
		REQ'D	PROVIDED	REQ'D	PROVIDED	REQ'D	PROVIDED	REQ'D	PROVIDED									
B	317	30	1.00	30	1.00	40	2.00	40	0.98	0	0.00	0	0	0	100	3.17	1	1
NEW TOTAL	317	4	7	4	5	3	4	3	4	0	0	0	4	4	1	1		

PLUMBING FIXTURE CALCS

NOTE: THIS TABLE IS FOR THE FIRST FLOOR OF THE BUILDING ONLY AS THAT IS THE ONLY FLOOR WHERE THE OCCUPANT LOAD CHANGED ENOUGH TO REQUIRE A RECALCULATION AND POTENTIAL UPDATES PER THE EXISTING BUILDING CODE. EXISTING WATER CLOSETS, LAVS AND SERVICE SINKS MET THE CALCULATED REQUIREMENTS. THE TWO EXISTING DRINKING FOUNTAINS ON THIS LEVEL WERE NOT SUFFICIENT SO TWO ADDITIONAL FOUNTAINS WERE ADDED TO ACCOMODATE ADDITIONAL OCCUPANT LOAD OF THIS LEVEL. THE TWO SINGLE USER TOILETS ON THIS LEVEL WERE ASSIGNED 1 MALE AND 1 FEMALE IN THE COUNTS.

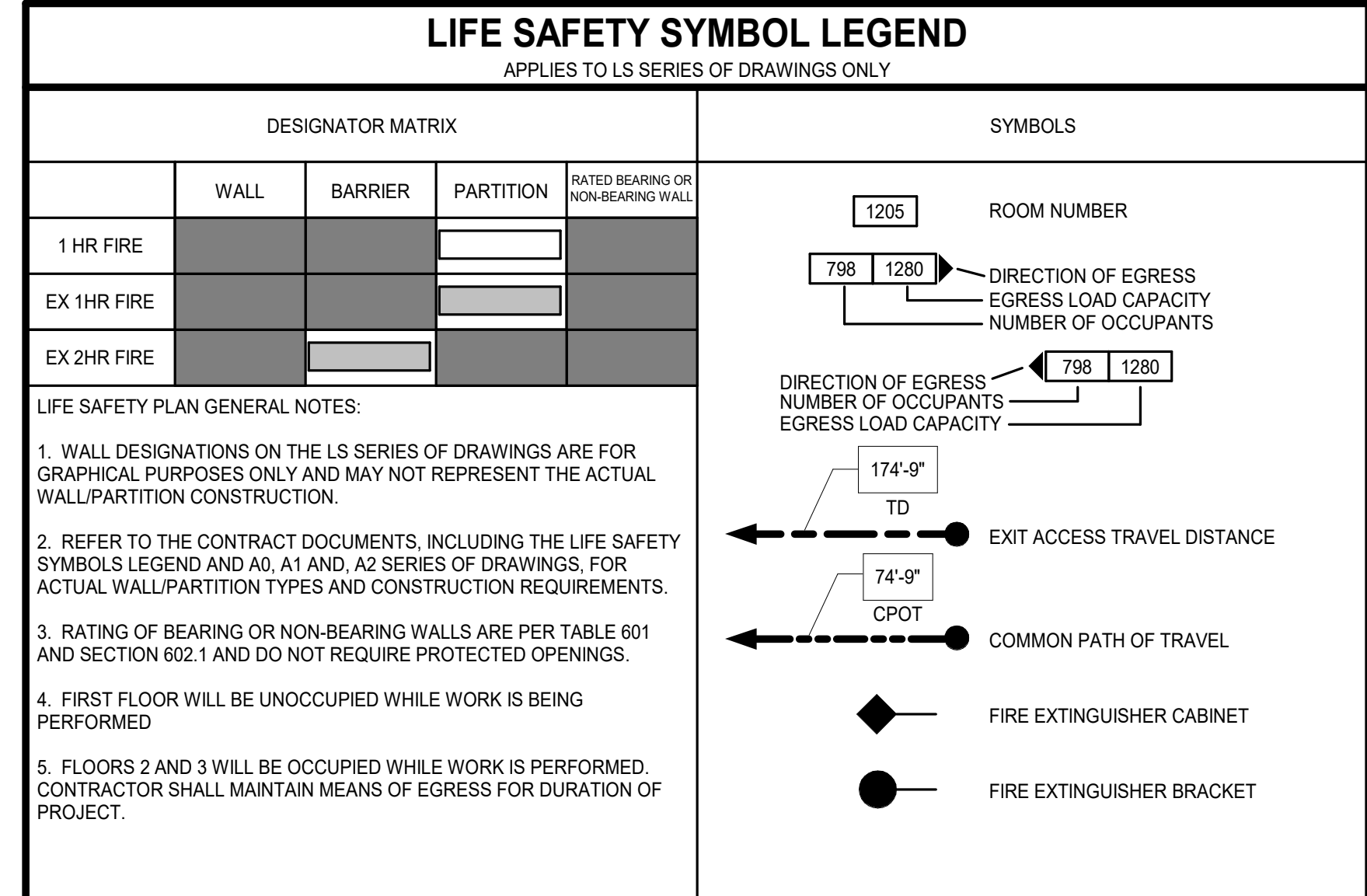
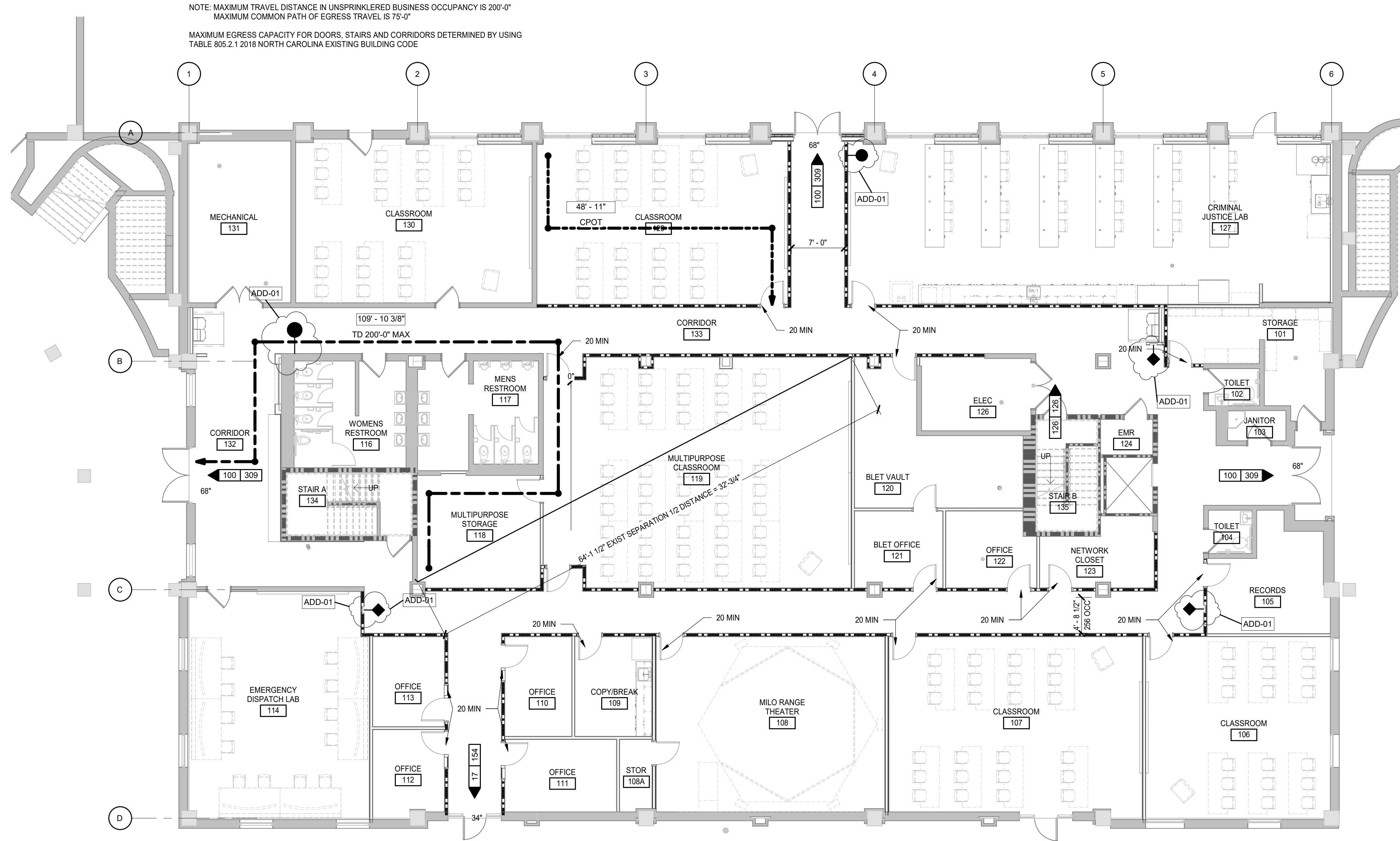
IT WAS ASSUMED THAT FIXTURE CALCULATIONS FOR THE OTHER LEVELS MET THE CODE UNDER WHICH THEY WERE PERMITTED. HOWEVER THE DESIGNER RAN THE NUMBERS FOR THE ENTIRE BUILDING WITH A TOTAL BUILDING B OCCUPANT LOAD OF 884.

MALE AND FEMALE WATER CLOSETS REQUIRED FOR ENTIRE BUILDING IS 10 MALE AND 10 FEMALE. MALE PROVIDED IN TOTAL IN THE BUILDING IS 15 AND FEMALE PROVIDED 13. THIS EXCEEDS WHAT IS REQUIRED.

LAVATORIES REQUIRED IN THE BUILDING IS 7 MALE AND 7 FEMALE. 8 MALE AND FEMALE LAVS ARE PROVIDED IN TOTAL THROUGHOUT THE BUILDING. THIS ALSO EXCEEDS THE REQUIRED NUMBER.

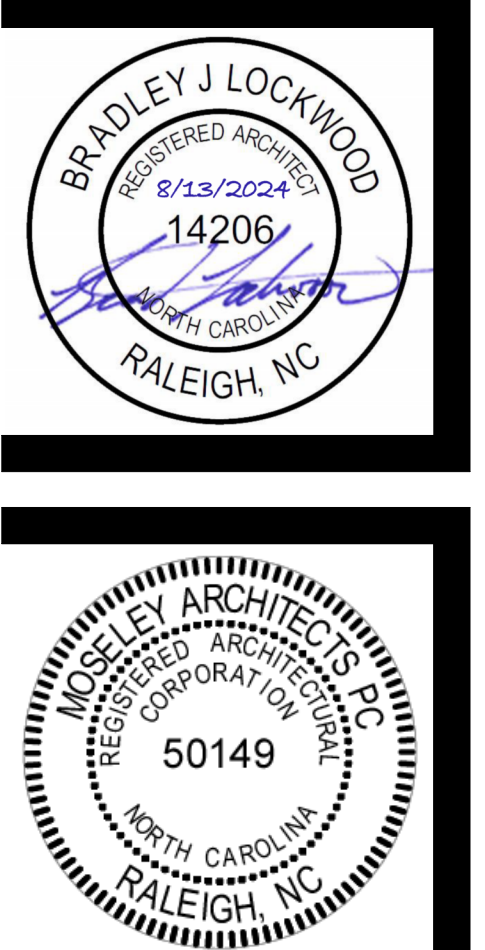
OCCUPANCY SCHEDULE

SPACE NUMBER	SPACE NAME	USE CLASSIFICATION	USED TO DETERMINE OCCUPANCY FACTOR ONLY	FLOOR AREA PER OCCUPANT		AREA		OCCUPANCY LOAD	
				SF	GROSS	NET	TABULAR	ACTUAL	DESIGN
101	STORAGE ROOM	B	ACCESSORY STORAGE & MECHANICAL EQUIPMENT ROOM	300 SF	212		1		1
102	TOILET	B	BUSINESS AREA	100 SF	32		1		1
103	JANITOR	B	ACCESSORY STORAGE & MECHANICAL EQUIPMENT ROOM	300 SF	31		1		1
104	TOILET	B	BUSINESS AREA	100 SF	32		1		1
105	RECORDS	B	ACCESSORY STORAGE & MECHANICAL EQUIPMENT ROOM	300 SF	196		1		1
106	CLASSROOM	B	EDUCATIONAL CLASSROOM	20 SF	581		30		30
107	CLASSROOM	B	EDUCATIONAL CLASSROOM	20 SF	768		39		39
108	MILORANGE THEATER	B	EDUCATIONAL SHOP & VOCATIONAL	50 SF	689		14		14
108A	STOR	B	ACCESSORY STORAGE & MECHANICAL EQUIPMENT ROOM	300 SF	39		1		1
109	COPY/BREAK	B	BUSINESS AREA	100 SF	132		2		2
110	OFFICE	B	BUSINESS AREA	100 SF	115		2		2
111	OFFICE	B	BUSINESS AREA	100 SF	139		2		2
112	OFFICE	B	BUSINESS AREA	100 SF	106		2		2
113	OFFICE	B	BUSINESS AREA	100 SF	111		2		2
114	EMERGENCY DISPATCH LAB	B	EDUCATIONAL SHOP & VOCATIONAL	50 SF	705		15		15
116	WOMENS RESTROOM	B	BUSINESS AREA	100 SF	203		3		3
117	MENS RESTROOM	B	BUSINESS AREA	100 SF	213		3		3
118	MULTIPURPOSE STORAGE	B	ACCESSORY STORAGE & MECHANICAL EQUIPMENT ROOM	300 SF	237		1		1
119	MULTIPURPOSE CLASSROOM	B	EDUCATIONAL CLASSROOM	20 SF	1163		60		60
120	BLET VAULT	B	ACCESSORY STORAGE & MECHANICAL EQUIPMENT ROOM	300 SF	291		1		1
121	BLET OFFICE	B	BUSINESS AREA	100 SF	115		2		2
122	OFFICE	B	BUSINESS AREA	100 SF	114		2		2
123	NETWORK CLOSET	B	ACCESSORY STORAGE & MECHANICAL EQUIPMENT ROOM	300 SF	118		1		1
124	EMR	B	ACCESSORY STORAGE & MECHANICAL EQUIPMENT ROOM	300 SF	32		1		1
126	ELEC	B	ACCESSORY STORAGE & MECHANICAL EQUIPMENT ROOM	300 SF	138		1		1
127	CRIMINAL JUSTICE LAB	B	EDUCATIONAL SHOP & VOCATIONAL	50 SF	1347		27		27
129	CLASSROOM	B	EDUCATIONAL CLASSROOM	20 SF	700		36		36
130	CLASSROOM	B	EDUCATIONAL CLASSROOM	20 SF	661		34		34
131	MECHANICAL	B	ACCESSORY STORAGE & MECHANICAL EQUIPMENT ROOM	300 SF	287		1		1
132	CORRIDOR	B	BUSINESS AREA	100 SF	509		6		6
133	CORRIDOR	B	BUSINESS AREA	100 SF	2047		21		21
134	STAIR A	B	BUSINESS AREAS	150 SF	134		1		1
135	STAIR B	B	BUSINESS AREA	100 SF	116		2		2
					12234				317



FIRE RATED ASSEMBLIES				
REPRESENTED BY (Xn)				
THE ASSEMBLIES REFERENCED ARE BASIS OF DESIGN. EQUIVALENT COMPATIBLE TESTED ASSEMBLIES WILL BE ACCEPTABLE IF APPROVED BY THE LAJH				
MARK	FIRE RATING	APPLIES TO	REFERENCE	REMARKS
X1	1 FP	GYPSON BOARD PARTITION	U419	
X2	1 FP	GYPSON BOARD PARTITION	V-488	
X3	1FP	HEAD OF GYPSON PARTITION PERPENDICULAR TO DECK FLUTES	HW-D-0025	EX FLOOR IS 3" STEEL DECK AND 3 1/4" CONG AND MEETS THE FLOOR REQUIREMENTS OF THIS ASSEMBLY
X4	1FP	HEAD OF GYPSON PARTITION PARALLEL TO DECK FLUTES	HW-D-0210	EX FLOOR IS 3" STEEL DECK AND 3 1/4" CONG AND MEETS THE FLOOR REQUIREMENTS OF THIS ASSEMBLY
X5	1FP	HEAD OF GYPSON PARTITION UNDER STEEL BEAM	HW-D-0259	CONDITION OCCURS ALONG GRIDLINE C. EX FLOOR IS 3" STEEL DECK AND 3 1/4" CONG AND MEETS THE FLOOR REQUIREMENTS OF THIS ASSEMBLY
X6	1FP	HEAD OF GYPSON PARTITION SLIGHTLY TO THE SIDE OF STEEL BEAM	HW-D-0582	CONDITION MAY OCCUR ALONG GRIDLINE B. EX FLOOR IS 3" STEEL DECK AND 3 1/4" CONG AND MEETS THE FLOOR REQUIREMENTS OF THIS ASSEMBLY

MOSELEY ARCHITECTS
911 N. WEST STREET, SUITE 205 RALEIGH, NORTH CAROLINA 27603
PHONE (919) 840-0091
MOSELEYARCHITECTS.COM



ADVANCED MANUFACTURING CENTER RENOVATION - AZALEA
WAYNE COMMUNITY COLLEGE
SCO# 16-15906-01C
3000 Wayne Memorial Dr, Goldsboro, NC 27534

PROJECT NO:	5931012
DATE:	AUGUST 13, 2024
REVISIONS	
DATE	DESCRIPTION
11/19/2024	ADD-01

LIFE SAFETY PLAN

LS1.1

11/19/2024 10:43:47 AM